

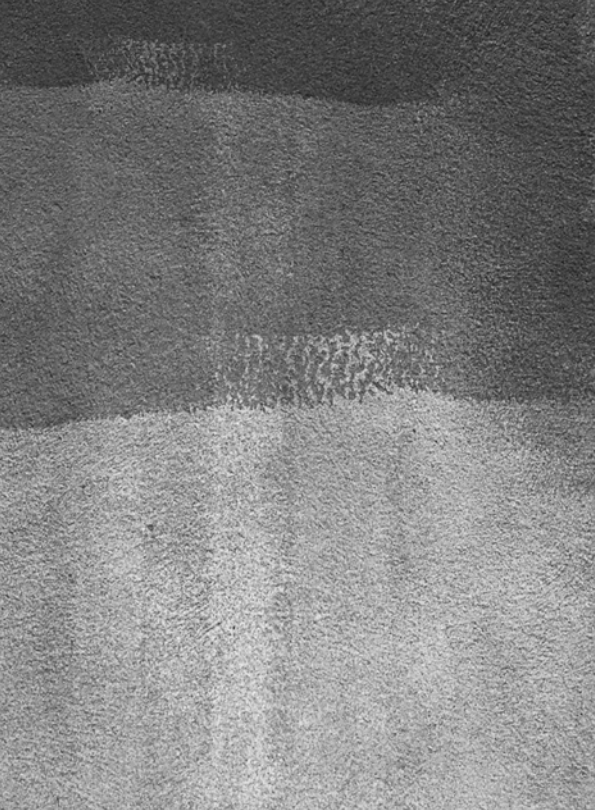


WORLD  
DISTRIBUTION

EN

PRODUCT CATALOGUE NO.34 2021





**ANY QUESTIONS? WRITE TO US**

247 Żmigrodzka Street,  
51-129 Wrocław, Poland  
[contact@distribution.fmworld.com](mailto:contact@distribution.fmworld.com)

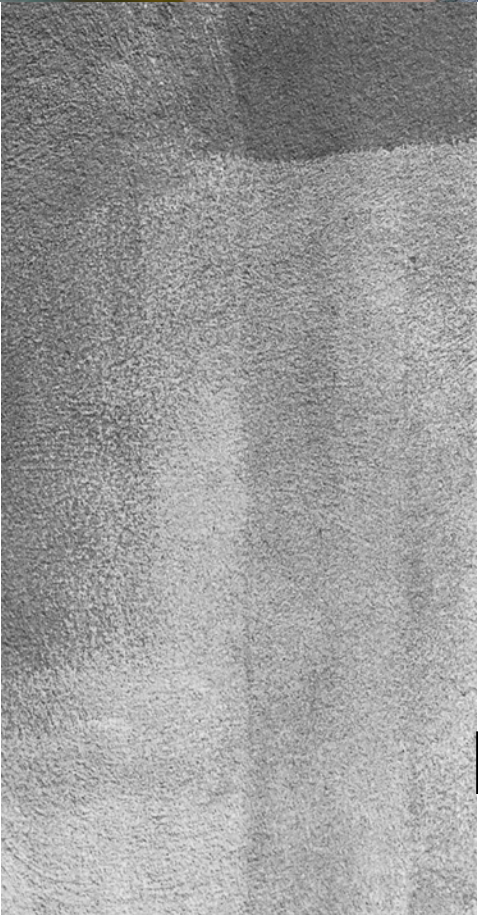
**Find us on Facebook:**  
[fb.com/FMWORLDDistribution](https://fb.com/FMWORLDDistribution)

**Visit our online shop:**  
[shop-global.fmworld.com](https://shop-global.fmworld.com)

[distribution.fmworld.com](https://distribution.fmworld.com)

# CONTENTS

PERFUMES	4-51
BODY CARE	52-87
MAKEUP	88-133
AURILE	134-145
PURE HOME	146-155
SMART & CLEAN	156-187
FRAGRANCES LIST	188-191





A woman with her eyes closed, wearing a large floral crown, lies on a bed of white and pink roses. Her arms are raised, and she has a serene expression. The background is a dense field of similar flowers.

FEDERICO MAHORA

Dazzle everyone  
with the magic of perfume

Smell is an extremely sensitive sense. Various scents take you back in your memories to wonderful places, exciting situations or people who were important to you. That is why perfume is so fascinating – you remember it for a long time. Wherever you go, you fill the space around you with it, and it stays there long after you are gone. That is why it should make you feel confident and exceptional. Go on a magic trip into the world of perfumes to find your unique fragrance.





## FLORAL

SENSUAL  
AND ROMANTIC

This is the most comprehensive family of fragrances. Floral compositions create fresh, ethereal and delicate bouquets. You can go ahead and experiment with scents and change them depending on the occasion. The romantic character of these perfumes was created to emphasise sensuality.

## ORIENTAL

STRONG  
AND UNTAMED

Fragrances associated with Far East countries, reminiscent of exotic trips, mysterious places and intriguing situations. These are compositions with warm and exotic tones. Both sweet and smoky notes appear in them. They are perfect for autumn and winter days and special occasions.

## FOUGERE

SEDUCTIVE  
AND CLASSIC

An exceptionally intriguing family of fragrances, dominated by forest, grass and herbal accords. Its name comes from French and means fern. Designed for those who appreciate the classics and value traditional beauty canons. Compositions, which represent professionalism and emphasise the style of a mature man.

## CHYPRE

SENSUAL  
AND TEMPTING

This family is dominated by bold, strong and chic compositions. They evoke the smell of silk scarves and elegant gloves. Woody and herbal-earth notes pulsating in perfumes give them a clear and fresh aroma that attracts attention and adds confidence. Suitable for people with a strong character; intriguing and sensual.

## CITRUS

JOYFUL  
AND ENERGETIC

Juicy fruits form an extremely refreshing citrus group provide a refreshing sensation and an amazing boost of energy. They emphasise your temperament, sociable and cheerful nature, and put you in a good mood. Perfect for people who enjoy life to the fullest.

## WOODY

SOPHISTICATED  
AND CLASSY

Warm and deep notes combined with refined accords create an elegant and sophisticated group of fragrances. Many of them were used to create perfume in ancient times. They stand out with a resin, forest aroma. These moody, mysterious and noble compositions add faith to your abilities.





## PURE ROYAL 500

### Perfume

#### WOODY

sophisticated and classy

#### WITH A CITRUS NOTE

##### Type:

- monumental, but bright

##### Fragrance notes:

- Head: angelica, saffron, lime, galbanum, lime peel, mandarin
- Heart: jasmine, heliotropium, myrrh, carrot, iris
- Base: sandalwood, vanilla, labdanum, oakmoss, leather, Haitian vetiver, musk

50 ml | Fragrance: 20%

170500 |



#### RICH STRUCTURE

The rich structure of PURE ROYAL 500 perfume, seemingly heterogenous and contrasting, creates a surprisingly coherent history. It starts with the fresh and bright tones of citrus notes and galbanum, accompanied by distinctive angelica and saffron. Next comes the heart of this fragrance – a flower bouquet with a hint of myrrh. At the end, it takes on its final character, showing its true majesty owed to organic-wood accords.



NEW

FOUGERE

seductive and classic

WITH A LAVENDER NOTE

**PURE ROYAL 933**  
170933 |  
**Type:**  
surprising, extravagant  
**Fragrance notes:**  
Head: coriander, grapefruit, lemon,  
absinthe, juniper berry  
Heart: cashmeran, lavender, jasmine, sage  
Base: sandalwood, moss, dry wood, musk,  
Virginian juniper

WITH A CHYPRE NOTE

**PURE ROYAL 973**  
170973 |  
**Type:**  
herbal, defined  
**Fragrance notes:**  
Head: caramel, tobacco, red berries,  
orange  
Heart: tuberose, lily, orchid  
Base: vanilla, patchouli

WOODY

sophisticated and classy

WITH A FRUITY NOTE

**PURE ROYAL 977**  
170977 |  
**Type:**  
energetic, combative  
**Fragrance notes:**  
Head: apple, plum, pineapple, lime, lemon,  
bergamot, mandarin  
Heart: rose, jasmine, lily of the valley,  
orchid, iris, gardenia  
Base: tonka bean, sandalwood,  
cedarwood, patchouli, white musk,  
ambergris

FLORAL

sensual and romantic

WITH A GOURMAND NOTE

**PURE ROYAL 934**  
170934 |  
**Type:**  
delicate, addictive  
**Fragrance notes:**  
Head: honey, orange, cherry  
Heart: jasmine, rose, orange tree, lily of  
the valley, clove  
Base: sandalwood, cypress, coconut,  
caramel, cedarwood, peach skin, musk

**PURE ROYAL 975**  
170975 |  
**Type:**  
flirtatious, delicious  
**Fragrance notes:**  
Head: bergamot, orange, grape  
Heart: jasmine, freesia, cardamom,  
magnolia, saffron, pink pepper, rose  
essence  
Base: patchouli, tonka bean, oak moss,  
cedarwood, peach skin, amber, musk,  
sugar

WITH A CHYPRE NOTE

**PURE ROYAL 970**  
170970 |  
**Type:**  
silky, classic  
**Fragrance notes:**  
Head: ylang-ylang, green notes, rose,  
fruity notes  
Heart: heliotrope, peach blossom, light  
wood  
Base: violet, woody and amber notes,  
musk

**PURE ROYAL 971**  
170971 |  
**Type:**  
sophisticated, sensual  
**Fragrance notes:**  
Head: pepper, coriander, rhubarb  
Heart: gardenia, tuberose, jasmine, clove,  
lily of the valley  
Base: ambergris, vetiver, leather

**PURE ROYAL 976**  
170976 |  
**Type:**  
fresh, expressive  
**Fragrance notes:**  
Head: apricot, mandarin, orange  
Heart: jasmine, neroli, orange blossom  
Base: musk, patchouli, vanilla

WITH AN ORIENTAL NOTE

**PURE ROYAL 979**  
170979 |  
**Type:**  
sensual, bold  
**Fragrance notes:**  
Head: almond  
Heart: tuberose, rose, ambrette seed  
Base: vanilla, iris, musk

ORIENTAL

strong and untamed

WITH A FRUITY NOTE

**PURE ROYAL 972**  
170972 |  
**Type:**  
exotic, inviting  
**Fragrance notes:**  
Head: raspberry, passionfruit, pineapple,  
blackcurrant  
Heart: peach blossom, lily of the valley,  
peony  
Base: vanilla, drifting amber, cedarwood,  
patchouli, musk

WITH A WOODY NOTE

**PURE ROYAL 974**  
170974 |  
**Type:**  
severe, uncompromising  
**Fragrance notes:**  
Head: mandarin  
Heart: geranium, rose  
Base: oud, leather, patchouli, musk



PURE ROYAL  
Perfume

50 ml | Fragrance: 20%



FLORAL

sensual and romantic

WITH A CHYPRE NOTE

PURE ROYAL 908  
170908 |

Type:  
elegant, fresh as a garden in the morning

Fragrance notes:  
Head: bergamot, coriander, plum  
Heart: jasmine, rose, peony, suede  
Base: patchouli, ambrette seeds, moss, amber

WITH AN ORIENTAL NOTE

PURE ROYAL 909  
170909 |

Type:  
fresh, with an edgy element

Fragrance notes:  
Head: bergamot, mandarin, honey, rum  
Heart: orchid, magnolia, jasmine, rose, orange blossom, heliotrope  
Base: sandalwood, citrus, myrrh, Peru balsam, leather, vanilla

PURE ROYAL 915  
170915 |

Type:  
juicy, sweet, airy

Fragrance notes:  
Head: hyacinth, clove  
Heart: lily of the valley, jasmine, wild rose  
Base: white amber, musk

PURE ROYAL 922  
170922 |

Type:  
unobvious, deep

Fragrance notes:  
Head: orange flower, leafy notes, clove  
Heart: ylang-ylang, jasmine, rose  
Base: cedar wood, musk, amber

WITH A WOODY NOTE

PURE ROYAL 918  
170918 |

Type:  
bright, fresh

Fragrance notes:  
Head: rhubarb, peach leaf  
Heart: violet, rose  
Base: light wood, musk

WITH A CITRUS NOTE

PURE ROYAL 921  
170921 |

Type:  
dazzling, energising

Fragrance notes:  
Head: mandarin, calamondin, orange  
Heart: hibiscus, lotus flower, orange flower, jasmine  
Base: vanilla, cistus, cedar wood, honey

WITH A FRUITY NOTE

PURE ROYAL 929  
170929 |

Type:  
warm, joyous, tempting

Fragrance notes:  
Head: peony, apple, fruity notes, citrus notes  
Heart: Damascus Rose, dianthus, jasmine  
Base: white musk, amber, moss, leather

CITRUS

joyful and energetic

WITH A CHYPRE NOTE

PURE ROYAL 902  
170902 |

Type:  
fresh, bright, energising

Fragrance notes:  
Head: mandarin, bergamot, lemon  
Heart: petitgrain, orange blossom, pepper  
Base: cedarwood, musk, moss

WITH A FRUITY NOTE

PURE ROYAL 903  
170903 |

Type:  
energising, positive

Fragrance notes:  
Head: mandarin, bergamot, lemon, petitgrain, rosemary  
Heart: neroli, orange blossom, jasmine  
Base: cedarwood, musk, peach

WITH A LIME NOTE

PURE ROYAL 911  
170911 |

Type:  
positive, captivating with a hint of lime

Fragrance notes:  
Head: grapefruit, bergamot, lime, basil, lemon  
Heart: thyme, lilac, jasmine, iris  
Base: vetiver, patchouli, cedarwood, labdanum, musk

WITH A FLORAL NOTE

PURE ROYAL 914  
170914 |

Type:  
refreshing, sparkling, sweet

Fragrance notes:  
Head: bergamot, green notes, salty notes  
Heart: sage, fruity notes, floral notes  
Base: woody notes, amber, musk

WITH AN ORANGE NOTE

PURE ROYAL 917  
170917 |

Type:  
serious with a radiant accent

Fragrance notes:  
Head: orange, mandarin, sage  
Heart: jasmine, orange flower  
Base: honey, sunny notes

ORIENTAL

strong and untamed

WITH A WOODY NOTE

PURE ROYAL 904  
170904 |

Type:  
rebellious, bold, brisk

Fragrance notes:  
Head: cumin, cardamom, cyclamen  
Heart: incense, iris, earthy notes  
Base: musk, leather, sandalwood

PURE ROYAL 905  
170905 |

Type:  
balancing between the sacred and the profane

Fragrance notes:  
Head: plum, raspberry, rhubarb, pomegranate, clove  
Heart: pink pepper, jasmine, opoponax, patchouli, lily  
Base: guaiac wood, cedarwood, amberwood, incense, vanilla

WITH A SPICY NOTE

PURE ROYAL 906  
170906 |

Type:  
passionate, sensual

Fragrance notes:  
Head: bergamot, nectarine, ginger  
Heart: jasmine, carnation, cinnamon leaves, rosemary, heliotrope  
Base: vanilla, tonka bean, cedarwood, tobacco, patchouli

WITH A GOURMAND NOTE

PURE ROYAL 923  
170923 |

Type:  
charming, attractive, disarming

Fragrance notes:  
Head: citrus notes, spicy notes, cinnamon, clove, ginger, cardamom, fruity notes  
Heart: woody notes, floral notes  
Base: amber, musk, powdery notes

PURE ROYAL 930  
170930 |

Type:  
appetising, sweet and savoury

Fragrance notes:  
Head: oud, sweet notes, honey  
Heart: Damask rose, clove  
Base: moss, amber, patchouli

WITH A CHYPRE NOTE

PURE ROYAL 925  
170925 |

Type:  
business, modern

Fragrance notes:  
Head: grapefruit, sage, neroli  
Heart: nutmeg, lily, spicy notes  
Base: oakmoss, amber, cedar wood, white musk

PURE ROYAL 926  
170926 |

Type:  
mature, defined

Fragrance notes:  
Head: saffron, thyme, raspberry  
Heart: jasmine, incense, cedar wood, vanilla  
Base: woody notes, amber, leather, moss

WITH A FOUGERE NOTE

PURE ROYAL 927  
170927 |

Type:  
mature, uncompromising

Fragrance notes:  
Head: pink berries, bergamot, verbena, cumin  
Heart: pepper, iris, rose, nutmeg  
Base: patchouli, vanilla, amber, animal notes



PURE ROYAL  
Perfume

50 ml | Fragrance: 20%

WITH A FLORAL NOTE

PURE ROYAL 913  
170913 |

Type:  
warm, sweet, inviting

Fragrance notes:  
Head: pink pepper, bergamot, orange, pistachio  
Heart: coconut, ylang-ylang, jasmine, tuberose  
Base: benzoin resin, tonka bean, vanilla, amber

PURE ROYAL 920  
170920 |

Type:  
untamed, surprising

Fragrance notes:  
Head: pink pepper, incense, rose  
Heart: leather, red fruit, saffron  
Base: peach, oud, amber



## CHYPRE

sensual and tempting

### WITH A SPICY NOTE

**PURE ROYAL 901**  
170901 |

**Type:**  
classic, balanced, elegant

**Fragrance notes:**  
Head: mandarin, wormwood, juniper  
Heart: cardamom, ginger, lavender  
Base: cedarwood, amber, patchouli

### WITH A FLORAL NOTE

**PURE ROYAL 912**  
170912 |

**Type:**  
urban, modern, combative

**Fragrance notes:**  
Head: bergamot, lemon, pepper, petitgrain  
Heart: neroli, orange blossom, basil  
Base: musk, vetiver

### WITH A FRUITY NOTE

**PURE ROYAL 916**  
170916 |

**Type:**  
mysterious, intriguing

**Fragrance notes:**  
Head: bergamot, basil, mint  
Heart: freesia, pear, rose  
Base: musk, patchouli, sandalwood

## WOODY

sophisticated and classy

### WITH A FRUITY NOTE

**PURE ROYAL 900**  
170900 |

**Type:**  
fascinating, unique, charming cherry scent

**Fragrance notes:**  
Head: black cherry, cherry liqueur, bitter almonds  
Heart: rose, jasmine, sour cherry  
Base: tonka bean, sandalwood, vetiver, cedarwood

### WITH A CITRUS NOTE

**PURE ROYAL 907**  
170907 |

**Type:**  
fresh, elusive

**Fragrance notes:**  
Head: yellow mandarin, lemon, pineapple, bergamot, wallflower, cardamom, pink pepper  
Heart: jasmine, lily of the valley, black pepper, iris, ozonic notes  
Base: dry wood, white musk, warm notes, powdery notes, vetiver, cedarwood

### WITH A GOURMAND NOTE

**PURE ROYAL 910**  
170910 |

**Type:**  
dry, scented with a hint of sweetness

**Fragrance notes:**  
Head: jasmine, saffron  
Heart: balsam fir, cedarwood  
Base: cashmere wood, ambergris, moss, brown sugar

### WITH A FLORAL NOTE

**PURE ROYAL 924**  
170924 |

**Type:**  
casual, transparent, friendly

**Fragrance notes:**  
Head: mandarin, neroli, saffron, cardamom, nutmeg  
Heart: Damascus Rose, jasmine, orange flower, floral notes, cedar wood  
Base: amber, sweet wood, sandalwood, vanilla, milk

### WITH A FOUGERE NOTE

**PURE ROYAL 931**  
170931 |

**Type:**  
primal, untamed

**Fragrance notes:**  
Head: pink berries, white forest, rose  
Heart: iris, saffron, leather, amber wood  
Base: vanilla, white moss, dry wood, musk

### WITH AN ORIENTAL NOTE

**PURE ROYAL 932**  
170932 |

**Type:**  
relaxing, charming

**Fragrance notes:**  
Head: vanilla, coumarin, amber wood, musk  
Heart: mugwort, mint, light wood  
Base: cardamom, lavender, fresh flowers



# PURE ROYAL

## Perfume

50 ml | Fragrance: 20%

## FOUGERE

seductive and classic

### WITH A LAVENDER NOTE

**PURE ROYAL 919**  
170919 |

**Type:**  
dignified, expressive, bright

**Fragrance notes:**  
Head: lime, basil, lemon  
Heart: jasmine, lavender, white tea  
Base: oakmoss, vetiver, musk, ambergris

### WITH A GREEN NOTE

**PURE ROYAL 928**  
170928 |

**Type:**  
astounding with the scent of blackberry bush

**Fragrance notes:**  
Head: blackberry, blackcurrant, peach, lemon, green notes  
Heart: cyclamen, white flowers, sweet notes  
Base: sandalwood, amber, moss



COMING  
SOON

NEW

FLORAL

sensual and romantic

WITH A FRUITY NOTE

PURE ROYAL 841  
170841 |

Type:  
balanced, clearly rose

Fragrance notes:  
Head: bergamot, lychee, pear leaves  
Heart: rose, magnolia, violet  
Base: plum, musk

PURE ROYAL 845  
170845 |

Type:  
light, dazzling

Fragrance notes:  
Head: peach, bergamot, rhubarb, elemi resin, pear, pineapple, Osmanthus, blackcurrant, lemon, fig, sweet orange  
Heart: violet, ylang-ylang, iris, magnolia, rose, lily of the valley, ozonic notes, jasmine, sage, black tea, orange blossom, geranium, American mint  
Base: sandalwood, white musk, cedarwood, benzoin resin, vetiver, cashmeran, patchouli, cypriol, gourmand notes

PURE ROYAL 847  
170847 |

Type:  
friendly, serene

Fragrance notes:  
Head: mandarin, ylang-ylang, pear, red fruits  
Heart: jasmine sambac, apricot, cedarwood, orange blossom  
Base: vanilla, tuberose, amber, musk

PURE ROYAL Perfume  
50 ml | Fragrance: 20%

WITH A GOURMAND NOTE

PURE ROYAL 842  
170842 |

Type:  
appetising, warm

Fragrance notes:  
Head: peach, bergamot, rhubarb, ginger, pear, pineapple, blackcurrant, coconut, apple, mandarin  
Heart: jasmine, freesia, rose, lily of the valley, gardenia, green notes, orange blossom  
Base: vanilla, cedarwood, tonka bean, ambergris, sandalwood, musk

PURE ROYAL 846  
170846 |

Type:  
charming but edgy

Fragrance notes:  
Head: mandarin, pear, red fruits  
Heart: jasmine, orange blossom, white pepper  
Base: caramel, milky notes, amber, musk

WITH A CHYPRE NOTE

PURE ROYAL 848  
170848 |

Type:  
stylish, modern

Fragrance notes:  
Head: mandarin, bergamot, pear  
Heart: jasmine, rose, geranium  
Base: patchouli, sandalwood, musk

WOODY

sophisticated and classy

WITH A CITRUS NOTE

PURE ROYAL 843  
170843 |

Type:  
bright, elegant

Fragrance notes:  
Head: mandarin, lemon, lavender  
Heart: jasmine, pear, orange blossom  
Base: vanilla, woody notes, amber, musk

CITRUS

joyful and energetic

WITH A FLORAL NOTE

PURE ROYAL 844  
170844 |

Type:  
fresh, serene

Fragrance notes:  
Head: mandarin, marine notes, lemon, green apple, tropical fruits  
Heart: jasmine, violet, ylang-ylang, lily of the valley, blackcurrant, hyacinth, geranium  
Base: patchouli, benzoin resin, coconut, peach skin, musk



FLORAL

sensual and romantic

WITH A FRUITY NOTE

PURE ROYAL 281  
170281 |

Type:  
vibrant, hot

Fragrance notes:  
Head: blackcurrant  
Heart: jasmine, rose  
Base: musk, strawberry

PURE ROYAL 322  
170322 |

Type:  
serene, sensual

Fragrance notes:  
Head: quince, grapefruit  
Heart: jasmine, hyacinth  
Base: white musk, cedarwood

PURE ROYAL 708  
170708 |

Type:  
harmonious, juicy

Fragrance notes:  
Head: bergamot, lychee, peach  
Heart: jasmine, peony, orange blossom  
Base: woody notes, moss, musk

PURE ROYAL 711  
170711 |

Type:  
mature, balanced, friendly

Fragrance notes:  
Head: apple, mandarin, clove, orange  
Heart: rose, jasmine, orange blossom  
Base: patchouli, vanilla, musk, sandalwood

PURE ROYAL 800  
170800 |

Type:  
feminine, joyful, sunny, full of positive energy

Fragrance notes:  
Head: mandarin, grapefruit, blackcurrant  
Heart: jasmine, tuberose, ylang-ylang  
Base: rose, sandalwood, musk

PURE ROYAL 806  
170806 |

Type:  
bold, joyful, positive

Fragrance notes:  
Head: mandarin, jasmine, water notes  
Heart: rose, tuberose, ylang-ylang  
Base: musk, sandalwood, cedarwood

PURE ROYAL 807  
170807 |

Type:  
romantic, light, fresh

Fragrance notes:  
Head: bergamot, neroli, petitgrain  
Heart: wild peach, lily of the valley, jasmine  
Base: cedarwood, musk

PURE ROYAL 817  
170817 |

Type:  
joyful, subtle, full of brilliance

Fragrance notes:  
Head: raspberry, lemon  
Heart: rose, neroli  
Base: musk, vanilla, patchouli

PURE ROYAL 818  
170818 |

Type:  
joyful, fresh, tempting

Fragrance notes:  
Head: red berries, mandarin, lemon, pear  
Heart: gardenia, jasmine, lily of the valley, neroli  
Base: vanilla, patchouli, musk, benzoin resin

PURE ROYAL 827  
170827 |

Type:  
joyful, full of energy, sunny

Fragrance notes:  
Head: peach, lemon, apple blossom, juicy pear, violet leaves  
Heart: jasmine, freesia, hibiscus, green leaves  
Base: musk, cedarwood, sandalwood

PURE ROYAL 833  
170833 |

Type:  
powdery, magnificent, feminine

Fragrance notes:  
Head: peach, orange, honeysuckle  
Heart: tuberose, jasmine, iris  
Base: sandalwood, cedarwood, vanilla, musk

PURE ROYAL 835  
170835 |

Type:  
sweet, but edgy, feisty

Fragrance notes:  
Head: apple, pear, bergamot, lemon, peach  
Heart: lily of the valley, jasmine, rose, iris  
Base: cedarwood, patchouli, vanilla, ambergris, musk

PURE ROYAL 836  
170836 |

Type:  
clear, pleasant, optimistic

Fragrance notes:  
Head: pear, apple, bergamot, lily of the valley, raspberry  
Heart: peony, rose, magnolia, freesia  
Base: sandalwood, musk, patchouli, amber

WITH AN ALDEHYDE NOTE

PURE ROYAL 826  
170826 |

Type:  
classic, fresh

Fragrance notes:  
Head: aldehyde, bergamot, violet  
Heart: lily of the valley, jasmine, ylang-ylang  
Base: clover, iris, musk

WITH AN ORIENTAL NOTE

PURE ROYAL 146  
170146 |

Type:  
imbued with sweetness, mysterious

Fragrance notes:  
Head: freesia, apple, Jamaican pepper  
Heart: violet, hibiscus, rose, lilac  
Base: labdanum, sandalwood, cedarwood, suede

PURE ROYAL 147  
170147 |

Type:  
tasteful, alluring

Fragrance notes:  
Head: lychee, mandarin, peach  
Heart: plum, lily of the valley, lily  
Base: vanilla, ambergris, musk, suede

PURE ROYAL 317  
170317 |

Type:  
seductive, sensual

Fragrance notes:  
Head: red berries, pink pepper  
Heart: raspberry, peach, violet, lilac  
Base: patchouli, ambergris

PURE ROYAL 352  
170352 |

Type:  
velvety, thrilling

Fragrance notes:  
Head: orange blossom  
Heart: jasmine  
Base: patchouli, honey

PURE ROYAL 355  
170355 |

Type:  
sensual, seductive

Fragrance notes:  
Head: citrus notes  
Heart: jasmine tea, lily  
Base: sandalwood, cedarwood, vanilla



PURE ROYAL  
Perfume

50 ml | Fragrance: 20%





Perfume  
PURE ROYAL

50 ml | Fragrance: 20%

FLORAL

sensual and romantic

WITH A WATER NOTE

PURE ROYAL 141  
170141 |

Type:  
crystal clear, romantic

Fragrance notes:  
Head: yuzu, pomegranate, ice chord  
Heart: lotus, magnolia, peony  
Base: ambergris, musk, mahogany

PURE ROYAL 707  
170707 |

Type:  
full of energy, evoking the memory of summer

Fragrance notes:  
Head: bergamot, lemon, orange, mandarin, leafy notes  
Heart: lily of the valley, jasmine, water notes  
Base: patchouli, peach, ambergris

WITH A CITRUS NOTE

PURE ROYAL 298  
170298 |

Type:  
full of energy, fresh

Fragrance notes:  
Head: citrus fruits, peony  
Heart: rose, Osmanthus  
Base: patchouli, sandalwood

PURE ROYAL 810  
170810 |

Type:  
subtle, delicate, feminine, serene

Fragrance notes:  
Head: bergamot, mandarin, blackcurrant  
Heart: pink peony, rose, lily of the valley, peach, apricot  
Base: musk, amber, patchouli, oakmoss

WITH A WOODY NOTE

PURE ROYAL 365  
170365 |

Type:  
classic with a note of Baroque splendour

Fragrance notes:  
Head: grapefruit, bergamot  
Heart: rose, daffodil, jasmine, geranium, patchouli  
Base: sandalwood, vanilla, white musk, tonka bean

PURE ROYAL 710  
170710 |

Type:  
tempting, nonconformist

Fragrance notes:  
Head: jasmine, osmanthus, rose  
Heart: tuberose, narcissus  
Base: amber, cedarwood

PURE ROYAL 713  
170713 |

Type:  
rosy, defined, elegant

Fragrance notes:  
Head: saffron  
Heart: rose, jasmine, peony  
Base: woody notes, musk, ambergris

PURE ROYAL 715  
170715 |

Type:  
diversified, elegant, classic

Fragrance notes:  
Head: yellow mandarin, green pear, pink pepper, blackcurrent, peach, apple  
Heart: jasmine sambac, orange tree, lily of the valley, rose, marigold  
Base: patchouli, white musk, cedarwood, dry wood, vanilla, cashmere

PURE ROYAL 777  
170777 |

Type:  
elegant, toned, vintage

Fragrance notes:  
Head: bergamot, peach, plum, blackcurrant, lily, pear  
Heart: mimosa, rose, jasmine, heliotrope, lily of the valley, coconut  
Base: vanilla, sandalwood, tonka bean, musk, caramel

CITRUS

joyful and energetic

WITH A MANDARIN NOTE

PURE ROYAL 801  
170801 |

Type:  
fresh, romantic, sensual, full of charm

Fragrance notes:  
Head: citrus cocktail, pink berries, pear, green notes  
Heart: rose, magnolia, night blooming jasmine  
Base: patchouli, vanilla, tonka bean, sandalwood

WITH A LEMON NOTE

PURE ROYAL 712  
170712 |

Type:  
energetic, bright, southern

Fragrance notes:  
Head: bergamot, lemon, red berries, clementine, apple blossom  
Heart: cardamom, jasmine  
Base: sandalwood, cedarwood, musk

PURE ROYAL 828  
170828 |

Type:  
delightful, full of sweetness

Fragrance notes:  
Head: lemon, raspberry, almond, blackcurrant  
Heart: rose, orange blossom, jasmine  
Base: vanilla, patchouli, ambergris, musk

WITH A FLORAL NOTE

PURE ROYAL 709  
170709 |

Type:  
refreshing, transparent, independent

Fragrance notes:  
Head: bergamot, lemon, neroli, marigold  
Heart: violet, jasmine, cyclamen  
Base: black amber, musk, vetiver, cedarwood

PURE ROYAL 714  
170714 |

Type:  
fresh, serene, transparent

Fragrance notes:  
Head: bergamot, lime, apple blossom, juicy pear  
Heart: jasmine, rose, black pepper  
Base: musk, sandalwood, heliotrope

ORIENTAL

strong and untamed

WITH A FLORAL NOTE

PURE ROYAL 171  
170171 |

Type:  
expressive, intense, captivating

Fragrance notes:  
Head: pineapple, nectarine, juicy pear  
Heart: pink peony, freesia, frangipani  
Base: musk, sandalwood, patchouli, tonka bean, vanilla

PURE ROYAL 809  
170809 |

Type:  
sophisticated and tasteful

Fragrance notes:  
Head: bergamot, ginger, water notes  
Heart: incense, rose, patchouli  
Base: musk, vanilla, vetiver

PURE ROYAL 820  
170820 |

Type:  
sensual, provocative, magnetic

Fragrance notes:  
Head: orange blossom, peach  
Heart: ylang-ylang, rose  
Base: sandalwood, ambergris, vanilla, musk

PURE ROYAL 834  
170834 |

Type:  
warm, creamy, enveloping

Fragrance notes:  
Head: bergamot, lily of the valley  
Heart: rose, coconut, lily  
Base: benzoin resin, amber, wood, vanilla, sandalwood

WITH A FRUITY NOTE

PURE ROYAL 286  
170286 |

Type:  
sexy, sophisticated

Fragrance notes:  
Head: bergamot  
Heart: rose, patchouli  
Base: ambergris, orange



ORIENTAL

strong and untamed

WITH A WOODY NOTE

PURE ROYAL 142  
170142 |

Type:  
provocative, addictive

Fragrance notes:  
Head: blackberry, mandarin leaves  
Heart: rose, tuberose, orange blossom  
Base: sandalwood, tonka bean, vanilla

PURE ROYAL 162  
170162 |

Type:  
classical, slightly sweet

Fragrance notes:  
Head: floral honey  
Heart: rose, vanilla  
Base: musk, patchouli

PURE ROYAL 359  
170359 |

Type:  
magnetic, intense

Fragrance notes:  
Head: jasmine, heliotrope  
Heart: iris root, cashmere wood  
Base: ambergris, vanilla

WITH A SPICY NOTE

PURE ROYAL 366  
170366 |

Type:  
rebellious, urban, sexy, edgy

Fragrance notes:  
Head: pink pepper, orange blossom, pear  
Heart: coffee, jasmine  
Base: vanilla, patchouli, cedarwood

WOODY

sophisticated and classy

WITH A FRUITY NOTE

PURE ROYAL 358  
170358 |

Type:  
ultra-feminine, delightful

Fragrance notes:  
Head: bergamot, blackcurrant  
Heart: jasmine, lily of the valley  
Base: cedarwood, sandalwood, tonka bean, vanilla

WITH A FLORAL NOTE

PURE ROYAL 825  
170825 |

Type:  
elegant, not obvious

Fragrance notes:  
Head: bergamot, lavender, wormwood  
Heart: balsam fir, jasmine, cedarwood  
Base: oakmoss, musk, vanilla

CHYPRE

sensual and tempting

WITH A FRUITY NOTE

PURE ROYAL 362  
170362 |

Type:  
overwhelming, seductive

Fragrance notes:  
Head: blackcurrant leaf  
Heart: rose, freesia  
Base: patchouli, vanilla, ambroxan, woody notes

PURE ROYAL 804  
170804 |

Type:  
bold, modern, full of charm

Fragrance notes:  
Head: mandarin, blackcurrant, bamboo leaves  
Heart: rose, peony, orange blossom  
Base: patchouli, praline, musk

PURE ROYAL 811  
170811 |

Type:  
fresh, frivolous, comfortable

Fragrance notes:  
Head: bergamot, pear, raspberry  
Heart: jasmine, orange blossom, rose  
Base: amber, patchouli, musk

PURE ROYAL 829  
170829 |

Type:  
stylish, adds self-confidence

Fragrance notes:  
Head: mandarin, lemon, nectarine  
Heart: pepper, freesia, peony  
Base: caramel, musk, vanilla, sandalwood

WITH A FLORAL NOTE

PURE ROYAL 802  
170802 |

Type:  
provocative, sensual, extraordinary

Fragrance notes:  
Head: grapefruit, pink peppercorn, sea water chord  
Heart: geranium, jasmine, rose  
Base: patchouli, musk, vanilla

PURE ROYAL 803  
170803 |

Type:  
sensual, seductive, scandalous

Fragrance notes:  
Head: orange, honey, wild peach  
Heart: gardenia, orange blossom, iris  
Base: patchouli, vanilla, amber

PURE ROYAL 819  
170819 |

Type:  
sophisticated, modern, elegant

Fragrance notes:  
Head: red pepper, bergamot, plum blossom  
Heart: Turkish rose, wild jasmine, patchouli  
Base: leather, ambergris, oakmoss, sandalwood, tonka bean, vanilla



PURE ROYAL  
Perfume

50 ml | Fragrance: 20%



## NEW



## PURE ROYAL Perfume

50 ml | Fragrance: 20%

### FOUGERE

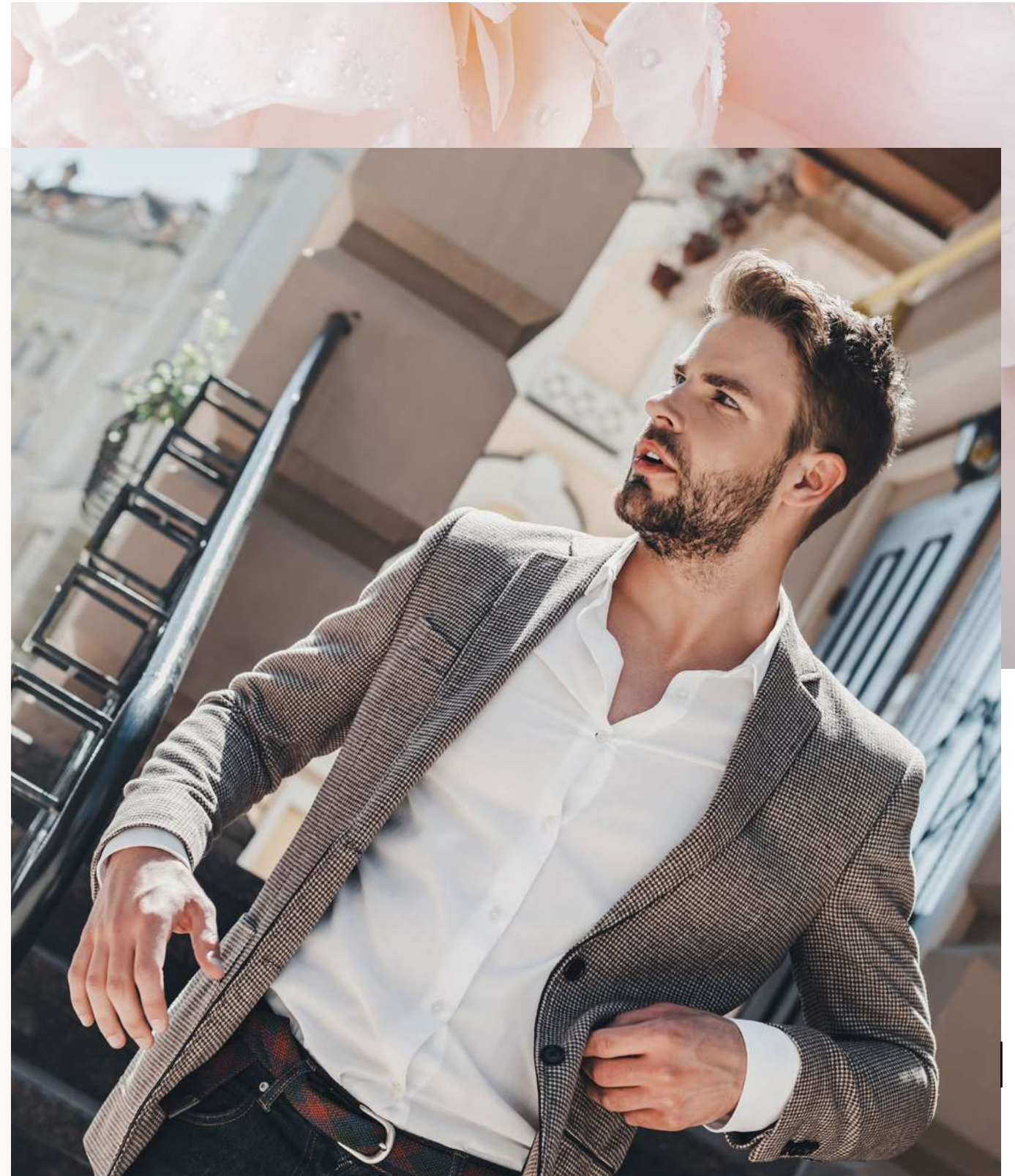
seductive and classic

#### WITH A LAVENDER NOTE

**PURE ROYAL 849**  
170849 |

**Type:**  
classic, bright

**Fragrance notes:**  
Head: mandarin, grapefruit, cistus, pepper, rosemary  
Heart: patchouli, ginger, lavender, cedarwood, geranium  
Base: benzoin resin, vetiver, amber, musk, dry wood





## CHYPRE

sensual and tempting

### WITH A FRUITY NOTE

#### PURE ROYAL 169

170169 |

**Type:**

relaxing, spicy

**Fragrance notes:**

Head: Sicilian mandarin

Heart: rosemary, rosewood, Sichuan pepper

Base: incense, oakmoss

## ORIENTAL

strong and untamed

### WITH A FRUITY NOTE

#### PURE ROYAL 813

170813 |

**Type:**

touching, timeless

**Fragrance notes:**

Head: jasmine, lemon, mint, bergamot

Heart: wormwood, lavender, coffee

Base: musk, sandalwood, tonka bean, patchouli, vanilla, amber, moss

#### PURE ROYAL 830

170830 |

**Type:**

strong, for self-confident men

**Fragrance notes:**

Head: green apple, mandarin

Heart: orange blossom, lavender, carrot seeds, rum accord, nutmeg

Base: leather, vanilla, tonka bean, cedarwood

### WITH A SPICY NOTE

#### PURE ROYAL 199

170199 |

**Type:**

rich, multi-dimensional

**Fragrance notes:**

Head: Italian mandarin, peppermint

Heart: cinnamon, Turkish rose, cardamom

Base: leather notes

#### PURE ROYAL 815

170815 |

**Type:**

bold, voluptuous, magnetic, vibrant

**Fragrance notes:**

Head: ginger, thyme, bergamot, grapefruit, resin, lemon

Heart: liqueur, apple, cinnamon, pepper, vanilla, lavender, geranium

Base: sugar, vetiver, myrrh, olibanum, amber, musk, oakmoss, leather

#### PURE ROYAL 832

170832 |

**Type:**

uncompromising, blunt

**Fragrance notes:**

Head: black pepper, lavender

Heart: iris, clove, cinnamon

Base: black vanilla, patchouli

### WITH A WOODY NOTE

#### PURE ROYAL 301

170301 |

**Type:**

energetic, powerful

**Fragrance notes:**

Head: mandarin, lemon

Heart: cedarwood, coriander

Base: ambergris, labdanum

#### PURE ROYAL 326

170326 |

**Type:**

seductive, sensual

**Fragrance notes:**

Head: birch leaves

Heart: cardamom, African violet

Base: woody notes, musk

#### PURE ROYAL 335

170335 |

**Type:**

distinct, modern

**Fragrance notes:**

Head: rosewood, cardamom, pepper

Heart: vetiver, oud

Base: vanilla, ambergris

#### PURE ROYAL 812

170812 |

**Type:**

powerful, modern, sophisticated

**Fragrance notes:**

Head: bergamot, black pepper, nutmeg

Heart: monoi oil, thyme, lavender

Base: cedarwood, patchouli, musk

#### PURE ROYAL 821

170821 |

**Type:**

energising, charismatic, seductive

**Fragrance notes:**

Head: grapefruit, plum, driftwood

Heart: hazelnut, cedarwood, white honey

Base: patchouli, moss, dry wood

#### PURE ROYAL 822

170822 |

**Type:**

bold, multi-dimensional, addictive

**Fragrance notes:**

Head: mandarin, incense, pepper

Heart: water notes, lavender, plum

Base: cedarwood, sandalwood, vetiver, amber

#### PURE ROYAL 837

170837 |

**Type:**

cheeky, extraordinary, surprising

**Fragrance notes:**

Head: bergamot, black pepper, white pepper

Heart: cedarwood, sage

Base: tonka bean, amberwood, cocoa

### WITH AN AMBERGRIS NOTE

#### PURE ROYAL 823

170823 |

**Type:**

decadent, luxurious, controversial

**Fragrance notes:**

Head: wild lavender, clary sage

Heart: vanilla blossom, iris, almond

Base: cashmere musk, tonka bean, leather, ambergris

### WITH A GOURMAND NOTE

#### PURE ROYAL 839

170839 |

**Type:**

sensual, powerful, full of love

**Fragrance notes:**

Head: cardamom, pink pepper, mint, sage

Heart: violet, leaves, orange blossom,

lavender, pineapple

Base: vanilla, cedarwood, amber, guaiac wood



# PURE ROYAL Perfume

50 ml | Fragrance: 20%





PURE ROYAL  
Perfume

50 ml | Fragrance: 20%

WOODY

sophisticated and classy

WITH A FRUITY NOTE

PURE ROYAL 195  
170195 |

Type:  
noble, classic

Fragrance notes:  
Head: coriander, basil  
Heart: cardamom  
Base: cedarwood, ambergris, tobacco

PURE ROYAL 824  
170824 |

Type:  
fresh, free, transparent

Fragrance notes:  
Head: lime zest, green mandarin  
Heart: grapefruit blossom, candied ginger, yellow mandarin  
Base: vetiver, white musk, amberwood

WITH A PATCHOULI NOTE

PURE ROYAL 160  
170160 |

Type:  
mild, surprising

Fragrance notes:  
Head: tomato leaves, water flowers, blackcurrant  
Heart: black pepper, rose  
Base: patchouli

PURE ROYAL 198  
170198 |

Type:  
flamboyant, expressive

Fragrance notes:  
Head: bergamot  
Heart: black pepper, tobacco  
Base: patchouli, cypress

PURE ROYAL 327  
170327 |

Type:  
untamed, powerful

Fragrance notes:  
Head: grapefruit, pink pepper  
Heart: nutmeg, ginger, jasmine  
Base: vetiver, patchouli, labdanum

PURE ROYAL 334  
170334 |

Type:  
refreshing, with a hint of spice

Fragrance notes:  
Head: grapefruit, orange  
Heart: geranium leaves, black pepper, pink pepper  
Base: cedarwood, vetiver, patchouli

WITH A VETIVER NOTE

PURE ROYAL 151  
170151 |

Type:  
sophisticated, impressive

Fragrance notes:  
Head: lemon, bergamot, ginger  
Heart: cedarwood, amber  
Base: geranium, musk

PURE ROYAL 152  
170152 |

Type:  
elegant, harmonious

Fragrance notes:  
Head: bergamot  
Heart: pepper, incense, leather, tobacco  
Base: cedarwood

WITH A CHYPRE NOTE

PURE ROYAL 838  
170838 |

Type:  
imperious, expressive, relentless

Fragrance notes:  
Head: bergamot, neroli  
Heart: orange blossom, cedarwood  
Base: leather, white musk, amber, ambergris, woody notes

FOUGERE

seductive and classic

WITH A FERN NOTE

PURE ROYAL 332  
170332 |

Type:  
light, full of energy

Fragrance notes:  
Head: green apple, mint, mandarin  
Heart: ginger, sage, fern  
Base: oakmoss, musk, sandalwood

WITH A LAVENDER NOTE

PURE ROYAL 300  
170300 |

Type:  
light, dynamic

Fragrance notes:  
Head: bergamot, lemon, grapefruit  
Heart: ginger, lavender  
Base: Atlas cedarwood

PURE ROYAL 814  
170814 |

Type:  
intense, magnetic, dynamic

Fragrance notes:  
Head: ginger, cardamom, anise, apple  
Heart: cinnamon, lavender, absinthe, plum, violet  
Base: cedarwood, dry wood, amber, vanilla, tonka bean, musk

PURE ROYAL 831  
170831 |

Type:  
transparent, fresh, mild

Fragrance notes:  
Head: bergamot, mandarin, green notes  
Heart: lavender, rhubarb, apple blossom  
Base: sandalwood, oakmoss, cedarwood, musk

CITRUS

joyful and energetic

WITH AN ORIENTAL NOTE

PURE ROYAL 840  
170840 |

Type:  
attractive, bright, multi-dimensional

Fragrance notes:  
Head: ginger, mandarin, lemon, basil, bergamot, violet leaf  
Heart: orange flower, pepper, tobacco leaf, grapefruit flower  
Base: amber, patchouli, oakmoss, vetiver, cedar wood, leather



PURE ROYAL 15 ML

- FOR HER
- PURE ROYAL 142 | 170142.02 |
  - PURE ROYAL 146 | 170146.02 |
  - PURE ROYAL 147 | 170147.02 |
  - PURE ROYAL 162 | 170162.02 |
  - PURE ROYAL 171 | 170171.02 |
  - PURE ROYAL 298 | 170298.02 |
  - PURE ROYAL 317 | 170317.02 |
  - PURE ROYAL 322 | 170322.02 |
  - PURE ROYAL 352 | 170352.02 |
  - PURE ROYAL 359 | 170359.02 |
  - PURE ROYAL 362 | 170362.02 |
  - PURE ROYAL 366 | 170366.02 |
  - PURE ROYAL 800 | 170800.02 |
  - PURE ROYAL 803 | 170803.02 |
  - PURE ROYAL 807 | 170807.02 |
  - PURE ROYAL 809 | 170809.02 |
  - PURE ROYAL 810 | 170810.02 |
  - PURE ROYAL 811 | 170811.02 |
  - PURE ROYAL 817 | 170817.02 |
  - PURE ROYAL 820 | 170820.02 |

- FOR HIM
- PURE ROYAL 199 | 170199.02 |
  - PURE ROYAL 301 | 170301.02 |
  - PURE ROYAL 327 | 170327.02 |
  - PURE ROYAL 334 | 170334.02 |
  - PURE ROYAL 335 | 170335.02 |
  - PURE ROYAL 814 | 170814.02 |
  - PURE ROYAL 815 | 170815.02 |
  - PURE ROYAL 821 | 170821.02 |
  - PURE ROYAL 822 | 170822.02 |
  - PURE ROYAL 823 | 170823.02 |

PURE ROYAL  
Perfume

15 ml | Fragrance: 20%



COMING  
SOON





ENGRAVING  
ON THE GLASS

PURE  
Perfume

50 ml | Fragrance: 20%

NEW

FLORAL

sensual and romantic

WITH A CITRUS NOTE

PURE 491  
100491 |

Type:  
serene, carefree

Fragrance notes:  
Head: ylang-ylang, lemon, sea breeze  
Heart: jasmine, rose, orange blossom  
Base: plum, cashmeran, musk

WITH A FRUITY NOTE

PURE 493  
100493 |

Type:  
seductive, lovely

Fragrance notes:  
Head: raspberry, blackcurrant, pear,  
orange  
Heart: rose, freesia  
Base: vanilla, musk, cashmere, patchouli

ORIENTAL

strong and untamed

WITH A FRUITY NOTE

PURE 492  
100492 |

Type:  
light, powdery

Fragrance notes:  
Head: rhubarb, narcissus  
Heart: almond, milk  
Base: cashmere, cedarwood





FLORAL

sensual and romantic

WITH A FRUITY NOTE

**PURE 10**  
100010 |  
**Type:**  
warm, sweet  
**Fragrance notes:**  
Head: mandarin, ivy leaves, champaca flowers  
Heart: jasmine, African orchid, rose  
Base: amaranth wood, blackberry, musk

**PURE 17**  
100017 |  
**Type:**  
stimulating, friendly  
**Fragrance notes:**  
Head: melon, peach, apple  
Heart: freesia, lily, mimosa, tuberose, jasmine  
Base: cedarwood, ylang-ylang, musk

**PURE 25**  
100025 |  
**Type:**  
harmonious, slightly brash  
**Fragrance notes:**  
Head: green apple, water accents  
Heart: jasmine, freesia, iris, passiflora  
Base: sandalwood, cedarwood, vanilla

**PURE 180**  
100180 |  
**Type:**  
seductive, changeable  
**Fragrance notes:**  
Head: lychee, raspberry, rose  
Heart: freesia, lily of the valley, cedarwood  
Base: vanilla, ambergris, vetiver

**PURE 420**  
100420 |  
**Type:**  
seductively sweet, tempting  
**Fragrance notes:**  
Head: red fruits, mandarin  
Heart: lily of the valley, peony  
Base: praline, amber, musk, caramel

**PURE 427**  
100427 |  
**Type:**  
joyful, captivating  
**Fragrance notes:**  
Head: raspberry, bergamot  
Heart: rose, iris, violet  
Base: patchouli  
**PURE 437**  
100437 |  
**Type:**  
seductive, full of sweetness  
**Fragrance notes:**  
Head: bergamot, strawberry, fresh flowers  
Heart: peach, Osmanthus, raspberry macaroons  
Base: cocoa, amber, vanilla

**PURE 438**  
100438 |  
**Type:**  
sweet, feminine, subtle  
**Fragrance notes:**  
Head: apple flower, nectarine, pear  
Heart: jasmine, peony, heliotrope  
Base: brown sugar, olibanum, vanilla, musk

**PURE 443**  
100443 |  
**Type:**  
elegant, tempting, warm  
**Fragrance notes:**  
Head: orange, bergamot, blackcurrant  
Heart: jasmine, orange flower, ylang-ylang, lily of the valley  
Base: cedarwood, sandalwood, vanilla

**PURE 447**  
100447 |  
**Type:**  
expressive, charming, serene  
**Fragrance notes:**  
Head: exotic fruits, red fruits, bergamot, yellow plum, pink berries  
Heart: lily of the valley, freesia, rose, jasmine, peach  
Base: patchouli, moss, musk, amberwood, sandalwood

**PURE 449**  
100449 |  
**Type:**  
multi-dimensional, thrilling, full of charm  
**Fragrance notes:**  
Head: lemon, mandarin, pear, bergamot, liquorice, rhubarb, peach, pineapple, coconut, plum, grapefruit, cardamom  
Heart: jasmine sambac, rose, lily of the valley, orange tree, sunny notes, violet, geranium, wine lees  
Base: vanilla, gourmand, patchouli, musk, sandalwood, cedarwood, dry wood

**PURE 486**  
100486 |  
**Type:**  
sweet, girly, appetising  
**Fragrance notes:**  
Head: pink pepper, raspberry, bergamot  
Heart: peony, rose, lily of the valley, iris  
Base: sandalwood, patchouli, cedarwood, musk

**PURE 700**  
100700 |  
**Type:**  
feminine, sensual  
**Fragrance notes:**  
Head: lemon, apple, violet leaves  
Heart: peony, lily of the valley  
Base: cedarwood, musk, amber

**PURE 716**  
100716 |  
**Type:**  
sweet, charming, carefree  
**Fragrance notes:**  
Head: mandarin, lemon, blackberry, blackcurrant  
Heart: jasmine, magnolia, water notes  
Base: musk, cedar wood, sandalwood

WITH A CHYPRE NOTE

**PURE 485**  
100485 |  
**Type:**  
surprising, ambiguous  
**Fragrance notes:**  
Head: lemon, blackcurrent, cranberry leaves  
Heart: rose, orange blossom, jasmine, peach  
Base: patchouli, cedarwood, amber, vanilla, tonka bean, oakmoss, musk

**PURE 706**  
100706 |  
**Type:**  
soft, powdery, romantic  
**Fragrance notes:**  
Head: bergamot, violet leaves, coriander  
Heart: peach, water lily, rose, violet, narcissus  
Base: vetiver, cedarwood, sandalwood, musk

WITH A GREEN NOTE

**PURE 01**  
100001 |  
**Type:**  
cool and warm at the same time  
**Fragrance notes:**  
Head: lemon, tea, cranberry  
Heart: jasmine, peony, water lily  
Base: woody notes, patchouli

**PURE 81**  
100081 |  
**Type:**  
eccentric but subtle  
**Fragrance notes:**  
Head: green apple, cucumber, magnolia  
Heart: lily of the valley, rose, violet  
Base: sandalwood, ambergris

WITH A WOODY NOTE

**PURE 414**  
100414 |  
**Type:**  
independent, very feminine  
**Fragrance notes:**  
Head: cactus  
Heart: pink freesia, jasmine, rose  
Base: cedarwood, woody notes

**PURE 445**  
100445 |  
**Type:**  
joyful, vibrating, juicy  
**Fragrance notes:**  
Head: mandarin, bergamot, nectarine  
Heart: rose, jasmine, honeysuckle, water lily  
Base: sandalwood, patchouli, cedarwood, vanilla, musk

WITH A CITRUS NOTE

**PURE 702**  
100702 |  
**Type:**  
expressive, full of passion  
**Fragrance notes:**  
Head: mandarin, bergamot, water notes  
Heart: jasmine, geranium, lily of the valley  
Base: musk, amber

WITH A WATER NOTE

**PURE 07**  
100007 |  
**Type:**  
balanced, mild  
**Fragrance notes:**  
Head: pineapple, peony, sweet pea  
Heart: freesia, jasmine, lily  
Base: sandalwood, cedarwood, musk

**PURE 174**  
100174 |  
**Type:**  
magical, flickering  
**Fragrance notes:**  
Head: freesia, lychee  
Heart: lily, magnolia, jasmine, ginger, pepper  
Base: amber, musk



PURE  
Perfume

50 ml | Fragrance: 20%

**PURE 488**  
100488 |  
**Type:**  
delicate, radiant, elegant  
**Fragrance notes:**  
Head: grapefruit, bergamot, lychee, water notes  
Heart: rose, jasmine, magnolia, clove  
Base: sandalwood, ambergris, oakmoss, cedarwood, musk

**PURE 701**  
100701 |  
**Type:**  
magnetic, sensual  
**Fragrance notes:**  
Head: pineapple, rhubarb, apple  
Heart: jasmine, lily of the valley, freesia  
Base: musk, peach



FLORAL

sensual and romantic

WITH AN ALDEHYDE NOTE

PURE 21  
100021 |

Type:  
classic, warm, enveloping

Fragrance notes:  
Head: aldehyde, ylang-ylang, orange blossom  
Heart: rose, lily of the valley, iris  
Base: civet, oakmoss, sandalwood

WITH AN ORIENTAL NOTE

PURE 20  
100020 |

Type:  
seductive, sensual

Fragrance notes:  
Head: Osmanthus, black tea, bergamot  
Heart: rose, freesia, magnolia, orchid  
Base: musk, patchouli

PURE 97  
100097 |

Type:  
delightful, velvety

Fragrance notes:  
Head: freesia, lily of the valley, rose  
Heart: lily, gardenia, palm tree, narcissus  
Base: blackcurrant, musk, oakmoss

PURE 132  
100132 |

Type:  
exclusive, intense

Fragrance notes:  
Head: ginger, cardamom, pepper, orange  
Heart: tuberose, coconut, gardenia, peony  
Base: ambergris, musk

PURE 183  
100183 |

Type:  
sharp, strong

Fragrance notes:  
Head: cranberry, pink pepper, tamarind  
Heart: black violet, cocoa, rose, hellebore  
Base: patchouli, vanilla, Massoia wood

PURE 239  
100239 |

Type:  
vibrating, intense

Fragrance notes:  
Head: cardamom, pink pepper, mandarin  
Heart: iris, campanula, Ceylon  
Base: cedarwood, vetiver, musk

PURE 434  
100434 |

Type:  
audacious, addictive

Fragrance notes:  
Head: orange, grapefruit, liquorice  
Heart: rose, orange blossom, lily of the valley, iris  
Base: sandalwood, vanilla, musk

PURE 444  
100444 |

Type:  
tempting, surprising, warm

Fragrance notes:  
Head: bergamot, pear, sweet orange  
Heart: rose, iris, violet, ylang-ylang  
Base: vanilla, musk, patchouli, coffee

PURE 446  
100446 |

Type:  
rebellious, sensual

Fragrance notes:  
Head: bergamot, apple, hyacinth, petitgrain  
Heart: orange blossom, jasmine, tuberose, rose  
Base: cedarwood, vanilla, musk, cashmere wood, dry amber, heliotrope

PURE 487  
100487 |

Type:  
fantasy, sensual, alluring

Fragrance notes:  
Head: pink pepper, raspberry, blackcurrent, apple  
Heart: rose, peony, clove, iris  
Base: patchouli, sandalwood, musk, vanilla

PURE 489  
100489 |

Type:  
futuristic, eccentric

Fragrance notes:  
Head: green leaves, anise, blackcurrent  
Heart: orange blossom, water notes, lily of the valley, cashmere wood  
Base: cedarwood, patchouli, tonka bean, ambergris



PURE  
Perfume

50 ml | Fragrance: 20%





ORIENTAL

strong and untamed

WITH A FLORAL NOTE

PURE 09  
100009 |

Type: deeply memorable, magical

Fragrance notes:  
Head: violet, cardamom, green fruits  
Heart: almond, jasmine  
Base: vanilla, musk

PURE 101  
100101 |

Type: sophisticated, unforgettable

Fragrance notes:  
Head: orange blossom, pear  
Heart: ginger, incense  
Base: sandalwood, vanilla, honey, musk

PURE 257  
100257 |

Type: exquisite, surprising

Fragrance notes:  
Head: rose, honeysuckle, mandarin  
Heart: daisy, jasmine  
Base: musk, patchouli

PURE 431  
100431 |

Type: cheeky, sensual, alluring

Fragrance notes:  
Head: bergamot, apple  
Heart: jasmine, lily of the valley  
Base: tonka bean, musk

PURE 436  
100436 |

Type: charming, rebellious

Fragrance notes:  
Head: coconut, hazelnut, lily of the valley  
Heart: orange blossom, rose  
Base: cashmere wood, vanilla, amber

PURE 440  
100440 |

Type: exquisite, sensual

Fragrance notes:  
Head: blackcurrant, hazelnut, peach, rhubarb  
Heart: iris, orange blossom, caramel, coconut  
Base: vanilla, patchouli, musk

PURE 441  
100441 |

Type: fresh, liberated

Fragrance notes:  
Head: bergamot, lavender, ylang-ylang  
Heart: jasmine, iris  
Base: vanilla, sandalwood, musk

PURE 442  
100442 |

Type: warm, spicy, intriguing

Fragrance notes:  
Head: rose, orange flower, pear  
Heart: coffee, jasmine, peach  
Base: vanilla, patchouli, cedarwood

PURE 717  
100717 |

Type: enticing, rebellious

Fragrance notes:  
Head: pepper, fresh flowers, water musk  
Heart: jasmine, white musk  
Base: sandalwood, cashmere, frozen musk

WITH A WOODY NOTE

PURE 26  
100026 |

Type: warming, enveloping

Fragrance notes:  
Head: guava, raspberry, bergamot, coconut  
Heart: water lily, rose, pepper, magnolia  
Base: sandalwood, vanilla, coffee, caramel

PURE 448  
100448 |

Type: surprising, seductive, with a hint of sweetness

Fragrance notes:  
Head: rose petals, saffron blossom, white woods  
Heart: jasmine sambac, plum, vanilla planifolia  
Base: vetiver, amber, musk

WITH A SPICY NOTE

PURE 24  
100024 |

Type: exotic, very spicy

Fragrance notes:  
Head: mandarin, cumin, clove  
Heart: mango, heliotrope, cardamom  
Base: musk, vanilla, ambergris

PURE 173  
100173 |

Type: dreamlike, dimmed

Fragrance notes:  
Head: anise, liquorice  
Heart: Jacaranda wood, bitter almond  
Base: sandalwood, musk, moss

PURE 177  
100177 |

Type: triggering desires, warm

Fragrance notes:  
Head: bergamot, bay leaf, pink pepper  
Heart: saffron, orange blossom  
Base: incense, vanilla, sandalwood

WITH A FRUITY NOTE

PURE 12  
100012 |

Type: hypnotising, seductive

Fragrance notes:  
Head: passiflora  
Heart: jasmine, gardenia  
Base: vanilla, maple, vetiver

PURE 32  
100032 |

Type: fascinating, ambiguous

Fragrance notes:  
Head: melon, coconut, mandarin, candy floss  
Heart: blackberry, mango, plum, honey  
Base: vanilla, chocolate, toffee

PURE 98  
100098 |

Type: fresh, subtle

Fragrance notes:  
Head: blackcurrant, bergamot, lemon  
Heart: jasmine, lily of the valley, rose  
Base: sandalwood, cedarwood, amber

PURE 237  
100237 |

Type: provocative, flirty

Fragrance notes:  
Head: exotic fruits, blackcurrant  
Heart: peony, jasmine, plum  
Base: vanilla, musk, ambergris

PURE 413  
100413 |

Type: very sweet, slightly flirtatious

Fragrance notes:  
Head: blackcurrant, pear  
Heart: iris, jasmine, orange blossom  
Base: chocolate pralines, patchouli, vanilla



PURE 426  
100426 |

Type: bold, addictive

Fragrance notes:  
Head: bergamot, neroli  
Heart: orange blossom, raspberry, jasmine  
Base: patchouli, vanilla, cashmere wood

PURE  
Perfume

50 ml | Fragrance: 20%





PURE  
Perfume

50 ml | Fragrance: 20%

CITRUS

joyful and energetic

WITH A FRUITY NOTE

PURE 419

100419 |

Type:

optimistic, casual

Fragrance notes:

Head: citrus fruits, grapefruit, bergamot,

water notes, calone, melon, peach

Heart: woody notes, jasmine, lily of the valley

Base: musk, ambergris

WITH A LEMON NOTE

PURE 33

100033 |

Type:

refreshing, joyful

Fragrance notes:

Head: mango, Sicilian lemon, apple

Heart: jasmine, bamboo, white rose

Base: cedarwood, ambergris

WITH A MANDARIN NOTE

PURE 23

100023 |

Type:

sensual, with a bit of sweetness

Fragrance notes:

Head: lily of the valley, red orange

Heart: mandarin, jasmine, rose

Base: vanilla, sandalwood, white musk

WITH AN ORANGE NOTE

PURE 06

100006 |

Type:

ethereal, discrete

Fragrance notes:

Head: lemon, bergamot, mint

Heart: orange, green tea

Base: oakmoss, ambergris

WITH AN ORIENTAL NOTE

PURE 484

100484 |

Type:

bright and impressive at the same time

Fragrance notes:

Head: mandarin, orange, nutmeg, clove

Heart: orange blossom, jasmine, tuberose,

lavender

Base: vanilla, labdanum, patchouli,

sandalwood

CHYPRE

sensual and tempting

WITH A FLORAL NOTE

PURE 432

100432 |

Type:

chic, full of charm

Fragrance notes:

Head: mandarin, bergamot, green notes

Heart: rose, jasmine

Base: woody notes, musk

WITH A WOODY NOTE

PURE 18

100018 |

Type:

radiant, alluring

Fragrance notes:

Head: orange, orange blossom

Heart: rose, jasmine, ylang-ylang

Base: white musk, vetiver, tonka bean,

vanilla

WITH A FRUITY NOTE

PURE 05

100005 |

Type:

intriguing, modern

Fragrance notes:

Head: freesia, gardenia

Heart: sandalwood, rose, coriander

Base: vanilla, vetiver, patchouli

PURE 16

100016 |

Type:

fabulous, fascinating

Fragrance notes:

Head: mandarin, pear, green notes

Heart: orchid

Base: patchouli, toffee

PURE 34

100034 |

Type:

free, joyful

Fragrance notes:

Head: iris, pineapple, hyacinth, pink

pepper

Heart: jasmine, lemon

Base: vanilla, vetiver, musk

PURE 80

100080 |

Type:

surprising, appetising

Fragrance notes:

Head: strawberry sorbet, cherry,

pineapple

Heart: caramel popcorn, violet, rose

Base: musk, ambergris, patchouli

PURE 372

100372 |

Type:

elegant, classic, balanced

Fragrance notes:

Head: patchouli, green apple, bergamot,

lemon, pink pepper

Heart: sandalwood, rose, musk

Base: peach, blackcurrant, lily, ylang-ylang,

amber

WOODY

sophisticated and classy

WITH AN ORIENTAL NOTE

PURE 703

100703 |

Type:

fresh, light, joyful

Fragrance notes:

Head: lemon, blackcurrant, cranberry, tea

leaves

Heart: water lily, rose, white peony

Base: vanilla, patchouli, musk

WITH A FLORAL NOTE

PURE 241

100241 |

Type:

seductive, comfortable, full of charm

Fragrance notes:

Head: bergamot

Heart: ylang-ylang, Casablanca lily, orange

blossom

Base: sandalwood, amber resin, vanilla



NEW



PURE  
Perfume

50 ml | Fragrance: 20%



ORIENTAL

strong and untamed

WITH A FOUGERE NOTE

**PURE 494**  
100494 |

**Type:**  
transparent, bright

**Fragrance notes:**  
Head: orange, cinnamon  
Heart: iris, vetiver, chestnut  
Base: cashmere, tonka bean

**PURE 496**  
100496 |

**Type:**  
powerful but fresh

**Fragrance notes:**  
Head: apple, black pepper, bergamot  
Heart: cinnamon, cardamom  
Base: musk, vetiver, chestnut

WITH A CITRUS NOTE

**PURE 495**  
100495 |

**Type:**  
transparent, inviting

**Fragrance notes:**  
Head: mandarin  
Heart: coconut water  
Base: amber

WOODY

sophisticated and classy

WITH A CITRUS NOTE

**PURE 497**  
100497 |

**Type:**  
positive, elegant

**Fragrance notes:**  
Head: grapefruit, mandarin, lemon, pepper  
Heart: juniper, cedarwood, chilli, geranium  
Base: patchouli, vetiver, moss, woody and  
amber notes

CHYPRE

sensual and tempting

WITH A FRUITY NOTE

**PURE 498**  
100498 |

**Type:**  
transparent, trustworthy

**Fragrance notes:**  
Head: bergamot, melon, elemi resin,  
pineapple, orange, blackcurrant, lemon,  
apple, pink pepper  
Heart: rose, lily of the valley, absinth,  
lavender, cardamom  
Base: cedarwood, moss, leather, Haitian  
vetiver, patchouli, dry wood, musk



ORIENTAL

strong and untamed

WITH A SPICY NOTE

PURE 224  
100224 |

Type:  
sweet, seductive

Fragrance notes:  
Head: bergamot, grapefruit, grass  
Heart: saffron, violet, nutmeg, jasmine  
Base: cane sugar, vanilla, ambergris

PURE 466  
100466 |

Type:  
sexy, intriguing, smoky

Fragrance notes:  
Head: bergamot, basil, lavender, orange, lemon  
Heart: apple blossom, heliotrope, water notes, watermelon, clove  
Base: musk, cedarwood, tonka bean, sandalwood, guaiac wood

PURE 719  
100719 |

Type:  
transparent, surprising

Fragrance notes:  
Head: cypress, cardamom  
Heart: cashmere, sage  
Base: neroli, leather, patchouli

WITH A FLORAL NOTE

PURE 52  
100052 |

Type:  
thrilling, spirited

Fragrance notes:  
Head: apple, bergamot, mint  
Heart: jasmine, geranium, lavender  
Base: cinnamon, clove, musk

PURE 465  
100465 |

Type:  
suggestive, aromatic

Fragrance notes:  
Head: cardamom, bergamot, lemon, mint, orange  
Heart: sage, lavender, orange blossom, tonka bean, petitgrain  
Base: sandalwood, vanilla, ambergris, musk

PURE 481  
100481 |

Type:  
modern, flamboyant, extravagant  
rebellious

Fragrance notes:  
Head: bergamot, cypress, fresh flowers  
Heart: iris, lavender, Blonde Woods  
Base: amber, iris, musk

WITH AN AMBERGRIS NOTE

PURE 64  
100064 |

Type:  
tasteful, sensual

Fragrance notes:  
Head: mandarin, cedarwood, anise  
Heart: rosemary, olive tree flowers  
Base: musk, guaiacum, tonka bean

WITH A WOODY NOTE

PURE 471  
100471 |

Type:  
mysterious, extravagant

Fragrance notes:  
Head: mandarin, orange  
Heart: cinnamon, tobacco, clove  
Base: patchouli, tonka bean, myrrh

PURE 475  
100475 |

Type:  
warm, attractive

Fragrance notes:  
Head: bergamot, mandarin, lemon, cardamom  
Heart: lavender, jasmine, cyclamen  
Base: cedarwood, musk, patchouli, tonka bean

WITH A FRUITY NOTE

PURE 478  
100478 |

Type:  
invigorating, passionate, modern

Fragrance notes:  
Head: grapefruit, yuzu, orange, green apple  
Heart: geranium, ginger, watermelon, cinnamon, cloves  
Base: cedarwood, sandalwood, vetiver, amber

PURE 482  
100482 |

Type:  
stimulating, fresh, thrilling

Fragrance notes:  
Head: lemon, yellow mandarin, pineapple, apple, bergamot, green leaves, grapefruit  
Heart: nutmeg, black pepper, saffron, ginger, orange tree, cardamom  
Base: vanilla, cedarwood, amber, dry wood, styrax, patchouli, tonka bean, Haitian vetiver

CITRUS

joyful and energetic

WITH A LEMON NOTE

PURE 57  
100057 |

Type:  
full of sun, magnificent

Fragrance notes:  
Head: plum, apple, bergamot  
Heart: cinnamon, pink pepper  
Base: vanilla, Jamaican rum

WITH AN ORANGE NOTE

PURE 93  
100093 |

Type:  
modern, vibrant

Fragrance notes:  
Head: pineapple, rosemary, bergamot  
Heart: cyclamen, lavender, jasmine, ginger  
Base: oakmoss, ivy

WITH A MANDARIN NOTE

PURE 134  
100134 |

Type:  
refreshing, captivating

Fragrance notes:  
Head: bitter orange, lemon, bergamot  
Heart: rosemary, seagrass, violet  
Base: patchouli, cedarwood, ambergris

PURE 452  
100452 |

Type:  
very refreshing, twinkling

Fragrance notes:  
Head: aldehyde, mint, citrus fruits, water notes  
Heart: neroli, cedarwood, pepper, cypress  
Base: tonka bean, vanilla, vetiver

WITH A WOODY NOTE

PURE 718  
100718 |

Type:  
dynamic, charismatic

Fragrance notes:  
Head: orange, lemon, aldehyde notes  
Heart: apple, cardamom, jasmine  
Base: vetiver, cedar wood, musk

WITH AN ORIENTAL NOTE

PURE 721  
100721 |

Type:  
transparent, positive, combative

Fragrance notes:  
Head: mandarin, melon, orange, lemon, lavender, sage, green apple  
Heart: coriander, jasmine, freesia, cardamom, cinnamon, pepper  
Base: tonka bean, cedar wood, amber, musk, cistus



PURE  
Perfume

50 ml | Fragrance: 20%





## WOODY

sophisticated and classy

### WITH A FRUITY NOTE

**PURE 55**  
100055 |

**Type:**  
light and elegant

**Fragrance notes:**  
Head: coriander, apple  
Heart: incense, Sichuan pepper  
Base: vanilla, woody notes

**PURE 472**  
100472 |

**Type:**  
expressive, luxurious

**Fragrance notes:**  
Head: bergamot, blackcurrant, lime  
Heart: apple, pineapple, rosemary, elemi resin  
Base: musk, patchouli, cedarwood

**PURE 479**  
100479 |

**Type:**  
fresh, sassy, sophisticated

**Fragrance notes:**  
Head notes: Sicilian bergamot, Italian lemon  
Heart notes: violet leaves, geranium, wild jasmine  
Base notes: white musk, oakmoss, cedarwood

### WITH A WATER NOTE

**PURE 457**  
100457 |

**Type:**  
fresh, minimalist

**Fragrance notes:**  
Head: grapefruit, mandarin, water notes  
Heart: jasmine, bay leaf  
Base: ambergris, patchouli, oakmoss

**PURE 474**  
100474 |

**Type:**  
independent, alluring

**Fragrance notes:**  
Head: mint, lemon  
Heart: cardamom, geranium, marine notes  
Base: cedarwood, musk, patchouli, sandalwood

### WITH A GOURMAND NOTE

**PURE 720**  
100720 |

**Type:**  
exceptional, appetising, coquettish

**Fragrance notes:**  
Head: pineapple, mugwort, lavender  
Heart: ginger, coconut, pepper, spicy notes  
Base: vanilla, moss, cedar wood, dry wood, gourmand notes

## CHYPRE

sensual and tempting

### WITH A WOODY NOTE

**PURE 56**  
100056 |

**Type:**  
inflaming senses, vibrating

**Fragrance notes:**  
Head: grapefruit, lavender, nutmeg flower, honeysuckle  
Heart: raspberry, heliotrope, clove  
Base: cedarwood, resin, juniper

### WITH AMBERGRIS AND MUSK NOTES

**PURE 110**  
100110 |

**Type:**  
a little brash, rebellious

**Fragrance notes:**  
Head: lavender, bergamot, cardamom  
Heart: orange blossom, lily of the valley  
Base: musk, ambergris, vanilla

### WITH AN ORIENTAL NOTE

**PURE 490**  
100490 |

**Type:**  
brave, original, sensual

**Fragrance notes:**  
Head: juniper, bergamot, red orange  
Heart: red thyme, nutmeg, sage  
Base: musk, patchouli, oakmoss

### WITH A WATER NOTE

**PURE 704**  
100704 |

**Type:**  
fresh, attractive, controversial

**Fragrance notes:**  
Head: lemon, ginger, apple  
Heart: sea breeze, lavender, geranium  
Base: vetiver, tonka bean, cedarwood, amber

**PURE 705**  
100705 |

**Type:**  
warm, charming, pure

**Fragrance notes:**  
Head: water notes, spicy notes, fruity notes  
Heart: floral notes, woody notes, green notes  
Base: musk, ambergris, moss



## FOUGERE

seductive and classic

### WITH A FERN NOTE

**PURE 43**  
100043 |

**Type:**  
energising, eye-catching

**Fragrance notes:**  
Head: mandarin, kumquat, pink pepper  
Heart: coriander, freesia, cardamom  
Base: leather notes, Jacaranda tree

**PURE 135**  
100135 |

**Type:**  
surprising, intense

**Fragrance notes:**  
Head: bitter orange, mandarin  
Heart: santolina, seagrass  
Base: ambergris, woody notes

### WITH A LAVENDER NOTE

**PURE 54**  
100054 |

**Type:**  
ambiguous, fresh

**Fragrance notes:**  
Head: mint, bergamot, rum  
Heart: cedarwood, sage, lavender  
Base: oakmoss, vetiver, suede

**PURE 473**  
100473 |

**Type:**  
fresh, noble, rebellious

**Fragrance notes:**  
Head: bergamot, pink pepper  
Heart: amber, lavender  
Base: patchouli, vetiver, dry wood

**PURE 480**  
100480 |

**Type:**  
curious, harmonious, mysterious

**Fragrance notes:**  
Head notes: lemon, bergamot, neroli  
Heart notes: geranium, hyacinth, lavender, clary sage, marigold  
Base notes: cedarwood, tonka bean, ambergris, oakmoss, musk

**PURE 483**  
100483 |

**Type:**  
mature, toned, retro

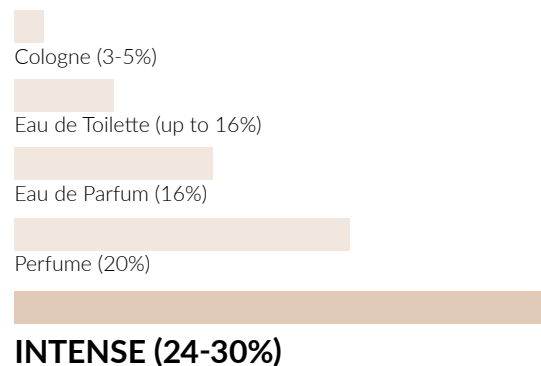
**Fragrance notes:**  
Head: apple, mandarin, orange, cinnamon, sage  
Heart: lavender, patchouli, rosemary  
Base: sandalwood, olive tree





## INTENSE Perfume

50 ml



### FOR HER

FRAGRANCE: 30%

## FLORAL

sensual and romantic

### WITH A FRUITY NOTE

INTENSE 10 | 110010 |  
a fragrance that provokes

INTENSE 17 | 110017 |  
the power of seduction

INTENSE 25 | 110025 |  
a charming composition

### WITH AN ORIENTAL NOTE

INTENSE 20 | 110020 |  
an explosion of passion

INTENSE 97 | 110097 |  
always in style

INTENSE 489 | 110489 |  
a breath of innovation

### WITH A GREEN NOTE

INTENSE 81 | 110081 |  
fresh and subtle

### WITH AN ALDEHYDE NOTE

INTENSE 21 | 110021 |  
classic

## CITRUS

joyful and energetic

### WITH A LEMON NOTE

INTENSE 33 | 110033 |  
refreshing and energetic

### WITH A MANDARIN NOTE

INTENSE 23 | 110023 |  
romantic & joyful

### FOR HIM

FRAGRANCE: 24%

## CHYPRE

sensual and tempting

### WITH A FRUITY NOTE

INTENSE 05 | 110005 |  
inflames the senses

INTENSE 16 | 110016 |  
enticing sweetness

### WITH A WOODY NOTE

INTENSE 18 | 110018 |  
slight provocation

## ORIENTAL

strong and untamed

### WITH A FLORAL NOTE

INTENSE 09 | 110009 |  
discover the secret

INTENSE 436 | 110436 |  
confidence booster

### WITH A FRUITY NOTE

INTENSE 98 | 110098 |  
business elegance

INTENSE 413 | 110413 |  
liberated

### WITH A SPICY NOTE

INTENSE 173 | 110173 |  
exotic journey

## CHYPRE

sensual and tempting

### WITH A WOODY NOTE

INTENSE 56 | 110056 |  
definitely modern

### WITH AMBERGRIS AND MUSK NOTES

INTENSE 110 | 110110 |  
liberated, manly and brave

## FOUGERE

seductive and classic

### WITH A FERN NOTE

INTENSE 43 | 110043 |  
antidote to boredom

### WITH A LAVENDER NOTE

INTENSE 473 | 110473 |  
rebellious soul

## ORIENTAL

strong and untamed

### WITH A FLORAL NOTE

INTENSE 52 | 110052 |  
the definition of a twenty-first century man

### WITH AN AMBERGRIS NOTE

INTENSE 64 | 110064 |  
the power of elegance

## CITRUS

joyful and energetic

### WITH A MANDARIN NOTE

INTENSE 134 | 110134 |  
the essence of lightness

## WOODY

sophisticated and classy

### WITH A FRUITY NOTE

INTENSE 472 | 110472 |  
impresses with its character

### WITH A WATER NOTE

INTENSE 457 | 110457 |  
stimulates to action



# PHEROMONE

## FOR HER

### FLIRT

**05**      **10**      **18**      **20**  
 120005   120010   120018   120020

**23**      **101**      **431**  
 120023   120101   120431

### SUCCESS

**01**      **33**      **81**      **98**  
 120001   120033   120081   120098

**436**      **489**  
 120436   120489

### CHARM

**34**      **413**  
 120034   120413

## FOR HIM

### SEDUCTION

**52**      **110**      **473**  
 120052   120110   120473

### SUCCESS

**64**      **134**      **472**  
 120064   120134   120472

### SELF-CONFIDENCE

**56**      **135**      **457**  
 120056   120135   120457



## Travel Perfume ATOMISER

### TRAVEL VIAL

Now, your favourite perfume can always be with you, even if you're travelling with a small amount of luggage. Comfortable and classy. The twist-up atomiser with a glass refill keeps your favourite fragrance safe while travelling. In an elegant matt aluminium container.

HEIGHT: 9,5 cm | 8 ml

GOLD | **920045** |

SILVER | **920090** |



## PHEROMONE Perfume

50 ml | Fragrance: 20%

### PHEROMONES

Pheromones are odourless substances added to perfume to reinforce their stimulating effect; they are the secret weapon, with a mission to boost attractiveness and self-confidence.



TRAVEL PERFUME ATOMISER





FEDERICO MAHORA

## Personal care products tailored to your needs

Your skin requires special attention due to stress, air pollution and the changing climate. The fast pace of life makes it easy for us to neglect it. That is why we have developed care products which, thanks to the carefully selected and concentrated ingredients, will nourish and regenerate your skin every day. It will become radiant and healthy like after the best spa treatments. The wide range of our products will ensure comprehensive skincare that will not only soothe your body but also be a true pleasure and relaxation for you.



## Anti-Ageing Face SCRUB

### ANTI-AGEING FACE SCRUB

It effectively cleanses and refreshes the skin, leaving it smoother and gently brighter. Due to corundum crystals, it thoroughly exfoliates the calloused epidermis, ensuring the effect of cosmetic microdermabrasion.

- **with liquorice which beautifully evens out the skin tone and has antioxidant properties, slowing down the skin's ageing process**
- **enriched by soothing, moisturising and regenerating active components**
- **perfectly prepares the skin for further care**
- **recommended for every skin type, especially for dry and mature skin**

50 ml | 512007 |



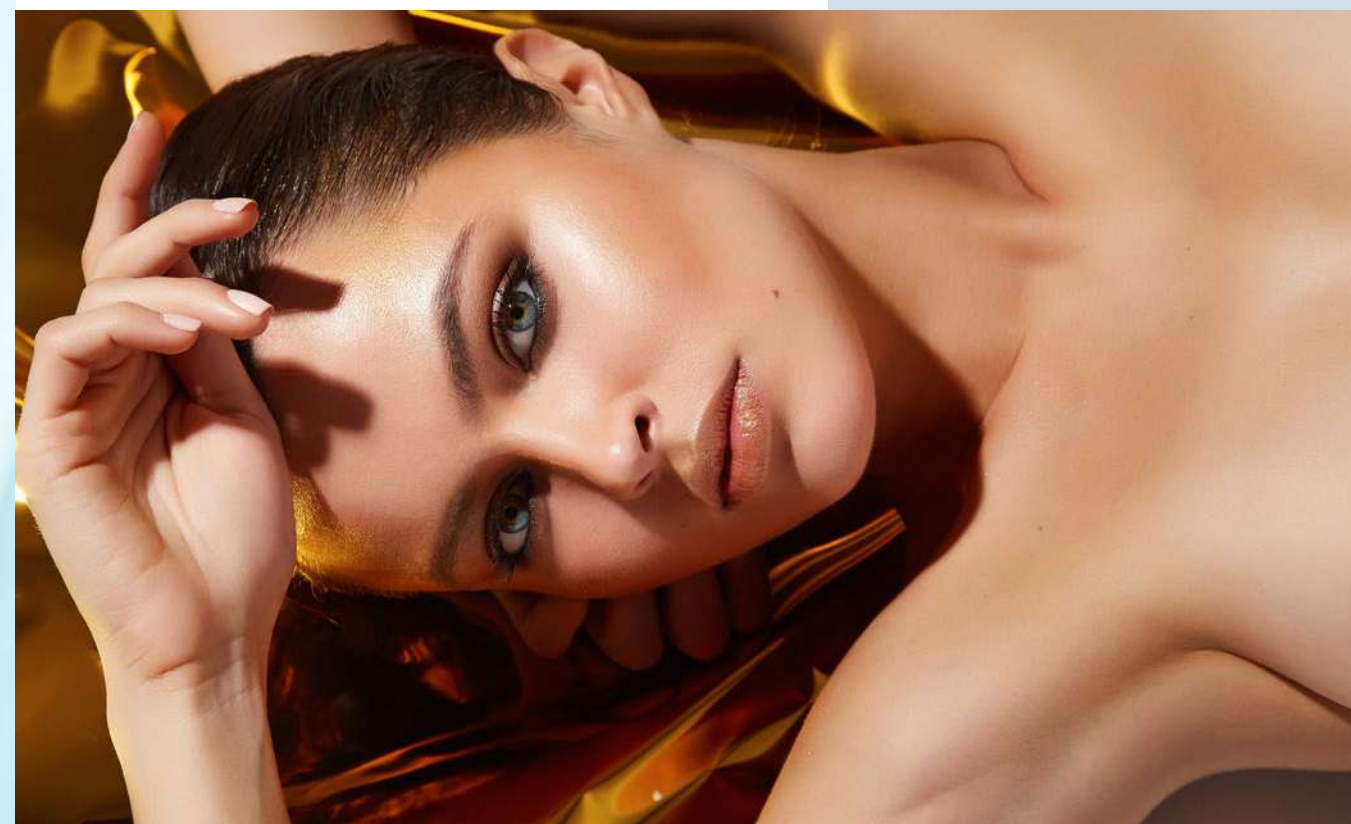
## Shimmering Body OIL

### SHIMMERING BODY OIL

It makes the skin look more radiant, silky-soft and long-lastingly moisturised. Grapeseed oil smooths, regenerates and nourishes the skin, and along with vitamin E, it slows down the ageing process. Sweet almond oil improves its flexibility, preventing the occurrence of stretch marks. Sunflower oil strengthens the lipid barrier and shows normalising properties.

- **thanks to gold particles beautifully highlights the skin tone**
- **contains a valuable cocktail of rejuvenating components**
- **quickly absorbed by the skin without leaving an oily layer on it**
- **perfect for every skin type**

100 ml | 512006 |







Anti-Ageing Day  
CREAM

ANTI-AGEING DAY CREAM

Contains illuminating colloidal gold and resveratrol from red grapes, which stimulates collagen and elastin production taking care of proper skin tension.

- **rescue for skin that needs tightening**
- **perfectly smoothes and restores skin elasticity**
- **contains nourishing shea butter and moisturising hyaluronic acid**
- **ceramide-enriched complex increases skin's natural resistance**

50 ml | **512003** |

Anti-Ageing Night  
CREAM

ANTI-AGEING NIGHT CREAM

Developed for skin renewal during sleep, when cells divide and regenerate more intensively. Thanks to the formula rich in jojoba, argan, rose and coconut oils and the ceramide complex, it deeply nourishes the skin, restoring its natural shine.

- **perfectly smoothes and tightens the skin, fighting signs of ageing**
- **with resveratrol from red grapes of strong antioxidant properties**
- **niacinamide-enriched, reduces skin roughness, evens out its tone and improves its protective barrier functions**

50 ml | **512004** |

COMPREHENSIVE SKIN CARE

FOR BETTER RESULTS USE ALL  
FOUR PRODUCTS



Anti-Ageing Eye  
CREAM

ANTI-AGEING EYE CREAM

Contains valuable biomimetic peptide complex – hexapeptide-8 that smoothes existing smile lines and effectively inhibits the formation of new ones thanks to dermo relaxing properties, and tetrapeptide-5 reduces the appearance of unattractive dark under-eye circles and puffiness around the eyes.

- **restores firmness, elasticity and smoothness to the delicate skin around the eyes**
- **fights signs of ageing and fatigue**
- **contains bisabolol from chamomile of regenerating and soothing properties**
- **for morning and evening applications**

20 ml | **512002** |

Anti-Ageing Gel  
TONER

ANTI-AGEING GEL TONER

Restores optimal pH value of skin, ideally preparing it for application of other cosmetics. Contains perfectly soothing rosewater and excellent moisturising hyaluronic acid.

- **with a mild, alcohol-free formula**
- **thanks to the unique gel consistency, it's perfectly absorbed**
- **non-sticky formula does not leave an unpleasant feeling of skin tightening**
- **refreshes and smoothes the skin**

150 ml | **512001** |

COLLOIDAL  
GOLD

ALLY IN THE FIGHT  
AGAINST THE  
EFFECTS OF TIME

- **reduces existing wrinkles and prevents the formation of new ones**
- **stimulates collagen and elastin synthesis taking care of proper skin tension and elasticity**
- **affects optimal skin hydration facilitates the penetration of active ingredients into deeper layers**
- **stimulates the exchange of microelements inside the skin contributing to its intensive nutrition**
- **restores your skin's natural glow and vitality**
- **activates skin's natural immune system increasing resistance to the harmful effects of external factors**





Regenerating & Nourishing Hand CREAM

REGENERATING & NOURISHING HAND CREAM

Created to answer the needs of dry, damaged skin of hands exposed to harmful external factors. Intensively nourishes, smoothes the skin of hands and improves the condition of nails giving them a healthy and well-groomed look.

- formula based on beta-glucan, rice oil, castor oil, allantoin

50 ml | 513007 |



Face SERUM

FACE SERUM

Recommended for regular use instead of cream, especially in the morning and evening, as well as topically on areas of the face and body that require special treatment.

- innovative, intensively acting cosmetic
- recommended for sensitive, tired and dry skin
- for every skin type

30 ml | 513002 |



3 in 1 Facial CLEANSER

3 IN 1 FACIAL CLEANSER

Exceptionally light formula with a light texture. It perfectly removes even waterproof makeup. Effectively removes dirt, and tones the skin leaving your face smooth and nourished.

- the power of ingredients: oat beta-glucan, panthenol, sweet almond oil, vitamin E, witch hazel hydrolat, rose water from damask rose
- does not require rinsing

200 ml | 513001 |



Moisturising Body BALM

MOISTURISING BODY BALM

Moisturises and nourishes the skin giving it firmness and elasticity.

- with triglycerides of caprylic and capric acid, which strengthen the skin's lipid barrier, gently nourish and prevent water loss
- for every skin type

300 ml | 513008 |



Anticellulite Body BALM

ANTICELLULITE BODY BALM

Contains a unique Anticellulite Forte complex that shapes the body and strengthens tissues. If used regularly, it gradually reduces the effect of the so-called 'orange-peel' skin.

- visibly shapes thighs, hips, buttocks and abdominal areas
- with the Centella Asiatica extract, which stimulates the production of collagen and elastin restoring skin's proper density and elasticity and preventing the formation of stretch marks

300 ml | 513009 |

EFFECTIVENESS OF β-GLUCAN

CONFIRMED BY NUMEROUS STUDIES

- provides the skin with optimum moisture
- stimulates collagen production and so it has rejuvenating and anti-ageing properties
- regenerates dry skin, soothes irritations, facilitates the healing processes
- tightens and makes the skin more elastic, firmer and smoother
- it is a natural factor protecting against UV radiation





## Perfumed SOAP BAR

### PERFUMED SOAP BAR

Perfectly cleanses, moisturises, oils and nourishes the skin thanks to its rich formula. It softens calloused epidermis and leaves a delicate protective film.

- contains glycerine, argan and avocado oils as well as mango and shea butter
- with carbon for antibacterial and anti-inflammatory properties
- with a beautiful scent of PURE ROYAL 900 perfume

100 g | 524900 |



NEW

### HARMONIOUS FRAGRANCES

Each of the cosmetics in this series has a unique fragrance that integrates harmoniously with the most popular PURE and PURE ROYAL perfumes. You will definitely find your favorite among them.

## Perfumed SHOWER GEL

### PERFUMED SHOWER GEL

Carefully cleanses the body leaving the scent of the most beautiful perfumes.

- pampers the senses with a silky texture
- contains moisturising and regenerating panthenol

300 ml



FOR HER:

18 (507018) | 20 (507020)  
33 (507033) | 81 (507081)  
171 (507171) | 173 (507173)  
366 (507366) |  
809 (507809) |

FOR HIM:

52 (507052) | 134 (507134)  
199 (507199) | 472 (507472)  
473 (507473) | 815 (507815)  
823 (507823)

UNISEX:

## Perfumed Body BALM

### PERFUMED BODY BALM

Envelops the skin with a scent of the most beautiful perfumes. It contains moisturising and active regenerating ingredients.

- with vitamin E, B5 and allantoin

300 ml



FOR HER:

18 (506018) | 20 (506020) | 33 (506033)  
81 (506081) | 173 (506173) | 366 (506366)  
| 809 (506809)

UNISEX:



COMING  
SOON



Perfumed  
**ANTIPERSPIRANT**  
Roll-On

PERFUMED ANTIPERSPIRANT ROLL-ON

Thanks to a combination of antiperspirant properties and fragrance composition, it ensures a sense of comfort and freshness.

- **eliminates unpleasant odour caused by excessive sweating**
- **do not leave marks on clothes**
- **alcohol-free formula**
- **wide range of fragrances**

50 ml

FOR HER:  
**18 (508018) | 20 (508020) | 33 (508033)**  
**81 (508081) | 173 (508173)**

FOR HIM:  
**52 (508052) | 134 (508134) | 199 (508199)**  
**472 (508472) | 473 (508473)**



Fragrance-Free  
**ANTIPERSPIRANT**  
Roll-On Unisex

FRAGRANCE-FREE  
ANTIPERSPIRANT ROLL-ON

Universal roll-on can be combined with any perfume scent. It provides long-lasting protection against unpleasant odour.

- **for women and men**
- **does not leave marks on clothes**
- **alcohol-free formula**

50 ml | **508000**



Perfumed  
Body MIST

PERFUMED BODY MIST

Is like a sea breeze on your skin, providing an immediate refreshing effect. It leaves a beautiful scent of PURE parfum on the skin.

- contains an exquisite emollient – coconut oil dispersed in water with a skincare effect
- ideal for hot days as an alternative to perfume

150 ml

AVAILABLE FRAGRANCES:  
18 (521018) | 20 (521020)  
372 (521372) | 489 (521489)



Perfumed  
Body SPRAY

PERFUMED BODY SPRAY

It leaves a captivating scent on the skin that lasts for a long time. It is perfect as an alternative to perfume or a layering cosmetic to intensify their aroma.

- its scent resembles the most beautiful PURE ROYAL compositions

150 ml

FOR HER:  
366 (523366) | 809 (523809)

FOR HIM:  
199 (523199)

UNISEX:  
900 (523900) | 910 (523910)  
913 (523913)







# SHAVING FOAM

## For Women

### SHAVING FOAM FOR WOMEN

Created specifically for delicate, feminine skin. It leaves it soft and pleasant to the touch. Effectively softens hair ensuring precise and comfortable shaving.

- enriched with allantoin, which soothes and reduces the risk of redness
- ideal for legs and the sensitive armpit and bikini areas
- matches PURE Parfum 18

250 ml | 516018 |



# AFTERSHAVE

### AFTERSHAVE

Intensely fragrant aftershave that is a great finish to a perfect shave. Cooling menthol brings a pleasant refreshment and allantoin soothes irritated skin.

- with allantoin which soothes skin and eliminates the tight skin sensation

100 ml

AVAILABLE FRAGRANCES:  
52 (509052) | 134 (509134)  
199 (509199)



# AFTERSHAVE

## BALM

### AFTERSHAVE BALM

Contains ingredients that soothe and moisturise the skin on your face which is irritated after shaving, and gets easily absorbed, providing the feeling of comfort throughout the day.

- with nourishing macadamia oil
- with regenerating panthenol

50 ml

AVAILABLE FRAGRANCES:  
52 (510052) | 134 (510134)  
199 (510199)



# SHAVING

## FOAM

### SHAVING FOAM

The appropriate consistency of the creamy foam effectively softens your stubble making the shaving process easier. The formula, enriched with mint extract, pleasantly refreshes your facial skin.

- ensures a precise and comfortable shave
- with refreshing mint extract
- matches PURE Parfum 134

250 ml | 516134 |



# NECTAR Body Wash

## NECTAR BODY WASH

Soft and fragrant skin thanks to a gentle fluid with a delicate, oily consistency. The Nectar cleanses and nourishes the body.

- **with honey extract, lactic acid and allantoin which perfectly moisturise the body**
- **with extract of opuntia, pear and Passiflora**

220 ml | 515005 |



## LIQUID HONEY CARE

Thanks to its moisturizing and regenerating properties, honey is perfect for dry and dehydrated skin, nourishing it and making it more elastic and radiant. In addition, honey makes skin less prone to irritation and resistant to the negative influence of external factors.



# Sugar Body SCRUB

## SUGAR BODY SCRUB

Thoroughly cleanses, smoothes and intensively nourishes the skin. Restores its softness and elasticity.

- **with argan oil, which protects the skin from drying out and delays the ageing processes**
- **with sweet almond oil of strengthening properties, rich in magnesium, potassium, zinc and vitamins: E, PP and B complex**

150 ml | 515003 |



# Body PUDDING

## BODY PUDDING

Long-lasting and intense moisturisation as well as satin-like softness. Wonderfully fragrant butter with an exceptionally fluffy texture. It spreads pleasantly and absorbs quickly.

- **with sweet almond oil and honey extract, which provide perfect moisturisation**
- **with shea butter, which nourishes the skin**

130 ml | 515004 |



# Natural Sugar BODY SCRUB

## NATURAL SUGAR BODY SCRUB

Honey gives a dose of vitamins and oils to skin that lacks radiance. Thanks to vitamin E and soya as well as sunflower oil, it has anti-ageing properties. It contains shea butter which perfectly regenerates the damaged epidermis and protects it against harmful external factors.

- cleanses, brightens and rejuvenates the skin
- with almond oil preventing the occurrence of stretch marks
- to be applied 1-2 times a week

200 ml | 515006 |



## HONEY KING

Manuka honey is said to be the healthiest honey in the world – no wonder as it is a true richness of vitamins, minerals, sugars and flavonoids that benefit both the internal body and skin – moisturising, smoothing, soothing and revitalising it. It is unique not only due to its properties, but also due to the manner of obtaining it. This precious component is found in the nectar and pollen of flowers of tea trees growing solely in New Zealand.

# Natural BODY PUDDING

## NATURAL BODY PUDDING

Daily cocktail of components for a younger look. It contains lychee, coconut oil and caffeine, slowing down the skin ageing process as well as regenerating-lubricating shea butter. Thanks to allantoin and panthenol, it softens and soothes irritations, speeding up its regeneration.

- moisturises and makes the skin more flexible, restoring its youthful look
- with avocado oil that improves its tightness
- to be applied in the morning and in the evening

200 ml | 515007 |





COMING  
SOON

Multifunctional **GEL**

MULTIFUNCTIONAL GEL

Contains nearly 100% of its moisturising and revitalising Aloe Vera from organic plantations in Mexico, as well as soothing allantoin and panthenol. It is easily absorbed and leaves no oily film.

- perfect for face, body and hair
- for all skin types
- a must-have in every bag
- with a pleasant, fresh fragrance
- suitable for vegans

200 ml | 514010 |



99%  
ALOE

NEW



**BODY LOTION**  
nourishes and firms

**FOOT AND HAND EMULSION**  
reduces dryness and protects

**AFTER SUN**  
soothes and regenerates

ONE PRODUCT,  
MULTIPLE FUNCTIONS

**FACE SERUM**  
smoothes and brightens

**AFTER-SHAVE CREAM**  
soothes irritations and redness

**HAIR MASK**  
intensively moisturises





## Facial Cleansing FOAM

### FACIAL CLEANSING FOAM

Gentle but effective and rich in moisturising ingredients. Removes makeup and dirt, leaving your skin feeling refreshed and soothed.

- **very efficient (one pump = cleanse whole face)**
- **ideal for everyday care**

150 ml | **514009** |



## Facial TONER

### FACIAL TONER

Restores the right pH value of the skin and provides the proper level of moisture. In the form of a delicate mist.

- **with a convenient atomiser**
- **alcohol-free**

150 ml | **514003** |



## Facial GEL-CREAM

### FACIAL GEL-CREAM

Quickly absorbed. Intensely moisturises, nourishes and soothes the skin. It provides a velvety softness and a fresh healthy look.

- **an exceptionally light formula**
- **perfect to wear under makeup**

50 ml | **514008** |

## Enzymatic Facial PEEL

### ENZYMATIC FACIAL PEEL

A perfect alternative to traditional manual scrubs. It cleanses and smooths the skin, making it refreshed and glowing. It contains a pineapple extract, rich in bromelain – an enzyme that exfoliates dead cells and evens out the skin tone.

- **regenerates and soothes thanks to containing aloe and allantoin**
- **with glycerine that ensures the right level of nutrition**
- **perfect for every skin type, also for dry and dehydrated skin**

50 ml | **514006** |







## Rich Revitalizing Facial MASK

### RICH REVITALIZING FACIAL MASK

It makes the complexion smooth and elastic, regains its glow and fresh look. This face mask contains aloe, hyaluronic acid and glycerine, which ensure long-lasting hydration and slows down the ageing process.

- **creamy consistency**
- **contains blueberry and blackcurrant extracts, which provide a firming and elasticising effect**
- **with avocado oil and shea butter, which nourish the skin and strengthen its hydrolipid layer**
- **perfect for all types of skin, especially for dry and dehydrated skin**

50 ml | 514007 |



## Peel-Off Facial MASK

### PEEL-OFF FACIAL MASK

Gently exfoliates dead skin, perfectly cleanses and tightens pores. It prevents shininess and provides softness, elasticity and the feeling of pleasant refreshment.

- **with soothing jasmine extract and Enantia chlorantha tree bark extract that regulates sebum secretion**
- **for normal, combination and oily skin**

50 ml | 514002 |

## Intimate Hygiene WASH

### INTIMATE HYGIENE WASH

Gently cleanses and provides a sense of purity and freshness. Strengthens the natural protective barrier and restores its proper pH.

- **soothes irritation, moisturises and reduces the risk of infection**
- **with a hygienic pump**

200 ml | 514005 |







## Cleansing Antibacterial HAND GEL

### CLEANSING ANTIBACTERIAL HAND GEL

Prevents the spread of bacteria on hands' surface, helping to protect it. It contains aloe extract, as well as panthenol, which has a caring effect.

- cleans the hands without using water
- ideal for outdoor – for travel, work or a walk

50 ml | **501022** |

## SOAP Bar

### SOAP BAR

Perfectly foaming and thoroughly cleansing the entire body. Contains valuable avocado oil rich in vitamins, unsaturated fatty acids and amino acids.

- with a pleasant, delicate fragrance
- with moisturising glycerine and nourishing shea butter
- with olive oil that makes the skin silky soft and smooth
- does not contain colourants

100 g | **501021** |



## Complete Care SHOWER GEL

### COMPLETE CARE SHOWER GEL

Perfectly cleanses the skin leaving the feeling of softness. For all skin types, even for children from 3 years of age. Contains almond oil, which prevents the skin from lack of moisture and intensively moisturises and smoothes the skin.

- creates a delicate foam and contains gentle washing ingredients
- with panthenol and allantoin of soothing properties

250 ml | **501002** |



## Complete Care CREAM

### COMPLETE CARE CREAM

With its light, delicate formula, it is also suitable for sensitive skin and children from 3 years of age. Leaves a delicate protective film. With ingredients that optimally hydrate and smooth the skin of the face, body and hands.

- contains coconut and avocado oils which strengthen the skin's protective barrier
- with panthenol and allantoin, which soothe and have anti-inflammatory properties
- with a complex of vitamins C and E, which slows down the ageing process

30 ml | **501001** |



## Deeply Moisturizing Body LOTION

### DEEPLY MOISTURIZING BODY LOTION

The rich formula contains, among others, almond oil, coconut oil, panthenol, allantoin and bisabolol, makes the skin deeply moisturised, nourished and increases its elasticity. Perfectly smoothes rough and dry skin, making it soft and silky.

- thanks to a carefully selected formula, it subtly oils the skin, providing with the immediate feeling of comfort and moisture
- has a soothing and relieving effect, protects the skin from drying out

250 ml | **501003** |



## Regenerating HAND SERUM

### REGENERATING HAND SERUM

Thanks to its rich, concentrated formula it provides excellent care for your hands. It contains aloe vera juice, shea butter, olive oil, glycerine and allantoin, which fantastically moisturise and nourish the skin, visibly improving its condition.

- **rescue for damaged and dry hands**
- **absorbs quickly without leaving a oily film**
- **effectively soothes the skin after hand disinfection with alcohol products**
- **dermatologically tested**

100 ml | 501025 |



NEW



## Smoothing HAND PEELING

### SMOOTHING HAND PEELING

Give your hands' skin smoothing therapy that will make it incredibly soft, hydrated and more elastic. Thanks to volcanic pearlite and powdered walnut shell the exfoliator gently removes dead cells' stimulating their restoration.

- **perfectly smooths even the driest and most chapped hands**
- **is an ideal preparation of the skin for further phases of the skincare routine**
- **with panthenol, allantoin and triglyceride of calming properties**

100 ml | 501005 |



## Nourishing HAND CREAM

### NOURISHING HAND CREAM

Due to its rich formula, this cream visibly improves the condition of the hands. The synergistic combination of urea and glycerine provides intensive and long-lasting hydration. Moreover, it contains sweet almond oil and shea butter, which have exceptional nourishing, regenerating and oiling properties.

- **easily spread**
- **with panthenol and allantoin that soothe the chapped skin**
- **leaves a delicate protective film that prevents drying of the skin**

100 ml | 501004 |





Exfoliating  
FOOT PEEL

EXFOLIATING FOOT MASK

Thanks to AHA/BHA acids perfectly regenerates damaged epidermis, and a rich complex of natural ingredients, urea and allantoin additionally moisturises and rebuilds the skin. Thanks to a special formula, it adjusts the intensity of the treatment to the individual needs of the skin.

- **effectively removes calluses**
- **contains extracts of honey, opuntia, pear, passion fruit, lemon, grape and pineapple**
- **leaves feet perfectly smooth**
- **use once a month**

2 × 20 ml | **501024** |



NEW

Refreshing  
ANTIPERSPIRANT FOOT SPRAY

REFRESHING ANTIPERSPIRANT  
FOOT SPRAY

Developed on the basis of refreshing lemongrass oil. It helps take care of the skin that is exposed to bacteria and fungi. Excellent for everyday use.

- **reduces perspiration**
- **prevents an unpleasant aroma**
- **ensures a long-lasting feeling of freshness**
- **does not contain alcohol**

150 ml | **501019** |



Ultra Moisturizing  
FOOT CREAM

ULTRA MOISTURIZING FOOT CREAM

It strongly moisturises even very dry feet. Thanks to its softening and smoothing ingredients, it is a perfect ally in your skincare routine for cracked heels. If used systematically, it reduces the thickened epidermis.

- **with a high urea content**
- **with nourishing beeswax, shea butter and macadamia oil**
- **makes feet soft and supple again**

75 ml | **501020** |



Softening  
FOOT SCRUB

SOFTENING FOOT SCRUB

It effectively removes calloused skin. Thanks to the content of allantoin and glycerine, it visibly smooths and softens rough and dry feet. Shea butter and vitamin E, with their moisturising qualities, will give your feet a healthy look.

- **developed from exfoliating, natural granules from apricot pits, walnut and almond shells**
- **with a refreshing and relaxing wild water mint extract**

75 ml | **501017** |



ULTRA MOISTURISING  
TREATMENT

Urea is one of the key ingredients of the NMF – natural moisturising factor in the skin – and an excellent humectant, i.e. a water-retaining substance, the content of which decreases with age in the human body. A high, ten percent concentration of urea also has keratolytic effects – it facilitates the exfoliation of the calloused layer of the skin by softening and smoothing it, and improves its permeability, which enables the better absorption of other active substances contained in the product. You can walk through life with confidence with such moisturised and smooth feet.





Volume  
SHAMPOO

VOLUME SHAMPOO

Gives bounciness to your hair and optically increases its volume. The carefully selected ingredients include, among others, panthenol, which improves hair hydration, and a wheat protein derivative – an ingredient providing softness.

- **valuable plant extracts cleanse and soothe the scalp**
- **active ingredients prevent your hair from picking up static, make it easy to comb and add exceptional lightness**

230 ml | 501010 |



Colored Hair  
SHAMPOO

COLORED HAIR SHAMPOO

Intense and deep colour for an incredibly long time. This shampoo perfectly nourishes your hair simultaneously preventing it from getting dry. It contains a ginkgo biloba extract, which strengthens your hair, and a UV filter, which helps protect it from the negative effects of sun radiation including the fading of the hair colour.

- **makes your hair shiny and healthy looking**
- **thanks to milk proteins your hair is incredibly soft to the touch and easy to style**

230 ml | 501013 |



Men's  
SHAMPOO

MEN'S SHAMPOO

Designed for everyday care of men's scalp and hair. It contains keratin, which strengthens and restores hair structure, and silk, which creates a thin film on its surface protecting the hair from the harmful effects of external factors.

- **ingredients such as panthenol and argan oil, which is rich in vitamin E, prevent the hair from getting dry and provide it with excellent nourishment**

230 ml | 501011 |



Dry And Damaged  
Hair SHAMPOO

DRY AND DAMAGED HAIR SHAMPOO

It is dedicated to hair that requires intensive regeneration. Meticulously selected ingredients such as aloe vera juice, glycerine and sodium hyaluronate excellently hydrate your hair. A specially developed formula makes it easy to comb your hair and prevents it from picking up static and breaking.

- **quick and intensive regeneration of hair damaged by colouring, blow-drying or straightening**
- **a unique combination of active ingredients makes your hair incredibly soft, smooth and more flexible**

230 ml | 501012 |



Dry And Damaged  
Hair CONDITIONER

DRY AND DAMAGED HAIR CONDITIONER

A unique formula helps regenerate even the most damaged hair, giving it a beautiful, healthy look. Thanks to its creamy formula, rich in active ingredients such as panthenol or sodium hyaluronate, it deeply hydrates and regenerates your hair protecting it from getting dry.

- **highly valuable shea butter intensively nourishes your hair, making it smooth and shiny**
- **requires rinsing**
- **for better results we recommend using it with the Dry and Damaged Hair Shampoo**

180 ml | 501015 |



## Sensitive TOOTHPASTE

### SENSITIVE TOOTHPASTE

Reduces the discomfort associated with exposed dentin tubules. It is a perfect solution for the issue of sensitive teeth and gums.

- reduces the discomfort experienced during eating and drinking
- the delicate toothpaste formula protects sensitive teeth, additionally helping maintain strong gums
- designed for adults

75 ml | 501006 |

## Whitening TOOTHPASTE

### WHITENING TOOTHPASTE

Dazzle others with your beautiful, radiant smile. Thanks to the perfectly selected active ingredients, after just two weeks of use, the toothpaste ensures a visible effect of restored natural whiteness of the teeth.

- removes discolouration caused by some types of food products – such as coffee or tea – and smoking
- a rich formula consisting of, among others, sodium fluoride which effectively mineralises tooth enamel, making it stronger and reduces the risk of decay
- designed for adults

75 ml | 501008 |



EFFECTIVELY  
REDUCES  
DISCOMFORT  
DURING THE  
CONSUMPTION  
OF HOT AND  
COLD FOOD



RESTORES  
NATURAL  
WHITENESS  
OF THE TEETH  
AFTER JUST  
TWO WEEKS  
OF USE

## TOOTHPASTE Gums Protection

### GUMS PROTECTION TOOTHPASTE

Thanks to a specialised formula developed by experts, it ensures comprehensive aid for people dealing with the problem of sensitive gums.

- triple action: it soothes irritated gums, regenerates them and protects them from micro-damage
- provides excellent periodontal preventive care
- designed for adults

75 ml | 501007 |



3 IN 1 TRIPLE  
ACTION FOR  
STRONG GUMS:  
IT SOOTHES,  
REGENERATES  
AND PROTECTS

## Mild Mint MOUTHWASH

### MILD MINT MOUTHWASH

Thanks to its highly specialised formula, it is a perfect addition to your everyday oral cavity care routine. It effectively reaches places that are not easily accessible to a toothbrush, helping you take excellent care of your oral cavity. The mild mint flavour gives you the feeling of a clean mouth and fresh breath for a long time. It does not contain artificial colourants.

- prevents the formation of plaque – one of the key causes of decay, periodontitis and tartar
- ensures fresh breath for a long time
- does not contain alcohol
- designed for adults

500 ml | 501009 |

A UNIQUE  
TRANSPARENT  
FORMULA  
WITHOUT  
ARTIFICIAL  
COLOURANTS  
OR ALCOHOL





A woman with voluminous, curly brown hair is shown from the chest up. She is wearing a bright red top and a wide, black, studded bracelet on her left wrist. Her makeup is dramatic, featuring thick black eyeliner, long black lashes, and bright pink lipstick. She is looking down and slightly to the side, with her left hand resting near her chin. The background consists of bold, black and white horizontal stripes.

# FEDERICO MAHORA MAKEUP

## Express yourself

Makeup has been known since antiquity. It plays many different roles corresponding to the changing nature of women. Sometimes it helps to highlight your beauty and add confidence, other times it is used to create a completely new image, matching your mood and the circumstances. Thanks to the fantastic Federico Mahora cosmetics, your makeup will be in line with the latest trends. Do not be afraid to experiment – play with colours and turn the makeup application routine into oodles of fun.

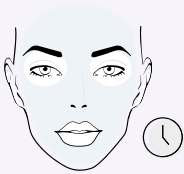
Colour visualisations of makeup cosmetics (products) are for reference only. Actual shades may slightly differ from those shown in the pictures. It depends on the light, print quality and monitor settings.





## 6 STEPS

to perfect skin



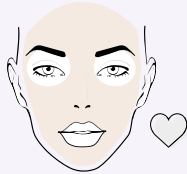
### STEP 1 BASE

- extends the longevity of your makeup



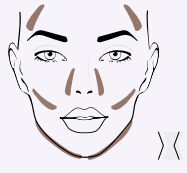
### STEP 4 POWDER

- provides a matte finish
- sets your makeup



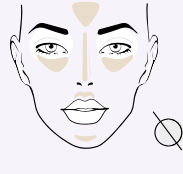
### STEP 2 FOUNDATION

- evens out your skin tone
- conditions your skin



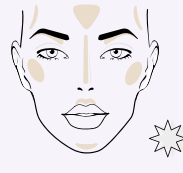
### STEP 5 BRONZER

- sculpts the shape of your face



### STEP 3 CONCEALER

- hides the imperfections of your skin



### STEP 6 HIGHLIGHTER

- gives your skin a youthful glow

USE UNDER MAKEUP OR  
AS AN INDEPENDENT  
PRODUCT



## Multifunctional PRIMER SPF 30

MULTIFUNCTIONAL PRIMER SPF 30

A creamy emulsion with beige shade gives the skin a beautiful, healthy look and gently evens skin tone. Perfectly smooths the complexion, while helping to protect against harmful effects of UV rays.

- exceptionally light formula
- does not accumulate in wrinkles, does not overload or dry the skin
- enriched with chamomile water, aloe vera and calendula extracts
- gluten-free
- beautiful fragrance

30 ml | 601312 |



IT MATTIFIES  
AND EVENS OUT  
IMPERFECTIONS

## Silicone BASE

SILICONE BASE

Makes your makeup last longer. Mattifies and ensures a fresh look for a long time. Makes the skin perfectly smooth and ensures that pores and fine lines are less noticeable.

- with vitamin C and E complex which has antioxidant properties
- recommended for the skin which requires mattifying and has a tendency to shine

15 ml | 601301 |



# IDEAL COVER EFFECT

## Foundation

### IDEAL COVER EFFECT FOUNDATION

Provides a semi-matte finish and a perfect look, without the mask effect, for an unbelievably long time. Due to the light and silky consistency, it spreads evenly. It contains valuable B3 and E vitamins.

- **humidity-resistant**
- **covers all imperfections**
- **perfectly evens skin tone**
- **highly pigmented**
- **very efficient – a thin layer evenly covers and gently mattifies**

30 ml



NUDE  
601105 |



SOFT BEIGE  
601106 |



OLIVE BEIGE  
601107 |



IDEAL FOR ALL SKIN TYPES

# BLUR EFFECT

## Lifting Foundation

### BLUR EFFECT LIFTING FOUNDATION

Superbly covers imperfections and evens out your skin tone. It guarantees a flawless, youthful and natural look without the mask effect. Thanks to its light, liquid consistency, it spreads very easily.

- **prevents shiny-looking skin**
- **gives a soft-focus effect**
- **creates an immediate visual lifting effect**
- **suitable for vegetarians**

30 ml



LIGHT NUDE  
601204 |



CLASSIC BEIGE  
601205 |



SATIN SAND  
601206 |



PERFECT FOR MATURE SKIN

## LONG-LASTING HUMIDITY-RESISTANT FORMULA

- perfect for hot days
- recommended for active people
- allows you to enjoy a perfect look even during a workout
- ideal for big events

## THE BLUR EFFECT

Also referred to as the soft-focus effect, this is a well-known term in the field of photography. It allows to smooth out all the sharp contours and blur the image in the picture so that the model's face looks flawless and perfectly smooth. In the world of cosmetics, it offers strikingly similar results. Thanks to the ingredients with unique optical properties, it creates a layer on the surface of the skin which reflects and diffuses light evenly, masking the imperfections of your skin.



## GLOWING DROPS 3D Liquid Highlighter

### GLOWING DROPS 3D LIQUID HIGHLIGHTER

Immediately illuminates your skin and gives it an extra glow. Silky and liquid formula. It does not smudge and is not heavy on the skin.

- **guarantees phenomenally fresh and radiant look**
- **optically rejuvenates the skin and eliminates signs of fatigue**
- **ideal for the strobing makeup technique**
- **with a formula containing wheat germ oil and betaine**
- **to be used in spots on various parts of your face and body**
- **can be applied both under the foundation, or add a drop to your favourite foundation and blend on your hand directly before the application**
- **with a pipette for easy dosing**
- **suitable for vegetarians**

10 ml | 601311 |



### HOW TO APPLY MAKEUP USING THE STROBING TECHNIQUE

It will illuminate your forehead

It will optically enlarge your eyes

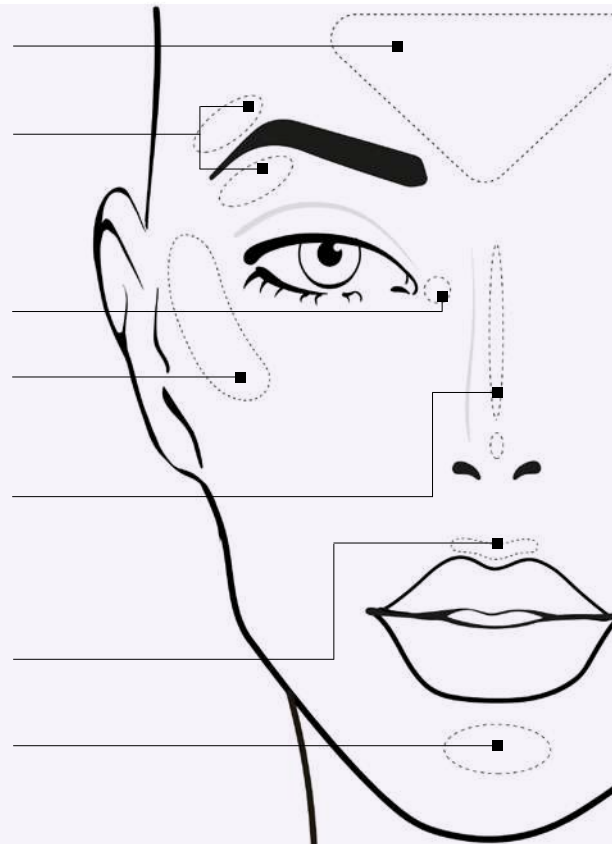
It will make your eyes look brighter

It will accentuate your cheekbones

It will make your nose appear smaller

It will make your lips look noticeably fuller

It will highlight your chin and enlarge the lower lip



## Makeup Setting SPRAY

### MAKE UP SETTING SPRAY

Creates an invisible coating to protect your makeup. Doesn't leave your skin feeling sticky or tight.

- **refreshes and adds a healthy glow throughout the day**
- **in the form of light, moisturising mist**

100 ml | 609003 |





How to create  
MIX & MATCH sets

STEP 1

SELECT

- ideal palettes for you, adjusted to your needs



SMALL



LARGE



XL



XXL

STEP 2

COMBINE

- any inserts



EYESHADOWS



BLUSHES AND HIGHLIGHTERS

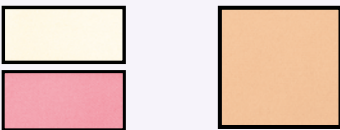


POWDERS

STEP 3

EXCHANGE

- whenever you want – experiment with shades and play with the arrangement of the inserts



PALETTES

PALETTES

Ideal for those who like things to be practical and easy to use. They will be your place for all the products needed to create perfect makeup and store all your ideas. The sky is the limit.



A CONVENIENT MAGNETIC LOCK IS A GREAT SOLUTION BOTH DURING A TRIP AND IN EVERYDAY USE

Palette  
SMALL

SMALL PALETTE

608101 |

EXAMPLE



THIS PALETTE CAN STORE:

4 x | 2 x | 1 x

Palette  
LARGE

LARGE PALETTE

608102 |

EXAMPLE



THIS PALETTE CAN STORE:

8 x | 4 x | 2 x

Palette  
XL

XL PALETTE

608120 |

EXAMPLE



THIS PALETTE CAN STORE:

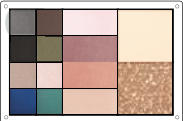
16 x | 8 x | 4 x

Palette  
XXL

XXL PALETTE

608121 |

EXAMPLE



THIS PALETTE CAN STORE:

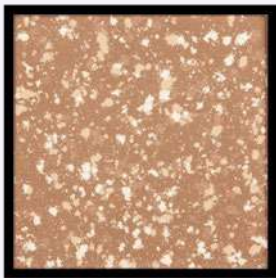
24 x | 12 x | 6 x







1



2

BRONZING-  
HIGHLIGHTING  
POWDER



3

HIGHLIGHTING  
POWDER

## POWDER

### POWDER

Provides a silky finish and perfectly sets the make-up.

- **does not clog pores**
- **allows skin to breathe**
- **for different skin types**

14 g

**1** GOLDEN TAN  
**602001** |

**2** CINNAMON ROLL  
**602019** |

- revives your skin
- provides a natural tan effect
- with illuminating particles

**3** RADIANT GLOW  
**602018** |

- delicately illuminates your skin
- provides an effect of youthful and fresh skin
- gives a radiant and well-rested look



THE ONE  
**602102** |



AFTERGLOW  
**602103** |

## HIGHLIGHTER

### HIGHLIGHTER

One-touch of the brush is enough to make a face shine and glow with all the brightness.

- **provides a natural effect of well-rested skin**
- **glamour-style makeup**
- **brings out the natural radiance of your skin**

6.5 g



COCKTAIL PEACH  
**602202** |



DESIRE\*  
**602203** |



CHARISMA\*  
**602201** |

## BLUSH

### BLUSH

Thanks to a wide range of tones, you will certainly find the perfect blush for you.

- **energised skin effect**
- **ensures healthy skin tone**
- **spreads very easily**

6.5 g

\* Glittery





SELECT AN EYESHADOW THAT IS PERFECT FOR YOUR EYE COLOUR



BLUE OR GREY

- **contrasting shades:** shades of brown, copper, beige, gold, orange, peach, coral, violet, pink
- **harmonious shades:** shades of grey, blue, navy blue, graphite, silver



GREEN

- **contrasting shades:** shades of violet, pink, purple, coral
- **harmonious shades:** shades of green, beige, gold, copper, brown, grey, graphite



HAZEL OR BROWN

- **contrasting shades:** shades of navy blue, blue, green, turquoise, violet, purple, pink
- **harmonious shades:** shades of brown, beige, copper, gold, orange, coral

EYESHADOW

EYESHADOW

2.5 g, 2.6 g, 2.8 g, 3 g, 3.5 g



DESERT GLOW  
LIMITED EDITION



MIRAGE  
3 g | 606085



CAMEL  
3 g | 606084



CLEOPATRA  
3.5 g | 606085



PHARAOH  
3.5 g | 606082

GLAMOUR WITH  
PARTICLES EFFECT



SHOWTIME  
2.5 g | 606009

SATIN EFFECT



DOLCE VITA  
2.5 g | 606015



GALAXY  
2.8 g | 606010



COPPER GODDESS  
3 g | 606016

SHINY EFFECT



MOONDUST  
2.8 g | 606021



GOLDEN RULE  
2.5 g | 606011



LOVELY ORCHID  
2.6 g | 606074

MATTE EFFECT



FIRST LOVE  
3 g | 606012



ANONYMOUS  
2.8 g | 606022



PEACH PASSION  
2.5 g | 606002



NAUTICA  
2.5 g | 606017



CHERRY COLA  
3 g | 606006



Eye Zone CREATOR

EYE ZONE CREATOR

This multi-functional tool for applying eye makeup will allow you to become the creator of a captivating look.

- instant, and at the same time perfect makeup
- resistant to moisture
- will fit in any cosmetic bag
- for multiple use: just wash it under running water, dry and use again

606066 |



Eyebrow CREATOR

EYEBROW CREATOR

If eyes are the windows to the soul, then eyebrows are their frame. Have your eyebrows looking their best with the Eyebrow Creator.

- accentuates the colour and shape of your eyebrows
- doses an ideal quantity of the shadow
- easy to use
- handy and compact

607025 |



EYESHADOW Refill

EYESHADOW REFILL

Brown shimmer or shiny silver? Or both at once? Select your favourite eyeshadows and combine them with the professional Eye Zone Creator.

- in three trendy shades
- long-lasting formula
- very easy to apply

0.8 g

- 1 CREAMY FLASH 606060 |
- 2 SILVER SHINE 606063 |
- 3 TAUPE GLOW 606064 |



EYEBROW SHADOW Refill

EYEBROW SHADOW REFILL

Thanks to those three universal shades you can easily choose the colour that suits your type of beauty.

- ensures a natural effect
- accentuates the eyebrows beautifully
- very easy to apply
- shapes the eyebrow ridges perfectly

0.8 g

- 1 LIGHT BROWN 607022 |
- 2 PURE BROWN 607024 |
- 3 ALMOST BLACK 607023 |



# LONG-LASTING SPARKLE

## Cream Eyeshadow

### LONG-LASTING SPARKLE CREAM EYESHADOW

Leaves a captivating, intense shine on the eyelids. Thanks to the creamy-powder consistency, it is easy to apply and does not accumulate in skin creases.

- **extremely efficient and durable, it lasts all day**
- **quickly adheres to the eyelids, giving them a stunning glow**
- **non-sticky formula does not flake off**

3.5 g



1

2

3



1

COPPER GRACE  
606077 |



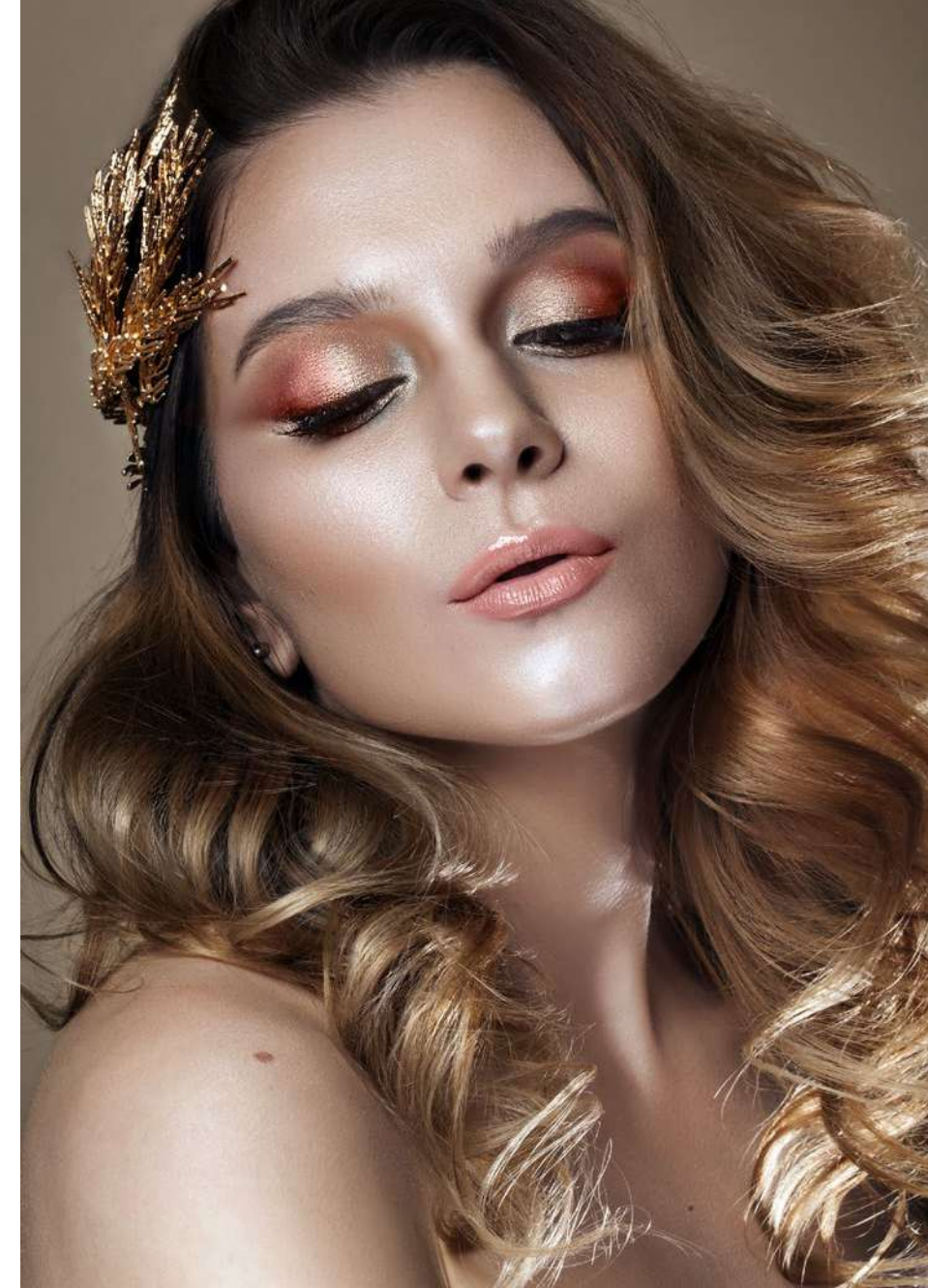
2

ICE PALACE  
606075 |



3

GOLDEN TREASURE  
606076 |



HAVE FUN WITH  
YOUR MAKEUP

Modify colour saturation by applying another layer.

ENJOY  
THE CONVENIENCE  
OF USE

Use your finger to apply a small amount of the shadow to your eyelid.



# Long-Lasting KAJAL EYE PENCIL

## LONG-LASTING KAJAL EYE PENCIL

Have a charming, deep and beautiful look. Apply the eye pencil along the waterline of your eye to optically enlarge and highlight it, reducing the signs of tiredness.

- long-lasting – up to 12 hours
- will optically enlarge your eyes and give your look a rested and fresh appearance
- it is exceptionally durable and has a non-smear formula
- with a convenient built-in sharpener
- ophthalmologist tested

0.33 g



1 ECRU IDEAL  
607032 |



2 CLASSIC WHITE  
607031 |



1

2

# LONG-LASTING Automatic Eye Pencil

## LONG-LASTING AUTOMATIC EYE PENCIL

Expressive eye makeup for an incredibly long time? Now it's possible. It can be used for both day and evening makeup. It draws thick and thin lines with great precision.

- stays on your face without getting smudged for up to 12 hours
- the soft and velvety texture makes the application super easy
- a functional, automatic mechanism of a built-in sharpener enables you to apply makeup quickly and with great precision
- a wide range of shades – you are sure to find something you like
- ophthalmologist tested

0.31 g



1 DECADENCE BLACK  
607005 |



2 DARK BLUE  
607004 |



3 OCEAN REFLECTION  
607026 |



4 METALLIC TEAL  
607028 |



5 VIOLET VELVET  
607027 |



1

2

3

4

5







## Automatic BROW PENCIL

### AUTOMATIC BROW PENCIL

Emphasises the shape of eyebrows and makes them look thicker.

- **guarantees a deep, long-lasting colour and a natural effect**
- **with a built-in sharpener**

0.31 g



BISTRE  
607012 |



AUBURN  
607013 |



USE A BLENDING  
SPONGE  
INCLUDED TO  
CREATE SULTRY  
SMOKEY EYES

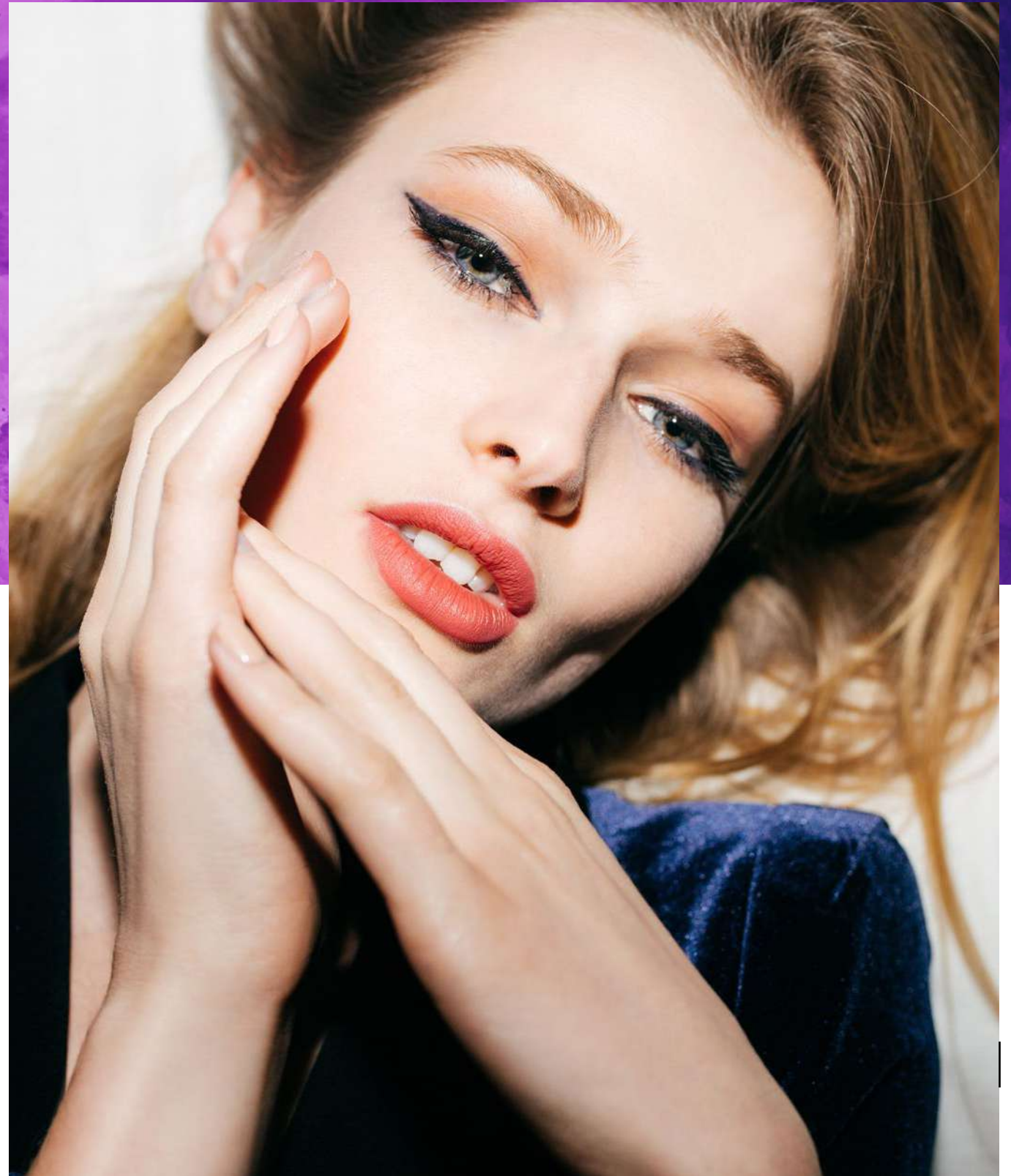
## Diamond EYE PENCIL

### DIAMOND EYE PENCIL

With diamond shine glitter that will add a glow to your look.

- **glamorous**
- **waterproof**

0.34 g | CRYSTAL BLACK | 607006 |







## Bottled EYELINER

### BOTTLED EYELINER

Intense blackness and incredible precision for expressive flirtatious eye makeup.

- a long-lasting effect, no need for touch-ups throughout the day
- ophthalmologically tested
- dermatologically tested
- suitable for vegans

4 g | DEEP BLACK  
607001 |



## Liquid EYELINER

### LIQUID EYELINER

Beautifully emphasises the eye contour and gives intensity to the look by making eyelashes look denser.

- a great way for a quick, classy makeup
- perfect and easy application

Store in a vertical position with the tip downwards

1.1 ml | CARBON BLACK  
607009 |



## Volumizing Waterproof MASCARA

### VOLUMIZING WATERPROOF MASCARA

Adds incredible volume to the lashes. Its perfectly profiled brush enables you to apply the mascara evenly from the roots to the tips, enhancing the volumising effect. The volatile silicone included in its formula makes the mascara extremely long-lasting. Bold, super-defined lashes in the blink of an eye.

- effectively protects your lashes from water and moisture
- suitable for vegans

8 ml | 607108 |



## Eyelash Enhancing SERUM

### EYELASH ENHANCING SERUM

The serum conditions eyelashes thanks to an active ingredient called: bimatoprost. It thickens and strengthens eyelashes and visibly improves their condition. The product may be used by people wearing contact lenses (remove the contact lenses before application of the serum). Can be used after chemotherapy, with eyelash extensions, with permanent makeup, and lashes after a henna treatment.

- makes eyelashes longer and thicker
- nourishes and regenerates even the weakest lashes

3 ml | 607107 |





## LEGENDARY FULL HD LASHES

## Mascara

## LEGENDARY FULL HD LASHES MASCARA

Thanks to its advanced formula, the mascara will make your eyelashes extremely thick, flirtatiously curly and maximally long. The specially designed wand will precisely separate and define each eyelash, even the shortest ones.

- perfectly lifted and optically denser eyelashes after the first application
- without clumps, smudges or flakes
- contains waxes that nourish the eyelashes improving their condition
- thanks to the walnut extract and the innovative hexapeptide-1, it gives a subtle effect of tinted eyelashes

13.5 ml | 607039 |

LARGE  
VOLUME AS  
MUCH AS  
13.5 ML

MULTI-DIMENSIONAL FULL HD EFFECT

LASH EXPERT  
Mascara

## LASH EXPERT MASCARA

Perfect eye makeup even for up to 12 hours, without smudging or crumbling.

- maximally lengthened and flirtatiously curled eyelashes
- an asymmetric, flexible wand: shapes and lifts the lashes with the longer bristles, and coats and separates even the tiniest lashes with the shorter bristles

11 ml | GLAM BLACK  
607105 |

PHENOMENAL  
Mascara

## PHENOMENAL MASCARA

Advanced formula and an ultraprecise wand guarantee a panoramic eyelash effect.

- with an innovative conditioning ingredient for longer and thicker lashes
- lengthened, thickened, perfectly separated and curled lashes
- flexible mini-wand perfectly emphasises even the shortest and most delicate lashes

10 ml | INTENSE BLACK  
607104 |

3 STEP  
Mascara

## 3 STEP MASCARA

An innovative formula stunningly increases the volume of eyelashes and moisturises them properly.

- 3 in 1: extended, thickened, lifted eyelashes
- the exceptional shape of the wand allows for applying the mascara from roots to ends

8 ml | PERFECT BLACK  
607103 |



# LUSTRE EFFECT

## Hyaluronic Lip Gloss

### LUSTRE EFFECT HYALURONIC LIP GLOSS

Contains hyaluronic acid that perfectly moisturises the delicate skin of the lips, leaving it soft and smooth. Shiny, semi-transparent shades provide a natural effect, perfect for wearing every day and for special occasions.

- makes your lips look fuller and plumper
- makes them sensual and silky
- regular application improves lips condition
- with a convenient, soft applicator
- has a non-sticky formula and a pleasant scent

7 ml



UNICORN DUST  
604036 |



CLASSY LADY  
604037 |



RASPBERRY KISS  
604038 |



WET-LOOK LIPS EFFECT

INSTANT FEELING  
OF SMOOTHNESS

# PLUMP EFFECT

## Chili Lip Gloss

### PLUMP EFFECT CHILI LIP GLOSS

Thanks to thousands of shimmering particles it visually plumps the lips making them incredibly alluring. Expressive, fashionable colours give your lips a seductive look and bring out your hidden sex appeal.

- with chilli pepper extract
- for temptingly full and sensuous lips
- with a convenient, soft applicator
- has a non-sticky formula and a pleasant smell

7 ml



VERY CHERRY  
604039 |



CANDY FLOSS  
604040 |



GOLDEN SHINE  
604041 |



WET-LOOK LIPS EFFECT

DAZZLING REFLEXES





COMING  
SOON







# COLOR INTENSE Lipstick

## COLOR INTENSE LIPSTICK

Provides full coverage and intense matte colour. Applying it to your lips will be a moment of pure pleasure – thanks to the creamy consistency, it is very easy to apply too. Contains nourishing chia seed oil which prevents the lipstick from drying out your lips. They will look smooth and tempting.

- guarantees silky smooth matte finish and intense colour that stays on your lips for long
- contains precious chia seed oil
- non-sticky formula and creamy texture offering you a long-lasting feeling of comfort – you won't even feel you are wearing it

4.2 g

- 1

SHADOW  
604045 |
- 2

CARAVAN  
604043 |
- 3

SANDSTORM  
604042 |



- 4

CLASSIC RED  
604232 |
- 5

PASSIONATE RED  
604226 |
- 6

SWEET CORAL  
604228 |
- 7

CARMINE BLISS  
604230 |
- 8

BURGUNDY WINE  
604233 |
- 9

PLUM CHOCOLATE  
604227 |
- 10

PASSIONATE FIRE  
604229 |
- 11

AMAZING NUDE  
604231 |

- 12

SPLENDID MAGENTA  
604234 |
- 13

VIBRANT FUCHSIA  
604224 |
- 14

SMOKED LYCHEE  
604225 |
- 15

BLAZING CORAL  
604220 |
- 16

CUTE PINK  
604223 |
- 17

RAVISHING ROSE  
604222 |
- 18

CLASSIC NUDE  
604221 |





# Long-Lasting Matte LIQUID LIPSTICK

## LONG-LASTING MATTE LIQUID LIPSTICK

A perfect matte effect that will stay on your lips for multiple hours. The ultra-light formula not only guarantees a perfect, intensive matte finish but also does not overburden the lips, ensuring an exceptional sense of comfort. Thanks to such precious, natural ingredients as beeswax and avocado oil, the lipstick will not make your lips dry. The easy application and long-lasting colour without the sticking, drying and smearing effect will make you fall in love with it from the first use.

- **no more frequent corrections of your makeup – the lipstick will stay on your lips for up to 6 hours**
- **its exceptional composition ensures intense, matte colour, which not only does not make your lips dry but also gives them the feeling of hydration**
- **thanks to a precise applicator and silky texture with a pleasant scent, applying colour to your lips will become a real pleasure**

6 ml



HOT RED  
604014 |



TAFFY  
604011 |



CERISE  
604012 |



CREAMY  
604016 |



VIOLET  
604015 |



CRIMSON  
604010 |



ROSE  
604017 |



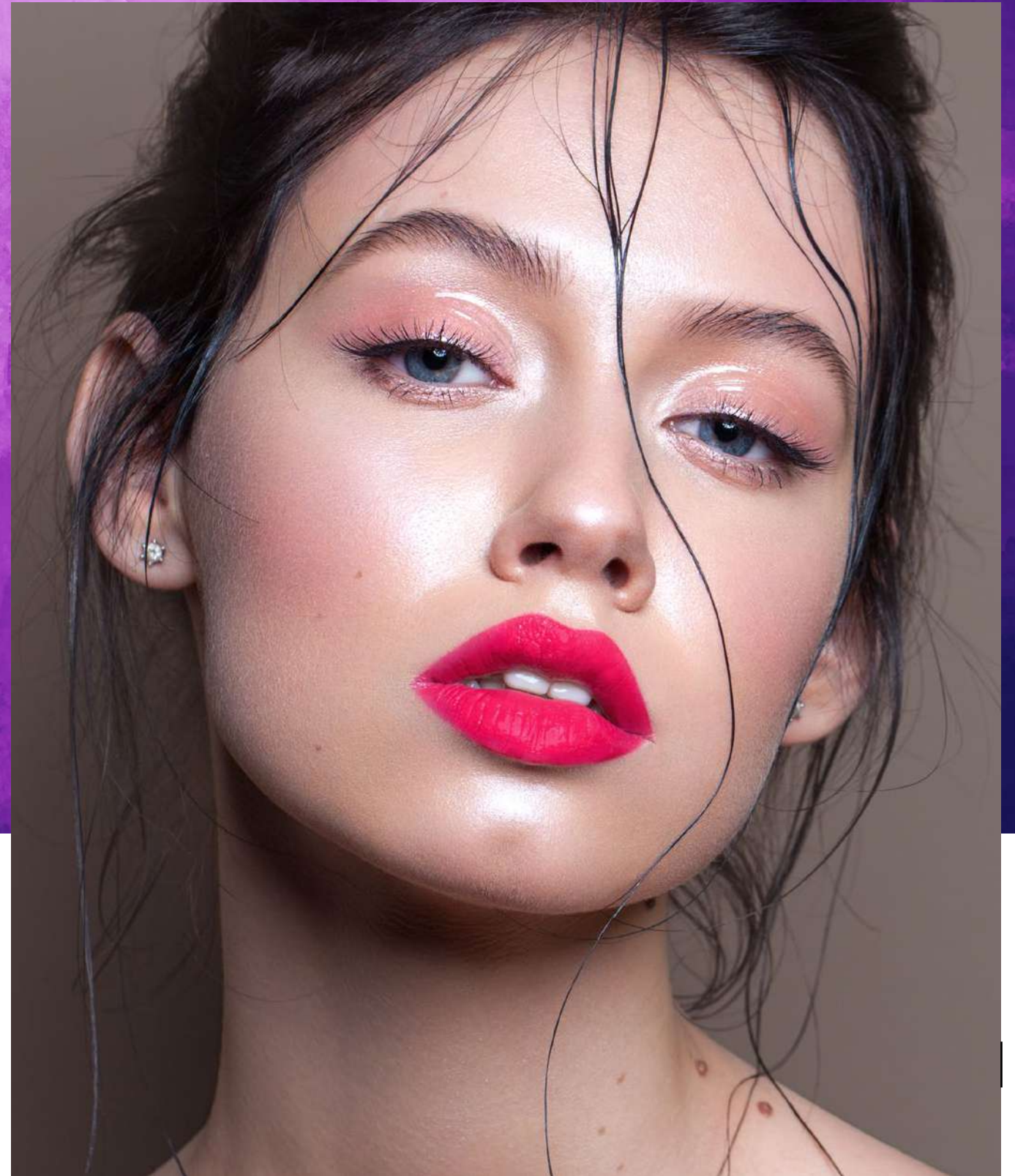
MAUVE  
604009 |



BLUSH  
604013 |



CLARET  
604018 |







## 2 Phase MAKEUP REMOVER

### 2 PHASE MAKEUP REMOVER

Gentle yet highly effective at removing eye and lip makeup, also waterproof formulas.

- **leaves the skin moisturised, soft and smooth**
- **hypoallergenic**

150 ml | **609001** |



## MICELLAR LOTION

### MICELLAR LOTION

Removes makeup and cleanses the skin, perfectly preparing it for further skincare routine.

- **based on rose water from damask rose's petals**
- **perfectly refreshes the skin**

150 ml | **609002** |



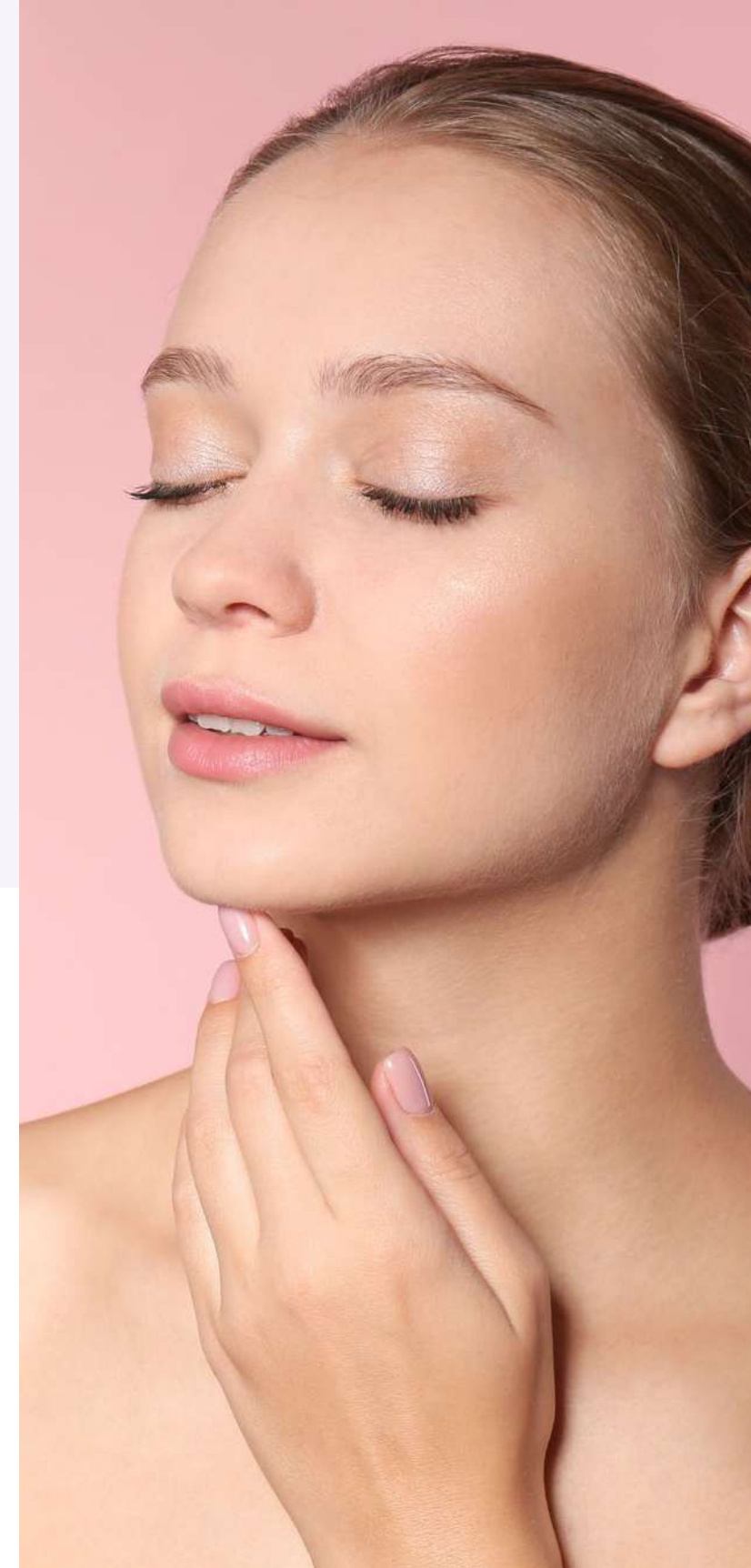
## Makeup Remover TOWEL

### MAKEUP REMOVER TOWEL

Thoroughly removes even waterproof makeup without the use of cosmetic products.

- **just dampen it with water**
- **suitable for all skin types, including sensitive skin**

**608107** |





## Nail Lacquer GEL FINISH

### NAIL LACQUER GEL FINISH

Ultra-glossy formula with a gel finish effect.

- provides a saturated, long-lasting colour and excellent coverage from the first application
- resistant to chipping, abrasion and dulling
- with a wide nail polish brush

11 ml



				
MILKY DREAM 603150	TRENDY BEIGE 603106	COPPER LUSTRE ▲ 603136	GLAM BROWN 603107	STYLISH RED 603103
				
COTTON CANDY 603146	PINK RAPTURE 603143	LEGENDARY FUCHSIA 603149	PASTEL HEATHER 603144	POSH RED 603104
				
TRENDY VIOLET 603142	OCEAN IN THE SUN ▲ 603140	PEARLY RASPBERRY ▲ 603138	MYSTERIOUS CLARET ▲ 603120	

▲ Metallic



## Nail CONDITIONER with Keratin

### NAIL CONDITIONER WITH KERATIN

Designed for splitting nails.

- keratin regenerates and hardens the nail plate protecting it against damage

10 ml | 603006 |



## Nail CONDITIONER 8 in 1

### NAIL CONDITIONER 8 IN 1

A real multitasker: intensely regenerates, strengthens, protects, provides smoothness, restores the lustre, dries fast and lasts long.

- visibly improves the appearance and condition of damaged nails
- prevents breaking, brittleness and splitting

10 ml | 603005 |





## Nail Top Coat HYBRID LOOK

### NAIL TOP COAT HYBRID LOOK

Gives your painted nails a hybrid manicure look and an amazing shine without the use of UV light. The unique formula provides effective protection against chipping and wearing down of the nail polish.

- **does not require the use of UV lamp**
- **emphasises the intensity of the colour**
- **extends the durability of the manicure to up to 7 days**
- **can be removed with any nail polish remover**

11 ml | 603152 |



## Acetone Nail Polish REMOVER

### ACETONE NAIL POLISH REMOVER

Extremely effective nail lacquer remover. It contains vitamin E, which moisturises nails and panthenol to improve their condition.

- **removes even the most durable nail lacquer**
- **contains vitamin E and panthenol responsible for improving the condition of the nail**

150 ml | 603009 |



## Acetone Free Nail Polish REMOVER

### ACETONE FREE NAIL POLISH REMOVER

Not only removes nail lacquer but also contains castor oil which has moisturising properties. This helps to keep the nails in good condition.

- **convenient application**
- **smells of strawberry with vanilla**

150 ml | 603008 |





Makeup Artist  
CASE

MAKEUP ARTIST CASE

Excellent for storage of your makeup accessories and cosmetics. Very spacious and practical with an inside mirror.

- excellent during travels to store your cosmetic essentials
- folds out sideways with four extendable shelves

VERY HANDY SIZE: 24 x 22 x 18 cm



BLACK  
608115 |

SILVER  
608114 |

PINK  
608116 |

GOLDEN  
608123 |



Latex-Free  
MAKEUP SPONGE

LATEX-FREE MAKEUP SPONGE

Helps to apply the perfect face makeup. Ideal for foundation and concealer application.

- latex-free
- a unique, precise shape

608104 |



Professional  
BRUSH SPRAY

PROFESSIONAL BRUSH SPRAY

Immediately prepares brushes for reuse, removing the remains of makeup and cosmetics. Recommended for cosmetic brushes with natural and synthetic bristles.

- perfectly cleanses the brushes
- thanks to the special ingredients, it maintains the bristles of the brushes and also gives them a pleasant scent

100 ml | 608113 |





Powder **BRUSH**  
no. 402

POWDER BRUSH NO. 402

Suitable for application and distribution of loose and pressed powders.

- synthetic bristle

608402 |

Kabuki **BRUSH**  
no. 400

KABUKI BRUSH NO. 400

Ideal for quick application of loose, pressed and mineral powders.

- synthetic bristle

608400 |



Facial Mask  
**BRUSH** no. 404

FACIAL MASK BRUSH

Enables the hygienic, quick and precise application of facial creams and masks of different consistency. Because it is made of synthetic bristles, it does not absorb large amounts of product and allows it to be applied evenly.

- easy to wash and dries quickly
- has a flattened shape that facilitates the application and mixing of masks

608003 |



Angled Brow  
**BRUSH** no. 404

ANGLED BROW BRUSH  
NO. 404

For application of eyebrow cosmetics with powder, cream, gel and wax formula.

- synthetic bristle

608404 |



Eyeshadow Mini  
**BRUSH** no. 406

EYESHADOW MINI BRUSH  
NO. 406

Perfect for precise application of all eyeshadow types.

- synthetic bristle

608406 |



Shadows  
Blending **BRUSH**  
no. 410

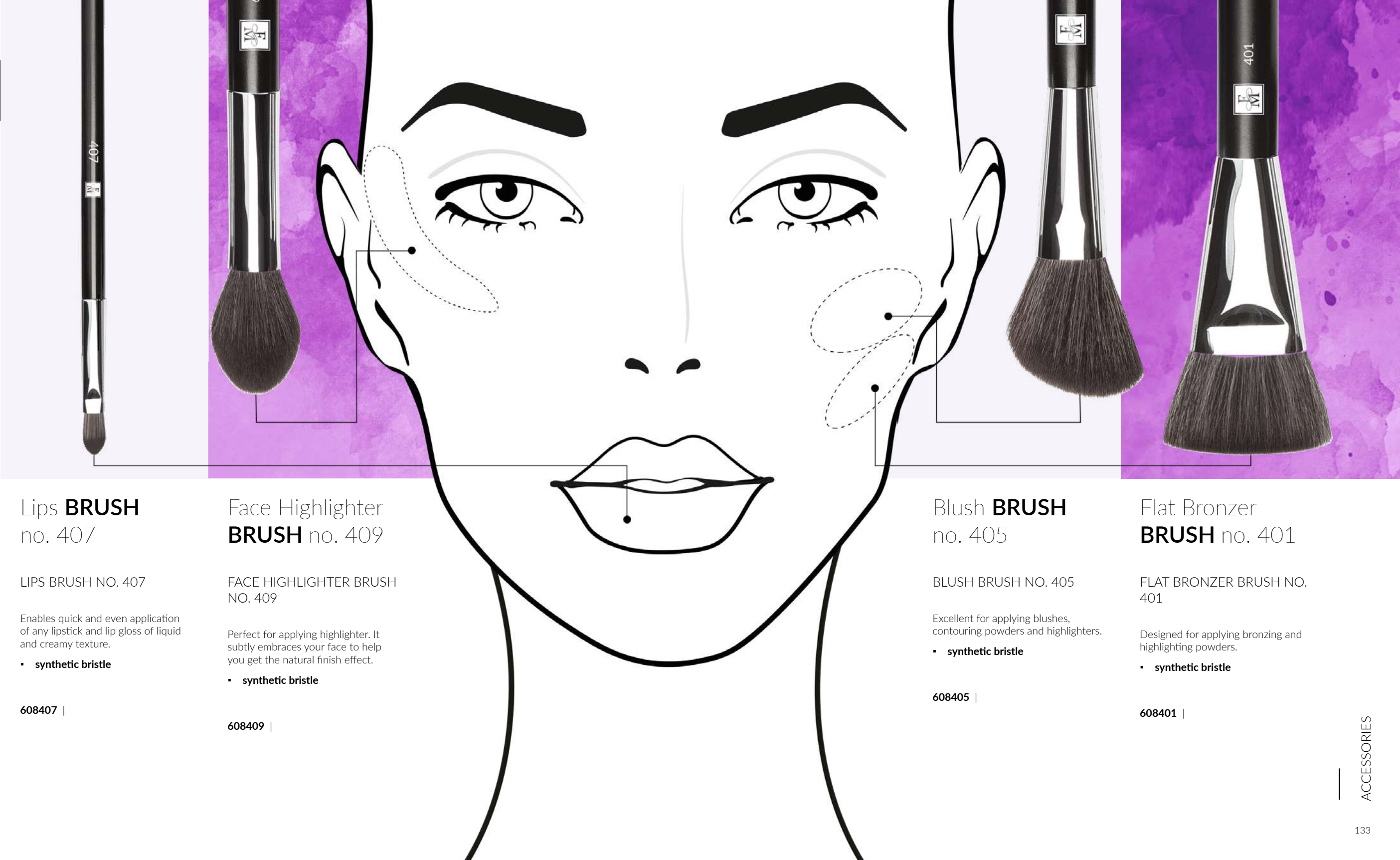
SHADOWS BLENDING  
BRUSH NO. 410

Its well-designed shape is perfect for applying eyeshadow on the eyelids. It wonderfully blends the colours reducing the risk of leaving harsh lines.

- synthetic bristle

608410 |





Lips **BRUSH**  
no. 407

LIPS BRUSH NO. 407

Enables quick and even application of any lipstick and lip gloss of liquid and creamy texture.

- synthetic bristle

608407 |

Face Highlighter **BRUSH** no. 409

FACE HIGHLIGHTER BRUSH NO. 409

Perfect for applying highlighter. It subtly embraces your face to help you get the natural finish effect.

- synthetic bristle

608409 |

Blush **BRUSH**  
no. 405

BLUSH BRUSH NO. 405

Excellent for applying blushes, contouring powders and highlighters.

- synthetic bristle

608405 |

Flat Bronzer **BRUSH** no. 401

FLAT BRONZER BRUSH NO. 401

Designed for applying bronzing and highlighting powders.

- synthetic bristle

608401 |





# aurile

## Savour the taste...

of AURILE coffees and teas, which were created with exceptional passion and professionalism. We highly recommend our functional coffees. They have been developed by scientists and not only taste delicious, but also contain ingredients valuable for your health: vitamins and minerals. Aurile teas have been enriched with flower petals and natural aromas, so that you can enjoy their great taste every day.



# CREME

Instant Coffee

## CREME INSTANT COFFEE

The harmonious composition of high-quality coffees with a mild taste and delightfully rich aroma captivates all senses from the very first sip. A cup full of finesse enchants with expressive notes, making each moment unique.

- delicate and perfectly balanced
- creates velvety foam on the surface
- perfect for afternoon meetings with friends

80 g | 802001 |



# INTENSE

Instant Coffee

## INTENSE INSTANT COFFEE

It is a composition of perfectly selected coffees creating an intriguing combination of clarity and richness of aroma. It stimulates action, while providing intense sensations. It's a cup full of black, energising essence.

- due to the freeze-drying process it impresses with strong, multi-layered taste
- for connoisseurs of deep coffee accents
- for a great start to your day

100 g | 802002 |



# INSTANT

A feast for the palate and the senses. Enjoy a moment of pleasure with aromatic coffee anywhere and anytime.



# EXCELLENCE GROUND

Coffee / Coffee Beans

EXCELLENCE GROUND  
COFFEE / COFFEE BEANS

- 100% Arabica
- Mocha is one of the noblest coffee varieties. It has a deep, mellow taste.
- an original blend of the best African Arabica beans
  - origin: Sidamo region, Ethiopia

250 g | GROUND COFFEE  
802003 |

1 kg | COFFEE BEANS  
802004 |



NATURAL

We chose the noble Arabica and its blends for our natural coffees, to let you enjoy its great taste in all forms.



## CLASSIC

Coffee Capsules

CLASSIC COFFEE CAPSULES

- 100% Arabica, fine grind, for espresso
- Machine Colombian strains of Arabica enclosed in our capsules create a silky brew with gentle acidic overtones.
- in convenient capsules, compatible with the Nespresso®\* system
  - origin: Colombia

10 x 5,5 g | 802005 |

\*Nespresso® is a registered trademark owned by Société Des Produits Nestlé SA. FM WORLD and AURILE are not affiliated contractually, financially or organisationally with Nespresso® Nestlé or Nespresso® SA. FM WORLD sp. z o.o. is neither the licensee nor the distributor of the Nespresso® brand.



## PURE GREEN

Coffee

CLASSIC COFFEE CAPSULES

- 100% Arabica, coarse grind, unroasted, pyramid-shaped bags
- Delicate flavour with distinct notes of wine. It contains a large amount of the chlorogenic acid (CGA) and caffeine which has stimulating properties.
- recommended for those who appreciate delicate flavours and want to stay in shape
  - from ecological farms
  - origin: Peru

20 x 7 g | 802006 |







## HAZELNUT

Ground Coffee

HAZELNUT GROUND COFFEE

Velvety note of hazelnuts in perfect harmony with the taste of stimulating coffee is the recipe for an excellent morning and unforgettable afternoon.

- **origin: East Asia**

250 g | **804002** |



## CHOCOLATE

Ground Coffee

CHOCOLATE GROUND COFFEE

Classic, sophisticated chocolate aroma in the unforgettable duet with top quality Arabica and Robusta will guarantee a moment of relaxation and wonderful taste.

- **origin: East Asia**

250 g | **804003** |



## IRISH CREAM

Ground Coffee

IRISH CREAM  
GROUND COFFEE

Exquisite whisky and soft sweet cream enrich the aroma of natural, freshly ground coffee making it even more sophisticated. You will dream that this pleasure never ends.

- **origin: East Asia**

250 g | **804005** |



## CHERRY

Ground Coffee

CHERRY  
GROUND COFFEE

Strong coffee complemented with the aroma and sweetness of ripe, juicy cherries. Every sip will take you to a sun-drenched orchard.

- **origin: East Asia**

250 g | **804001** |



## VANILLA

Ground Coffee

VANILLA  
GROUND COFFEE

The exotic sweet aroma of vanilla introduces warm and joyful notes to complement the taste of natural coffee. A true feast for the senses.

- **origin: East Asia**

250 g | **804004** |

## FLAVOURED

Chocolate or cherry? The delicious taste of hazelnuts or sweet vanilla flavour? Have fun and experiment with our flavoured coffees which taste excellent served both hot and cold.





## FOCUS Ground Coffee

### FOCUS GROUND COFFEE

with Guarana extract and magnesium

Aromatic coffee enriched with ingredients which contribute to the elimination of tiredness and fatigue will help you clear your mind as well as focus on what is important.

- **double power: with an additional portion of Guarana caffeine**
- **indispensable for people working intellectually and students who want to improve their memory and ability to focus**
- **RDA\* in 2 cups of coffee: 30% magnesium, vitamin B2, 24% pantothenic acid, niacin, biotin**
- **origin: East Asia**

250 g | 803003 |



## FUNCTIONAL

Lack of energy, unhealthy diet, stress? Start fighting them today. Our functional coffees will be of help, as they have been developed in consultation with scientists and proper nutrition specialists.



## METABOLISM Ground Coffee

### METABOLISM GROUND COFFEE

with Garcinia Cambogia and L-carnitine

Aromatic, delicious coffee which perfectly complements the slimming and detoxification process. When combined with a balanced diet and a bit of physical activity it will make you look and feel lighter.

- **recommended for those who wish to stay in shape, fight excess weight or obesity, or improve metabolism**
- **RDA\* in 2 cups of coffee: 38% chromium, 30% zinc, vitamin B2, 24% pantothenic acid, niacin, biotin**
- **origin: East Asia**

250 g | 803001 |



## ENERGY Ground Coffee

### ENERGY GROUND COFFEE

with Guarana extract and taurine

Stimulating taurine and B group vitamin complex, in combination with the distinctive taste, boost your psychophysical efficiency. The increased dose of invigorating guarana caffeine refreshes and provides energy for the whole day.

- **excellent for very active persons, night shift workers, athletes, frequent travellers**
- **RDA\* in 2 cups of coffee: 30% vitamin B2, 24% pantothenic acid, niacin, biotin**
- **origin: East Asia**

250 g | 803002 |

\*RDA - Recommended Daily Allowance. Research assumptions: 10 g coffee / 150 ml of beverage..





HAPPINESS  
Blue Tea

HAPPINESS BLUE TEA

Oolong loose leaf tea with blackcurrant, natural vanilla and peach flavour

Exquisite deep taste and mysterious, slightly emerald green colour of Oolong tea are born in the process of half-fermentation of leaves. Aromatic brew, seducing with blackcurrant notes, contains polyphenols that are beneficial to your health.

- **unique tea, called Black Dragon**
- **with whole blackcurrants**
- **origin: Chinese Fujian province**

75 g | **805001** |



JOY  
Red Tea

JOY RED TEA

Pu-erh loose leaf tea with dried cherries, chokeberries rose petals and a natural cherry flavour

Aromatic red tea enriched with dried cherries and chokeberries, and delicate rose petals. It contains, among others, natural digestible selenium, vitamin E, and valuable flavonoids.

- **rich aroma with a subtle cherry note**
- **origin: Chinese Yunnan province**

75 g | **805002** |



NOBLE  
Black Earl  
Grey Tea

NOBLE BLACK  
EARL GREY TEA

Ceylon loose leaf tea with natural bergamot oil, cornflower petals, orange zest and lemon myrtle

The combination of Ceylon black tea with natural bergamot oil from Italy, orange zest, cornflower petals, and lemon myrtle forms the unique variation on the classic Earl Grey tea.

- **distinct character, valued by Earl Grey enthusiasts**
- **origin: Sri Lanka**

75 g | **805003** |



EUPHORIA  
Green Tea

EUPHORIA GREEN TEA

Gunpowder loose leaf tea with verbena, lemongrass, sunflower petals, lemon zest and a natural lemon flavour

The combination of Gunpowder green tea youngest leaves, aromatic verbena, lemongrass, lemon zest and sunflower petals is the key to this energising composition.

- **combines a sweet taste and a rich lemon aroma**
- **origin: Chinese Zhejiang province**

75 g | **805004** |



SERENITY  
White Tea

SERENITY WHITE TEA

Pai Mu Tan loose leaf tea with rose petals

Noble white tea with rose petals and a mild floral aroma delights with its velvety, slightly sweet taste. This exceptionally subtle, harmonious composition is rich in vitamins A and E as well as beneficial polyphenols.

- **created with very young tea leaves, exceptionally delicate**
- **origin: Chinese Fujian province**

30 g | **805005** |



HARMONY  
Black Tea

HARMONY BLACK TEA

Yunnan loose leaf tea with hibiscus, jasmine flowers, marigold petals, dried cranberries and a natural peach flavour

Exquisite black Yunnan tea ennobled with jasmine flowers and other unique additives, known for its distinct refreshing taste, and delightful delicate peach aroma.

- **with a harmonious taste loved by people all over the world**
- **origin: Chinese Yunnan province**

75 g | **805006** |





# PURE HOME

## Wrap yourself with irresistible scents

Perfume has remarkable power. It works like magic. To surround ourselves with the magical mist of unbelievable experience we reach for a bottle of perfume. But we decided to take a step forward and created a unique line of perfumed products. Thanks to PURE HOME, our unique fragrances will be with you during your everyday tasks. From now on, simple household tasks will become a real pleasure, and the whole house will be filled with a charming smell.



COMING  
SOON

COMING  
SOON





# HOME RITUAL Fragrance

## FRAGRANCE HOME RITUAL

They enable you to experience an exceptional scented home ritual every day. Allow yourself a bit of luxury with the unique scents in a beautiful setting.

- sophisticated fragrance compositions will fill your room with a unique, long-lasting scent
- elegant design
- long-lasting – up to 70 days

100 ml



- FOR HER:
- 718005 | PURE 05 |
  - 718018 | PURE 18 |
  - 718020 | PURE 20 |
  - 718021 | PURE 21 |
  - 718032 | PURE 32 |
  - 718081 | PURE 81 |
  - 718372 | PURE 372 |
  - 718413 | PURE 413 |
  - 718436 | PURE 436 |
  - 718489 | PURE 489 |
  - 718366 | PURE ROYAL 366 |
  - 718809 | PURE ROYAL 809 |

- FOR HIM:
- 718052 | PURE 52 |
  - 718056 | PURE 56 |
  - 718134 | PURE 134 |
  - 718472 | PURE 472 |
  - 718473 | PURE 473 |
  - 718335 | PURE ROYAL 335 |

- UNISEX:
- 718900 | PURE ROYAL 900 |
  - 718910 | PURE ROYAL 910 |

## STYLISH DESIGN, UNIQUE FRAGRANCE

The prestigious PURE HOME line impresses not only with the unique fragrances, but also with the extremely stylish design. We chose the most beautiful fragrance compositions that will enable you to create an amazing scented home ritual to pamper the senses of your family and enchant all of your guests too.



# HOME RITUAL Fragrance Candle

## HOME RITUAL FRAGRANCE CANDLE

With a captivating scent and the highest quality standard. It introduces a sensual mood to the room, at the same time being an appealing decoration for any interior. Contains paraffin produced in a modern, hydrotreating process that meets the strict requirements of the German RAL standards.

- **burn time: 35 to 40 hours**
- **immersed in an elegant glass**
- **with timeless PURE and PURE ROYAL perfumes**

150 g

FOR HER:

- 719018** | PURE 18 |
- 719020** | PURE 20 |
- 719413** | PURE 413 |
- 719809** | PURE ROYAL 809 |

FOR HIM:

- 719472** | PURE 472 |

UNISEX:

- 719900** | PURE ROYAL 900 |
- 719910** | PURE ROYAL 910 |



## HOW TO PROPERLY LIGHT THE CANDLE

Before each lighting, cut the wick to a height of about 5 mm, so that the flame will be stable and the candle will not smoke. Burn it for 3 to 4 hours – this will prevent tunnelling (the wax will melt evenly), and will also allow the candle to develop a full bouquet of aromas.

## THE HIGHEST QUALITY STANDARD

Home Ritual scented candles meet strict requirements of the German RAL standard in terms of:

- **scent intensity,**
- **optimal burning behaviour**
- **wick quality – a strong cotton wick of suitable thickness, resistant to breaking and drowning**
- **minimal smouldering, which does not pollute the airways**
- **reduced soot, which ensures the candle looks beautiful when used**





## Air FRESHENER

### AIR FRESHENER

The original fragrance composition smells as beautiful as your favourite PURE and PURE ROYAL perfumes. Gradually releases a distinct fragrance.

- with a convenient elastic band to hang
- ideal for various interiors, e.g. home, office or car

9,5 g, 10,5 g

#### FOR HER:

**708051** | PURE 18 |  
**708050** | PURE 20 |  
**708059** | PURE 489 |  
**708052** | PURE ROYAL 809 |

#### FOR HIM:

**708049** | PURE 472 |  
**708053** | PURE Royal 823 |

#### UNISEX:

**708054** | PURE ROYAL 900 |



## Perfumed Ironing LIQUID

### PERFUMED IRONING LIQUID

Makes ironing a real pleasure. Just pour about 5 ml of perfumed ironing liquid in the iron to make the clothes smell amazing. It comes in 3 captivating fragrances.

- gives the clothes a unique scent

100 ml

**704015** | PURE 10 |  
**704016** | PURE 23 |  
**704017** | PURE 81 |



## Wardrobe FRAGRANCE

### WARDROBE FRAGRANCE

Unique perfume compositions in your wardrobe, bedroom and office.

- gradually release the scent

14,2 g, 15,2 g

#### FOR HER:

**708041** | PURE 18 |  
**708039** | PURE 20 |  
**708018** | PURE 23 |  
**708019** | PURE 33 |  
**708036** | PURE 413 |  
**708044** | PURE 436 |  
**708058** | PURE 489 |  
**708037** | PURE ROYAL 366 |  
**708043** | PURE ROYAL 809 |

#### FOR HIM:

**708040** | PURE 472 |  
**708042** | PURE 473 |  
**708038** | PURE ROYAL 335 |  
**708045** | PURE ROYAL 823 |

#### UNISEX:

**708055** | PURE ROYAL 900 |





## Take care of your home without making an effort

It is always a pleasure to return to a neat, clean and fragrant home. So you can truly enjoy your cleaning time as well, we have created our modern SMART & CLEAN brand. Thanks to our professional line of products you can now easily in a blink of an eye take care of the cleanliness and hygiene of your home, while the new line of probiotic products is environmentally friendly, helping you create a healthy micro-climate inside your home.





100% ACTIVE PROBIOTICS

Probiotic Multi-Purpose **CLEANER**

PROBIOTIC MULTI-PURPOSE CLEANER

Ensures effective and long-term elimination of all dirt and unpleasant odours from all types of washable surfaces, among others: ceramic glaze, floors, kitchen tabletops, walls and sanitary fittings.

1000 ml | **713005** |



CLEANLINESS AT THE MICROSCOPIC LEVEL

Probiotic Floor **CLEANER**

PROBIOTIC FLOOR CLEANER

Removes contaminants and bad bacteria cultures from the cleaned surfaces, as well as eliminates unpleasant odours for a long time.

1000 ml | **713001** |



LONG-TERM ELIMINATION OF PATHOGENS AND BACTERIA

Probiotic Washing-Up **LIQUID**

PROBIOTIC WASHING-UP LIQUID

Perfectly degreases the dishes. Moreover, it keeps the hydraulic components clean and it is gentle on the skin.

750 ml | **713003** |



Probiotic Hand **GEL**

PROBIOTIC HAND GEL

Cleans hands thoroughly without the use of water, as well as moisturises them perfectly. It restores the appropriate microflora of the skin.

500 ml | **713004** |



THEY CREATE A HEALTH-FRIENDLY MICRO-CLIMATE

Probiotic Laundry **LIQUID**

PROBIOTIC LAUNDRY LIQUID

Due to the concentrated formula, it is sufficient for 50 washes. It perfectly cleans white and coloured clothes, providing them with a beautiful scent. Moreover, it protects the washing machine against dirt deposits.

1500 ml | **713002** |



Find our special symbol and look for it on other products – each one is environmentally friendly!

Ecological cleaning products will take care not only of your home, but also your skin, health and the environment. Discover the beneficial power of probiotic preparations.

LET THE GOOD BACTERIA FEEL AT HOME

The positive impact of probiotics on the human body has been known for years. Their beneficial properties fit perfectly into the constantly developing eco-trend. We have used them to create an exceptional line of household products, in order to enable the removal of dangerous pathogens from the surfaces. The interior of your home will not only be perfectly clean, but it will be also populated with beneficial strains of bacteria.



EFFECTIVE FOAM  
Washing-Up Liquid

EFFECTIVE FOAM  
WASHING-UP LIQUID

The innovative formula easily removes all dirt and even the most stubborn grease from the dishes. It foams perfectly, making it extremely efficient.

- creates a dense, active foam that effectively washes dishes, leaving them perfectly clean and shiny
- turns the washing-up routine into a real pleasure
- very efficient – it lasts for a long time

750 ml  
250 ml



1

1 AVOCADO& BERRIES  
705014 |

A subtle combination of avocado and forest fruit aromas. Enriched with avocado extract and panthenol.

2 RASPBERRY  
750 ml | 705015 |  
250 ml | 705015.02 |

Sweet and tempting raspberry fragrance. Contains raspberry extract and allantoin.



2

SPOTLESS AND  
HYGIENICALLY  
CLEAN

Our cleaning products that are designed for the kitchen are the embodiment of passion and commitment that we have towards our work. We know they are reliable as we use them ourselves. We want your kitchen to be a place that is spotless and hygienically clean.







## Washing-Up LIQUID

### WASHING-UP LIQUID

Can easily deal with grease and other dirt. Enriched with vitamins and plant extracts that moisturise and nourish the skin of your hands.

- gentle on the hands – pH 5.5

750 ml

1 ALOE  
705005 |

Contains aloe extract which moisturises and regenerates the skin of your hands.

2 RED CITRUS  
705004 |

Recommended for dry hands – with the extract of exotic fruit.

## Washing-Up BALM

### WASHING-UP BALM

Effectively removes grease and other dirt. It contains glycerin, allantoin and babassu oil obtained from Brazilian palm nuts, which leaves a pleasant feeling of hydration on the hands.

- clean dishes, beautiful hands

750 ml | 705006 |

## DEGREASER Extra Power

### DEGREASER EXTRA POWER

Undeclared in the fight against grease – removes even sticky residues and burnt grease. Especially recommended for: countertops, sinks, fryers, hoods and hobs, ovens, grills, and pots.

- cleans without streaks and scratches

750 ml | 705009 |

## Kitchen CLEANER

### KITCHEN CLEANER

Indispensable in every kitchen. With active foam, the cleaner removes dirt and dust. It ensures perfect cleanliness without streaks and water stains. Additionally, it gently polishes and makes the cleaned surfaces look well-kept.

- excellent for everyday use

750 ml | 705003 |

## Fridge & Microwave CLEANER

### FRIDGE & MICROWAVE CLEANER

A guarantee of hygienic cleanliness. The cleaner removes dirt, including greasy stains, while supporting defrosting. With a convenient trigger cap that reaches areas which are hard to reach.

- leaves a fresh citrus scent
- for everyday use

750 ml | 705011 |





Ceramic Hob  
CLEANER

CERAMIC HOB CLEANER

A modern formula thoroughly cleans and cares. Active foam is easy to spread, leaves no streaks or scratches.

- prevents sticking of new dirt
- gentle to the cleaned surfaces

750 ml | 705010 |



DESCALER  
All Purpose

DESCALER ALL PURPOSE

Forget limescale. The Descaler All Purpose instantly removes limescale even from areas which are difficult to reach. If used regularly it extends the life of appliances. Recommended for: kettles, heaters, sieves, irons, coffee machines and other household appliances.

- concentrated acidic formula
- effective and efficient

250 ml | 705013 |



Inox  
CLEANER

INOX CLEANER

Designed to care for matt stainless steel elements and surfaces. Removes greasy stains and fingerprints. Cleans, polishes and protects against new dirt.

- does not scratch or leave streaks

250 ml | 705012 |



Storage  
BOX

STORAGE BOX

Dishwasher tablets, laundry capsules – this handy box will fit them all. Protect capsules against moisture. The four-snap lid additionally protects the box contents from children.

Dimensions: 19,5 x 14 x 10 cm | 710001 |



3 in 1 Dishwasher  
TABS

3 IN 1 DISHWASHER TABS

Multifunctional: the tabs thoroughly wash the dishes and make them shine, as well as protect the dishwasher. They remove even burnt remains of food and the most difficult stains of coffee, tea, and spots of grease or eggs.

- protect cutlery against corrosion, and glass against looking cloudy
- sold in sets of 10 pieces – buy as many tabs as you actually need

180 g / 10 szt. | 981002 |





Liquid SOAP

LIQUID SOAP

Give your skin perfect purity and hydration. The carefully selected ingredients of soap wash thoroughly and gently nourish the hands, leaving a subtle scent.

500 ml



1

2

3

**1** MANGO & PEACH  
**701005** |

The sweet aroma of appetising mango and peach is a daily moment of relaxation.

**2** CITRUS & CONIFERS  
**701006** |

The sophisticated combination of conifer notes with refreshing accords of citrus, lemongrass, and a light touch of rosewood.

**3** HYPOALLERGENIC  
**701004** |

It effectively cleans and nourishes the sensitive skin of hands, removes even oily dirt. It does not contain scented allergens and colouring.



1

2

Toilet Bowl CLEANER

TOILET BOWL CLEANER

Choose hygienic cleanliness. The cleaner effectively removes all kinds of dirt and limescale. Designed for cleaning toilet bowls, ceramic and metal sinks, bathtubs, shower trays, ceramic tiles, terracotta and metal fittings.

- **thick gel texture thoroughly coats the cleaned surfaces**
- **does not scratch the surface and is easy to rinse**
- **leaves a pleasant scent**

750 ml | **705010** |

**1** BLOOMING POWER  
**707003** |

The captivating scent of spring flowers.

**2** EXOTIC FRUITS  
**707002** |

The joyful scent of exotic fruits.



Bathroom CLEANER

BATHROOM CLEANER

Actively removes scale and soap. It contains innovative ingredients that prevent the formation of water spots.

- **leaves a clean shine and cares for the surface**
- **with a pleasant floral-fruity aroma**

750 ml | **709001** |



Shower CLEANER

SHOWER CLEANER

Clean and shiny shower. With the content of nanoparticles of silicon the cleaner creates a protective film that limits the re-deposition of dirt, sediment and water vapour.

- **the unique formula works effectively even in cold water**
- **safe for allergy sufferers**

750 ml | **709002** |



Bathroom Cleaning WIPES

BATHROOM CLEANING WIPES

Easily remove all kinds of water spots and deposits from the bathtub, washbasin, shower cabin, tiles or toilet.

- **due to the antibacterial properties, they ensure hygienic cleanliness**
- **they give the surfaces a pleasant and fresh scent**

60 pcs | **706005** |

THE REALM OF RELAXATION

Turn your bathroom into a realm of relaxation. Create a set of your favourite cosmetics, light the candles, forget about everyday worries. SMART & CLEAN products will take care of everything else for you.





Limescale & Rust  
Remover **GEL**

LIMESCALE & RUST REMOVER GEL

Easily removes deposits of limescale, rust, soap and other dirt. If used regularly the Gel counteracts the formation of new dirt.

- gently polishes
- clean and scratch-free fittings

750 ml | **706003** |



Multi-Surface Soft  
**CLEANER**

MULTI-SURFACE SOFT CLEANER

A scrub-free pleasure of cleaning. Velvet soft, yet effective. It removes even the most stubborn dirt and grease.

- with cleaning dolomite
- does not scratch or discolour the cleaned surface

750 ml | **706002** |



Grout  
**CLEANER**

GROUT CLEANER

Clean grout expert. Actively protects against dirt and moisture. It does not dissolve or discolour the grout.

- for white and coloured grout
- for any dirt

750 ml | **706004** |



Drain Clear  
**GRANULES**

DRAIN CLEAR GRANULES

Reach for them to forget your plumber's number. They dissolve grease, hair and kitchen waste. Designed for unclogging sewer pipes, drains and traps in sinks, bathtubs and shower trays.

- essential in every kitchen and bathroom
- use at least once a month

500 g | **706001** |

**CLEANING PRODUCTS  
FOR SPECIAL TASKS**

They will reach every nook and get rid of all unwelcome guests. Nothing will stop them. Leave your kitchen and bathroom to our cleaning products for special tasks.





## Multi-Fabric STAIN REMOVER

### MULTI-FABRIC STAIN REMOVER

Tough on stains, gentle on your clothes. Thanks to active enzymes, it removes even grass stains, blood, eggs and greasy sauces. Safe for colours and delicate fabric.

- **effective even at low temperatures**
- **contains no chlorine**
- **with a fresh fruity scent**

750 ml | **704004** |



**WE TAKE CARE OF YOUR CLOTHES**

With passion and enthusiasm, we create products that take care of your clothes. Our specialists make sure that these products are not only effective but also pleasant to use.



## Snow White Laundry CAPSULES

### SNOW WHITE LAUNDRY CAPSULES

Extract and protect the natural whiteness of fabric, preventing it from greying. Designed for white clothes.

256 g / 10 pcs | **704002** |



## Expert Color Laundry CAPSULES

### EXPERT COLOR LAUNDRY CAPSULES

Perfectly protect colours with a concentrated wash power.

256 g / 10 pcs | **704001** |



## Sensitive Touch Laundry CAPSULES

### SENSITIVE TOUCH LAUNDRY CAPSULES

With the content of natural soap the Capsules combine maximum washing efficiency with a mild formula. Do not contain allergens, artificial colourings or optical brighteners.

256 g / 10 pcs | **704003** |

**STORE IN A CONVENIENT STORAGE BOX.  
SEE PAGE 165 FOR DETAILS.**



## Vivid Colours LAUNDRY LIQUID

### VIVID COLOURS LAUNDRY LIQUID

Perfectly protects colours and successfully removes dirt. It works even at low temperatures, prevents shrinking and stretching of the fabric.

- excellent for every colour
- with the scent of Pure Parfum 81

1000 ml | 704005 |



## White LAUNDRY LIQUID

### WHITE LAUNDRY LIQUID

The unique formula restores dazzling whiteness to fabrics. Recommended for washing even delicate clothes. A subtle aroma of wild orchid.

- revives white colour and prevents it from greying

1000 ml | 704006 |

## Black LAUNDRY LIQUID

### BLACK LAUNDRY LIQUID

Perfectly washes dark clothes and allows you to keep the intensity of black for longer. With active enzymes to effectively fight stains regardless of water temperature.

- protects black fabric from fading

1000 ml | 704007 |



# AROMATHERAPY

## Fabric Softener

### AROMATHERAPY FABRIC SOFTENER

With highly effective active microcapsules, which gradually release the fragrance and prevent static cling. The Softener leaves your clothes enjoyably soft and lastingly fragrant.

1000 ml |



**1** SWEET DELIGHT  
**704012** |

Captivating composition combining the aroma of sweet vanilla and sophisticated white lily with the scent of patchouli, almonds and sandalwood.

**2** AZURE SKY  
**704013** |

A perfect combination of citrus, fresh fruit, and green and water notes, followed by a base of musk and ambergris.



**1**

**2**

**3**

# LUXURY

## Fabric Softener

### LUXURY FABRIC SOFTENER

Highly concentrated liquids soften fabrics, have an anti-static effect and stimulate the senses. Enjoy the fabulous fluffiness and sophisticated fragrances by Federico Mahora.

1000 ml |

**1** SUNNY BREEZE PURE 23  
**704011** |

Sensual and slightly sweet composition of citrus and jasmine.

**2** ALLURING FRESHNESS PURE 18  
**704018** |

A charming combination of chypre notes with fruity-floral accords.

**3** ORIENTAL MAGIC PURE 20  
**704019** |

A seductive combination of flowers, musk and patchouli.





Anti-Mist Glass  
CLEANER

ANTI-MIST GLASS CLEANER

Perfectly clean windows and mirrors for an unbelievably long time. Thanks to silicon nanoparticles, it creates a layer that facilitates cleaning and reduces the formation of impurities.

- prevents the formation of mist, dirt and dust
- perfectly degreases and leaves no streaks

750 ml | 702013 |



Glass **CLEANER**

GLASS CLEANER

A sure way to get gleaming windows in minutes. With silicone nano-particles, it protects against new dirt. Silicone content reduces water vapour deposition.

- effective and efficient
- with the scent of green apples

750 ml | 702005 |



Glass Cleaning  
**WIPES**

GLASS CLEANING WIPES

Ensure the perfect cleaning of glass surfaces, while leaving no streaks or water spots. This product also provides a pleasant citrus scent.

- ideal for windows, mirrors and glasses
- with the addition of alcohol

60 pcs | 702001 |



Multi-Purpose  
Cleaning  
**WIPES**

MULTI-PURPOSE  
CLEANING WIPES

The unique formula with fruit vinegar enables them to effectively remove dirt, as well as grease from various types of surfaces, providing a long-lasting and fresh scent.

- perfect for plastic, glass, metal and wood
- do not leave streaks

60 pcs | 702002 |



Multi-Purpose  
**CLEANER**

MULTI-PURPOSE CLEANER

The best of the best, for small and big cleanups. Cleaner, degreaser and care product for all types of washable surfaces, including floors, walls, countertops, tiles, sanitary fittings.

- leaves a pleasant aroma of pomegranate flowers

1000 ml | 702004 |



CRT & LCD  
Screen  
**CLEANER**

CRT & LCD  
SCREEN CLEANER

Carefully removes fingerprints, dust, grease stains and dirt. Limits re-settling of dust by creating an antistatic coating. Recommended for: computer screens, mobile phones screens, plasma screens, LED and LCD screens, displays, remote controls, keyboards.

- leaves a streak-free shine
- invaluable in the home and office

250 ml | 702011 |

FROM THE ROOF  
TO CELLAR

From the roof to cellar, inside and outside – anytime and anywhere you can count on the professional help of our products. This is a real Champions League among cleaning products.





Fireplace Glass & Oven **CLEANER**

FIREPLACE GLASS & OVEN CLEANER

A special formulation that removes burn and smoke stains, even burnt grease. Excellent for cleaning barbecues and household utensils.

- **with ingredients that limit the redeposition of dirt**
- **safe for the cleaned surfaces**
- **does not leave streaks**

750 ml | **702009** |



Power **CLEANER**

POWER CLEANER

One Cleaner – various surfaces. Thanks to its special formula it cleans laminates, tiles, floor tiles, linoleum, floor tiles, terrazzo, as well as fencing and car dashboards. Perfectly removes oils and greases.

- **indispensable in the home, garage and garden**

1000 ml | **702010** |



Carpet & Upholstery **CLEANER**

CARPET & UPHOLSTERY CLEANER

The active foam formula perfectly removes stains, softens the fabric and prevents static cling. Gentle on your hands and fabric colours.

- **designed for handwashing**
- **with a citrus scent**

1000 ml | **702007** |



Laminate Floor **LIQUID**

LAMINATE FLOOR LIQUID

Perfectly clean laminate panels, free of dust or smudges. It removes grease stains and dirt. Recommended for: laminate floor panels, wall panels and veneer furniture.

- **cleans and cares for the surface**
- **leaves a pleasant smell of Marseille soap**

1000 ml | **702006** |



Plastic Surface **CLEANER**

PLASTIC SURFACE CLEANER

Removes all impurities: greasy deposits, soot and dust. Effective and gentle: does not scratch or discolour.

- **for white and colour surfaces**

750 ml | **712001** |



Cleaning **SPONGE** Wet & Wipe

CLEANING SPONGE WET & WIPE

No more dirty walls – it wipes out pen, marker and crayon marks. It may be used for cleaning garden furniture, grout, tiles, floors, doors, stoves, dishes, car rims, plastic and metal. The innovative structure of the Sponge removes dirt by penetrating deeply into the cleaned surface.

- **works without detergents – just moisten the sponge**
- **removes dirt and water stains**

10,9 x 6,1 x 3,8 cm | **702008** |



Vacuum  
FRESHENER

VACUUM FRESHENER

It emits a beautiful scent in the vacuumed room and neutralises the unpleasant smell of dust, freshening the room for a long time. It is suitable for all types of dry-operating vacuum cleaners. Easy to use – just place it near the exhaust air filter.

2 pcs (4,7 x 7,7 cm), 7,8 g, 9,8 g



- 1 ALLURING FRESHNESS  
708046 |
- 2 ORIENTAL MAGIC  
708047 |
- 3 THRILLING ADVENTURE  
708048 |

- 4 MALDIVES PARADISE  
708031 |
- 5 SINGAPORE TWILIGHT  
708034 |
- 6 GREEN SPA  
708025 |

- 7 CHARMING ALLEY  
708026 |
- 8 COSMIC FANTASY  
708057 |



Wardrobe FRAGRANCE

WARDROBE FRAGRANCE

Steeped in an original fragrance composition, gradually releases a wonderful scent. Beautiful accords fill the space ensuring the freshness of your wardrobe.

15,2 g

- 1 MALDIVES PARADISE  
708032 |
- 2 SINGAPORE TWILIGHT  
708035 |

Home PERFUME

HOME PERFUME

Beautiful fragrance compositions for your home.

40 ml

- 1 MALDIVES PARADISE  
708030 |

Light, sea accord combined with a subtle sweetness of exotic fruits bring to mind paradise holidays.

- 2 SINGAPORE TWILIGHT  
708033 |

Orange immersed in juicy, fruity-floral notes pulsates with energy like the Lion's City.

- 3 GREEN SPA  
708023 |

An energising combination of aloe vera and a green cucumber accord will have a positive and relaxing effect on you.

- 4 CHARMING ALLEY  
708024 |

A subtle duo of rose and musk scents gives the room a romantic aura.



SCENT,  
ATMOSPHERE,  
EMOTIONS

Beautiful scents improve your mood; they build atmosphere and arouse emotions. Allow them to accompany you anytime, anywhere. With our refreshing products, it is possible.





## Leather CONDITIONER

### LEATHER CONDITIONER

Makes car upholstery, furniture, clothes and leather accessories look like new again. It provides them with shine and smoothness, improves their colour and makes them waterproof.

- contains carnauba wax, honey extract and silicone emulsion with avocado oil
- intended for grain leather and eco leather

250 ml | 702014 |



## Furniture CREAM

### FURNITURE CREAM

Effectively removes dust and prevents it from accumulating. Contains carnauba wax that gives cleaned surfaces shine and minimises the risk of scratches.

- with silicone emulsion that improves furniture's moisture resistance
- suitable for wooden, laminated and veneered surfaces
- leaves a pleasant scent

250 ml | 703004 |



## Furniture Cleaning WIPES

### FURNITURE CLEANING WIPES

Effectively remove dirt and dust, as well as provide the cleaned surfaces with a dazzling shine without streaks.

- with a special formula enriched with wax
- they ensure a long-lasting fresh and pleasant scent

60 pcs | 703001 |



## THE POWER OF WAXES

Aesthetics, durability, unique atmosphere – you can maintain these features of wooden and leather objects for longer if you care for them in the right way. Our products use the power of waxes by drawing out what's best in them.



## Cockpit Matt Care SPRAY

### COCKPIT MATT CARE SPRAY

Perfectly cleans and provides an elegant, matt appearance. Gives a pleasant smell and additionally inhibits further redeposition of dust.

- **delays the process of plastic ageing**

300 ml | 711005 |







Lint-Free **CLOTH**  
For Smooth Surfaces

LINT-FREE CLOTH  
FOR SMOOTH SURFACES

It will do a great job at home as well as in workplaces that require maintaining a high level of hygiene (e.g. in the pharmaceutical, medical, electrical, automotive industries as well as in printing companies).

- **does not scratch the cleaned surface**
- **can be used with dissolvent**
- **soft and flexible material makes it easy to clean less accessible areas**

40 pcs (23 x 39 cm) | **710012** |



Ultra Absorbent Cleaning **CLOTH**

ULTRA ABSORBENT CLEANING CLOTH

Perfect for cleaning various types of surfaces in the household. Their unique structure with a system of holes facilitates the absorption of water, oily substances, detergents and paints.

- **extremely absorbent**
- **practical and economical solution – can be rinsed and reused**

34 pcs (23 x 39 cm) | **710011** |



**ATOMISER**

ATOMISER  
1 szt. | **710005** |



**DISPENSER PUMP**

DISPENSER PUMP  
1 szt. | **710004** |



**TRIGGER CAP**

TRIGGER CAP  
1 szt. | **710003.03** |



**FLIP-TOP CAP**

FLIP-TOP CAP  
1 szt. | **710003.03** |



FRAGRANCES LIST

FOR HER

PURE 01	P. 35
PURE 05	P. 41
PURE 06	P. 40
PURE 07	P. 35
PURE 09	P. 38
PURE 10	P. 34
PURE 12	P. 39
PURE 16	P. 41
PURE 17	P. 34
PURE 18	P. 41
PURE 20	P. 36
PURE 21	P. 36
PURE 23	P. 40
PURE 24	P. 38
PURE 25	P. 34
PURE 26	P. 38
PURE 32	P. 39
PURE 33	P. 40
PURE 34	P. 41
PURE 80	P. 41
PURE 81	P. 35
PURE 97	P. 36
PURE 98	P. 39
PURE 101	P. 38
PURE 132	P. 36
PURE ROYAL 141	P. 20
PURE ROYAL 142	P. 22

PURE ROYAL 146	P. 19
PURE ROYAL 147	P. 19
PURE ROYAL 162	P. 22
PURE ROYAL 171	P. 21
PURE 173	P. 38
PURE 174	P. 35
PURE 177	P. 38
PURE 180	P. 34
PURE 183	P. 36
PURE 237	P. 39
PURE 239	P. 36
PURE 241	P. 41
PURE 257	P. 38
PURE ROYAL 281	P. 18
PURE ROYAL 286	P. 21
PURE ROYAL 298	P. 20
PURE ROYAL 313	P. 16
PURE ROYAL 317	P. 19
PURE ROYAL 322	P. 18
PURE ROYAL 352	P. 19
PURE ROYAL 355	P. 19
PURE ROYAL 358	P. 22
PURE ROYAL 359	P. 22
PURE ROYAL 362	P. 22
PURE ROYAL 365	P. 20
PURE ROYAL 366	P. 22
PURE 372	P. 41

PURE 413	P. 39
PURE 414	P. 35
PURE 419	P. 40
PURE 420	P. 34
PURE 426	P. 39
PURE 427	P. 34
PURE 431	P. 38
PURE 432	P. 41
PURE 434	P. 36
PURE 436	P. 38
PURE 437	P. 34
PURE 438	P. 34
PURE 440	P. 38
PURE 441	P. 38
PURE 442	P. 38
PURE 443	P. 34
PURE 444	P. 36
PURE 445	P. 35
PURE 446	P. 36
PURE 447	P. 34
PURE 448	P. 38
PURE 449	P. 34
PURE 484	P. 41
PURE 485	P. 35
PURE 486	P. 34
PURE 487	P. 36
PURE 488	P. 35

PURE 489	P. 36
PURE 491	P. 32
PURE 492	P. 32
PURE 493	P. 32
PURE 700	P. 34
PURE 701	P. 35
PURE 702	P. 35
PURE 703	P. 41
PURE 706	P. 35
PURE ROYAL 707	P. 20
PURE ROYAL 708	P. 18
PURE ROYAL 709	P. 21
PURE ROYAL 710	P. 20
PURE ROYAL 711	P. 18
PURE ROYAL 712	P. 21
PURE ROYAL 713	P. 20
PURE ROYAL 714	P. 21
PURE ROYAL 715	P. 20
PURE 716	P. 34
PURE 717	P. 38
PURE ROYAL 777	P. 21
PURE ROYAL 800	P. 18
PURE ROYAL 801	P. 21
PURE ROYAL 802	P. 22
PURE ROYAL 803	P. 22
PURE ROYAL 804	P. 22
PURE ROYAL 806	P. 18

PURE ROYAL 807	P. 18
PURE ROYAL 809	P. 21
PURE ROYAL 810	P. 20
PURE ROYAL 811	P. 22
PURE ROYAL 817	P. 18
PURE ROYAL 818	P. 18
PURE ROYAL 819	P. 23
PURE ROYAL 820	P. 21
PURE ROYAL 825	P. 22
PURE ROYAL 826	P. 18
PURE ROYAL 827	P. 18
PURE ROYAL 828	P. 21
PURE ROYAL 829	P. 22
PURE ROYAL 833	P. 18
PURE ROYAL 834	P. 21
PURE ROYAL 835	P. 18
PURE ROYAL 836	P. 18
PURE ROYAL 841	P. 17
PURE ROYAL 842	P. 17
PURE ROYAL 843	P. 17
PURE ROYAL 844	P. 17
PURE ROYAL 845	P. 17
PURE ROYAL 846	P. 17
PURE ROYAL 847	P. 17
PURE ROYAL 848	P. 17

FOR HIM

PURE 43	P. 47
PURE 52	P. 44
PURE 54	P. 47
PURE 55	P. 46
PURE 56	P. 46
PURE 57	P. 45
PURE 64	P. 44
PURE 93	P. 45
PURE 110	P. 46
PURE 134	P. 45
PURE 135	P. 47
PURE ROYAL 151	P. 29
PURE ROYAL 152	P. 29
PURE ROYAL 160	P. 28

PURE ROYAL 169	P. 26
PURE ROYAL 195	P. 28
PURE ROYAL 198	P. 28
PURE ROYAL 199	P. 26
PURE 224	P. 44
PURE ROYAL 300	P. 29
PURE ROYAL 301	P. 26
PURE ROYAL 326	P. 26
PURE ROYAL 327	P. 29
PURE ROYAL 332	P. 29
PURE ROYAL 334	P. 29
PURE ROYAL 335	P. 26
PURE 452	P. 45
PURE 457	P. 46

PURE 465	P. 44
PURE 466	P. 44
PURE 471	P. 44
PURE 472	P. 46
PURE 473	P. 47
PURE 474	P. 46
PURE 475	P. 44
PURE 478	P. 44
PURE 479	P. 46
PURE 480	P. 47
PURE 481	P. 44
PURE 482	P. 44
PURE 483	P. 47
PURE 490	P. 46

PURE 494	P. 43
PURE 495	P. 43
PURE 497	P. 43
PURE 498	P. 43
PURE 704	P. 46
PURE 705	P. 46
PURE 718	P. 45
PURE 719	P. 44
PURE 720	P. 46
PURE 721	P. 45
PURE ROYAL 812	P. 26
PURE ROYAL 813	P. 26
PURE ROYAL 814	P. 29
PURE ROYAL 815	P. 26

PURE ROYAL 821	P. 26
PURE ROYAL 822	P. 26
PURE ROYAL 823	P. 27
PURE ROYAL 824	P. 28
PURE ROYAL 830	P. 26
PURE ROYAL 831	P. 29
PURE ROYAL 832	P. 26
PURE ROYAL 837	P. 27
PURE ROYAL 838	P. 29
PURE ROYAL 839	P. 27
PURE ROYAL 840	P. 29
PURE ROYAL 849	P. 24

UNISEX

PURE ROYAL 500	P. 9
PURE ROYAL 900	P. 14
PURE ROYAL 901	P. 14
PURE ROYAL 902	P. 12
PURE ROYAL 903	P. 12
PURE ROYAL 904	P. 13
PURE ROYAL 905	P. 13
PURE ROYAL 906	P. 13
PURE ROYAL 907	P. 14
PURE ROYAL 908	P. 12
PURE ROYAL 909	P. 12
PURE ROYAL 910	P. 14

PURE ROYAL 911	P. 12
PURE ROYAL 912	P. 14
PURE ROYAL 913	P. 13
PURE ROYAL 914	P. 12
PURE ROYAL 915	P. 12
PURE ROYAL 916	P. 14
PURE ROYAL 917	P. 12
PURE ROYAL 918	P. 12
PURE ROYAL 919	P. 15
PURE ROYAL 920	P. 13
PURE ROYAL 921	P. 12
PURE ROYAL 922	P. 12

PURE ROYAL 923	P. 13
PURE ROYAL 924	P. 14
PURE ROYAL 925	P. 13
PURE ROYAL 926	P. 13
PURE ROYAL 927	P. 13
PURE ROYAL 928	P. 15
PURE ROYAL 929	P. 12
PURE ROYAL 930	P. 13
PURE ROYAL 931	P. 14
PURE ROYAL 932	P. 14
PURE ROYAL 933	P. 10
PURE ROYAL 934	P. 10

PURE ROYAL 970	P. 10
PURE ROYAL 971	P. 10
PURE ROYAL 972	P. 11
PURE ROYAL 973	P. 10
PURE ROYAL 974	P. 11
PURE ROYAL 975	P. 10
PURE ROYAL 976	P. 10
PURE ROYAL 977	P. 10
PURE ROYAL 979	P. 10

UTIQUE

Ambergris	P. 7
Ambre Royal	P. 12
Black	P. 15
Bubble	P. 9
Flamingo	P. 8
Gold	P. 14
Muffin	P. 10
Ruby	P. 16
Sexy Cashmere	P. 11
Violet Oud	P. 13

FOR HER

FRAGRANCE FAMILY	KEY NOTE	FRAGRANCES	PEROMONE	INTENSE	SHOWER GEL	BODY BALM	SOAP BAR	BODY SALT SCRUB	ANTIPERSPIRANT ROLL-ON	BODY SPRAY	BODY MIST	SHAVING FOAM
FLORAL	WITH A FRUITY NOTE	10, 17, 25, 180, 281, 322, 420, 427, 437, 438, 443, 447, 449, 486, <b>493</b> , 700, 708, 711, 716, 800, 806, 807, 817, 818, 827, 833, 835, 836, <b>841</b> , <b>845</b> , <b>847</b> , 929, FLAMINGO	10	10, 17, 25	FLAMINGO	FLAMINGO						
	WITH AN ORIENTAL NOTE	20, 97, 132, 147, 146, 183, 239, 434, 448, 317, 352, 444, 355, 909, 487, 489, 915, 922, <b>979</b>	20, 489	20, 97, 489	20	20			20		20, 489	
	WITH A WATER NOTE	7, 141, 174, 701, 707, 488										
	WITH A GREEN NOTE	1, 81	1, 81	81	81	81			81			
	WITH AN ALDEHYDE NOTE	21, 826		21								
	WITH A CITRUS NOTE	298, <b>491</b> , 702, 810, 921										
	WITH A WOODY NOTE	365, 414, 445, 777, 715, 710, 713, 918										
	WITH A CHYPRE NOTE	485, 706, <b>848</b> , 908, <b>970</b> , <b>971</b> , <b>976</b>										
	WITH A GOURMAND NOTE	<b>842</b> , <b>846</b> , <b>934</b> , <b>975</b>										
	WITH A LEMON NOTE	33, 828, 712	33	33	33	33			33			
CITRUS	WITH A FRUITY NOTE	419, 903										
	WITH A MANDARIN NOTE	23, 801	23	23								
	WITH AN ORANGE NOTE	6, 917										
	WITH A CHYPRE NOTE	902										
	WITH A LIME NOTE	911										
	WITH A FLORAL NOTE	709, 714, <b>844</b> , 914										
	WITH AN ORIENTAL NOTE	484										
	WITH A FLORAL NOTE	9, 101, 171, 257, 431, 438, 440, 441, 442, 717, 809, 820, 834, 913, 920, MUFFIN, VIOLET OUD	101, 431, 436	9, 436	171, 809, MUFFIN, VIOLET OUD	809						
	WITH A FRUITY NOTE	12, 98, 237, 286, 413, 426, <b>492</b> , <b>972</b> , AMBRE ROYAL, BUBBLE	98, 413	98, 413		BUBBLE						
	WITH A WOODY NOTE	26, 142, 162, 359, 448, 904, 905, <b>974</b> , BLACK, GOLD, RUBY			BLACK, GOLD, RUBY							
ORIENTAL	WITH A SPICY NOTE	24, 173, 177, 366, 906		173	173, 366	173, 366			173	366		
	WITH AN AMBERGRIS NOTE	32, AMBERGRIS										
	WITH A GOURMAND NOTE	923, 930										
	WITH A CHYPRE NOTE	925, 926										
	WITH A FOUGERE NOTE	927										
	WITH A FLORAL NOTE	241, 313, 825, 924										
	WITH A FRUITY NOTE	358, 900, <b>977</b>					<b>900</b>	<b>900</b>		900		
	WITH AN ORIENTAL NOTE	703, 932, SEXY CASHMERE										
	WITH A CITRUS NOTE	500, <b>843</b> , 907										
	WITH A GOURMAND NOTE	910								910		
WOODY	WITH A FOUGERE NOTE	931										
	WITH A FRUITY NOTE	5, 16, 34, 80, 362, 372, 804, 811, 829, 916	5, 34	5, 16								
	WITH A WOODY NOTE	18	18	18	18	18	18			18	18	
CHYPRE	WITH A FLORAL NOTE	432, 802, 803, 819, 912										
	WITH A SPICY NOTE	901										
	WITH A LAVENDER NOTE	919, <b>933</b>										
FOUGERE	WITH A GREEN NOTE	928										
	WITH A CHYPRE NOTE	<b>973</b>										



FOR HIM

FRAGRANCE FAMILY	KEY NOTE	FRAGRANCES	PEROMONE	INTENSE	SHOWER GEL	BODY BALM	SOAP BAR	BODY SALT SCRUB	BODY SPRAY	ANTIPERSPIRANT ROLL-ON	SHAVING FOAM	AFTER-SHAVE	AFTER-SHAVE BALM
FLORAL	WITH A FRUITY NOTE	929, FLAMINGO			FLAMINGO	FLAMINGO							
	WITH A CHYPRE NOTE	908, <b>970, 971, 976</b>											
	WITH AN ORIENTAL NOTE	909, 915, 922, <b>979</b>											
	WITH A WOODY NOTE	918											
	WITH A CITRUS NOTE	921											
	WITH A GOURMAND NOTE	<b>934, 975</b>											
CHYPRE	WITH A FRUITY NOTE	169, <b>498</b> , 916											
	WITH A WOODY NOTE	56	56	56									
	WITH AMBERGRIS AND MUSK NOTES	110	110	110									
	WITH A SPICY NOTE	901											
	WITH A FLORAL NOTE	912											
	WITH A WATER NOTE	704, 705											
ORIENTAL	WITH AN ORIENTAL NOTE	490											
	WITH A FLORAL NOTE	52, 465, 481, 913, 920, MUFFIN, VIOLET OUD	52	52	52, MUFFIN, VIOLET OUD				913	52		52	52
	WITH A FRUITY NOTE	478, 482, 813, 830, <b>972</b> AMBRE ROYAL, BUBBLE				BUBBLE							
	WITH A SPICY NOTE	199, 224, 466, 917, 815, 832, 906			199, 815				199	199		199	199
	WITH AN AMBERGRIS NOTE	64, 823, AMBERGRIS	64	64	823								
	WITH A WOODY NOTE	301, 326, 335, 471, 475, 812, 821, 822, 837, 904, 905, <b>974</b> , BLACK, GOLD, RUBY				BLACK, GOLD, RUBY							
	WITH A GOURMAND NOTE	839, 923, 930											
	WITH A CHYPRE NOTE	925, 926											
	WITH A FOUGERE NOTE	<b>494, 496</b> , 927											
	WITH A CITRUS NOTE	<b>495</b>											
WOODY	WITH A FRUITY NOTE	55, 195, 427, 479, 824, 900, <b>977</b>	472	472	472		<b>900</b>	<b>900</b>	900	472			
	WITH A PATCHOULI NOTE	160, 198, 327, 334											
	WITH A VETIVER NOTE	151, 152											
	WITH A WATER NOTE	457, 474	457	457									
	WITH AN ORIENTAL NOTE	932, SEXY CASHMERE											
	WITH A CITRUS NOTE	<b>497</b> , 500, 907											
	WITH A GOURMAND NOTE	720, 910							910				
	WITH A CHYPRE NOTE	838											
	WITH A FLORAL NOTE	924											
	WITH A FOUGERE NOTE	931											
FOUGERE	WITH A FERN NOTE	43, 135, 332	135	43									
	WITH A LAVENDER NOTE	54, 300, 473, 480, 483, 814, 831, <b>849</b> , 919, <b>933</b>	473	473	473					473			
	WITH A GREEN NOTE	928											
	WITH A CHYPRE NOTE	<b>973</b>											
CITRUS	WITH A LEMON NOTE	57											
	WITH A MANDARIN NOTE	134, 452	134	134	134				134	134	134	134	
	WITH AN ORANGE NOTE	93, 917											
	WITH A CHYPRE NOTE	902											
	WITH A FRUITY NOTE	903											
	WITH A LIME NOTE	911											
	WITH A FLORAL NOTE	914											
	WITH AN ORIENTAL NOTE	721, 840											
	WITH A WOODY NOTE	718											

FOR HOME

FRAGRANCE FAMILY	KEY NOTE	FRAGRANCES	SCENTED CANDLE	AIR FRESHENER	IRONING LIQUID	WARDROBE FRAGRANCE	VIVID COLOURS LAUNDRY LIQUID	FABRIC SOFTENER			VACUUM FRESHENER			
								Sunny Breeze	Alluring Freshness	Oriental Magic	Alluring Freshness	Oriental Magic	Thrilling Adventure	Cosmic Fantasy
CHYPRE	WITH A WOODY NOTE	18, 56	18	18		18		18			18			
	WITH A FRUITY NOTE	05, 372												
CITRUS	WITH A MANDARIN NOTE	134			23	23		23						
	WITH A LEMON NOTE					33								
FLORAL	WITH A FRUITY NOTE		FLAMINGO		10									
	WITH AN ORIENTAL NOTE	20, 489	20	20, 489		20, 489				20		20		489
	WITH AN ALDEHYDE NOTE	21												
	WITH A GREEN NOTE	81			81		81							
WOODY	WITH A FRUITY NOTE	472, 900	472, 900	472, 900		472							472	
	WITH A GOURMAND NOTE	910												
ORIENTAL	WITH A FLORAL NOTE	436, 809, 52	809, VIOLET OUD	809		436, 809								
	WITH A FRUITY NOTE	32, 413	413			413								
	WITH A SPICY NOTE	366				366								
	WITH AN AMBERGRIS NOTE			823		823								
FOUGERE	WITH A WOODY NOTE	335	BLACK			335								
	WITH A LAVENDER NOTE	473				473								



All prices in the Catalogue include VAT. FM WORLD product Catalogue no. 34 is valid from 29th March 2021. The offer included in the Catalogue in terms of prices and products is valid from 29th March 2021 while stock lasts or until a new Catalogue is introduced. Detailed information about the products and usage methods can be found on distribution.fmworld.com. Catalogues, the Marketing Plan and other advertising, promotional, and information materials that are issued or explicitly approved by FM WORLD are the only authorised sources of information for the purpose of selling and advertising of FM WORLD. The FM WORLD branded products are genuine products by FM WORLD.

© FM World Spółka z ograniczoną odpowiedzialnością, address: ul. Żmigrodzka 247, 51-129 Wrocław, registered in the National Court Register, District Court Wrocław–Fabryczna in Wrocław, 6th Economic Department of National Court Register, under no. NCR (KRS) 0000411446, NIP: 8952010760, with a fully paid-up share capital in the amount of PLN 182 900,00, 2021.